


Anti-PICALM antibody [EPR12177] ab172962

KO 評価済 リコンビナント RabMAb

★★★★★ [6 Abreviews](#) [5 References](#) [画像数 7](#)

製品の概要

製品名	Anti-PICALM antibody [EPR12177]
製品の詳細	Rabbit monoclonal [EPR12177] to PICALM
由来種	Rabbit
アプリケーション	適用あり: WB, IHC-P, ICC/IF 適用なし: Flow Cyt or IP
種交差性	交差種: Human 交差が予測される動物種: Mouse 
免疫原	Synthetic peptide within Human PICALM aa 550-650. The exact sequence is proprietary. Database link: Q13492
ポジティブ・コントロール	WB: U-2 OS, PC-3, Caco-2, HepG2, HeLa, and A431 cell lysates and human fetal brain tissue lysates. IHC-P: Human placenta and breast tissues. ICC/IF: HeLa cells.
特記事項	<p>This product is a recombinant monoclonal antibody, which offers several advantages including:</p> <ul style="list-style-type: none">- High batch-to-batch consistency and reproducibility- Improved sensitivity and specificity- Long-term security of supply- Animal-free production <p>For more information see here.</p> <p>Our RabMAb[®] technology is a patented hybridoma-based technology for making rabbit monoclonal antibodies. For details on our patents, please refer to RabMAb[®] patents.</p> <p>Rat: We have preliminary internal testing data to indicate this antibody may not react with this species. Please contact us for more information.</p>

製品の特性

製品の状態	Liquid
保存方法	Shipped at 4°C. Store at +4°C short term (1-2 weeks). Upon delivery aliquot. Store at -20°C long term. Avoid freeze / thaw cycle.
バッファー	pH: 7.20 Preservative: 0.01% Sodium azide Constituents: 9% PBS, 40% Glycerol (glycerin, glycerine), 0.05% BSA, 50% Tissue culture

	supernatant
精製度	Protein A purified
ポリクローナル	モノクローナル
クローン名	EPR12177
アイソタイプ	IgG

アプリケーション

The Abpromise guarantee Abpromise保証は、次のテスト済みアプリケーションにおけるab172962の使用に適用されず
アプリケーションノートには、推奨の開始希釈率がありますが、適切な希釈率につきましてはご検討ください。

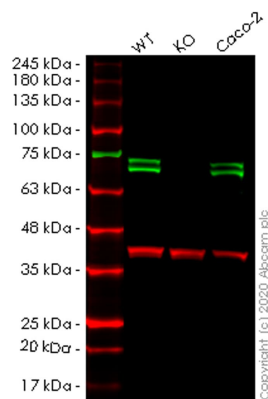
アプリケーション	Abreviews	特記事項
WB	★★★★★ (4)	1/1000 - 1/5000. Detects a band of approximately 66-71 kDa (predicted molecular weight: 71 kDa).
IHC-P		1/50 - 1/100. Perform heat mediated antigen retrieval before commencing with IHC staining protocol.
ICC/IF		1/100 - 1/250.

追加情報 Is unsuitable for Flow Cyt or IP.

ターゲット情報

機能	Assembly protein recruiting clathrin and adaptor protein complex 2 (AP2) to cell membranes at sites of coated-pit formation and clathrin-vesicle assembly. May be required to determine the amount of membrane to be recycled, possibly by regulating the size of the clathrin cage. Involved in AP2-dependent clathrin-mediated endocytosis at the neuromuscular junction.
組織特異性	Expressed in all tissues examined.
関連疾患	Note=A chromosomal aberration involving PICALM is found in diffuse histiocytic lymphomas. Translocation t(10;11)(p13;q14) with MLLT10.
配列類似性	Contains 1 ENTH (epsin N-terminal homology) domain.
細胞内局在	Membrane > clathrin-coated pit. Golgi apparatus. Cytoplasmic vesicle > clathrin-coated vesicle. Colocalized with clathrin in the Golgi area.

画像



Western blot - Anti-PICALM antibody [EPR12177] (ab172962)

All lanes : Anti-PICALM antibody [EPR12177] (ab172962) at 1/1000 dilution

Lane 1 : Wild-type HeLa cell lysate

Lane 2 : PICALM knockout HeLa cell lysate

Lane 3 : Caco-2 cell lysate

Lysates/proteins at 20 µg per lane.

Secondary

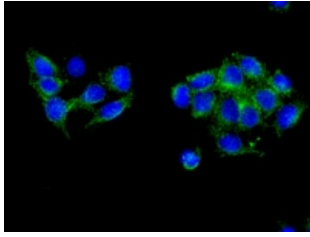
All lanes : Goat anti-Rabbit IgG H&L (IRDye® 800CW) preadsorbed ([ab216773](#)) at 1/10000 dilution

Predicted band size: 71 kDa

Observed band size: 70-75 kDa

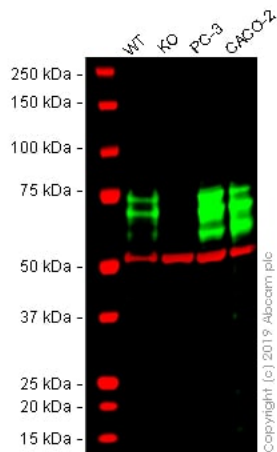
Lanes 1-3: Merged signal (red and green). Green - ab172962 observed at 70-75 kDa. Red - loading control [ab8245](#) observed at 36 kDa.

ab172962 Anti-PICALM antibody [EPR12177] was shown to specifically react with PICALM in wild-type HeLa cells. Loss of signal was observed when knockout cell line [ab265653](#) (knockout cell lysate [ab258113](#)) was used. Wild-type and PICALM knockout samples were subjected to SDS-PAGE. ab172962 and Anti-GAPDH antibody [6C5] - Loading Control ([ab8245](#)) were incubated overnight at 4°C at 1 in 1000 dilution and 1 in 20000 dilution respectively. Blots were developed with Goat anti-Rabbit IgG H&L (IRDye® 800CW) preadsorbed ([ab216773](#)) and Goat anti-Mouse IgG H&L (IRDye® 680RD) preadsorbed ([ab216776](#)) secondary antibodies at 1 in 20000 dilution for 1 hour at room temperature before imaging.



Immunocytochemistry/ Immunofluorescence - Anti-PICALM antibody [EPR12177] (ab172962)

Immunofluorescent analysis of HeLa cells labeling PICALM with ab172962 at 1/100 dilution.



Western blot - Anti-PICALM antibody [EPR12177] (ab172962)

All lanes : Anti-PICALM antibody [EPR12177] (ab172962) at 1/5000 dilution

Lane 1 : Wild-type U-2 OS whole cell lysate

Lane 2 : PICALM knockout U-2 OS whole cell lysate

Lane 3 : PC3 (Human prostate adenocarcinoma cell line) whole cell lysate

Lane 4 : Caco-2 (Human colorectal adenocarcinoma cell line) whole cell lysate

Lysates/proteins at 20 µg per lane.

Performed under reducing conditions.

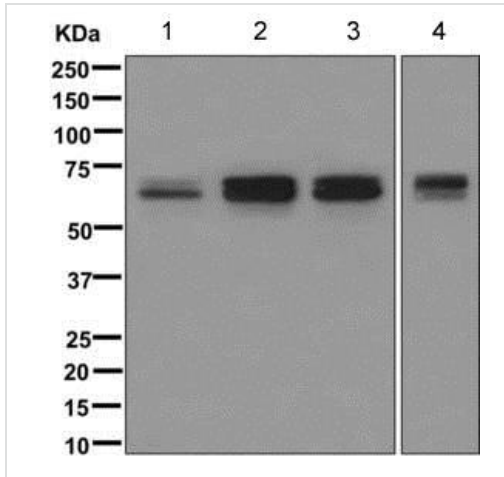
Predicted band size: 71 kDa

Observed band size: 70-75 kDa

Lanes 1 - 4: Merged signal (red and green). Green - ab172962 observed at 70-75 kDa. Red - loading control, **ab7291** (Mouse anti-Alpha Tubulin [DM1A]) observed at 55kDa.

ab172962 was shown to react with PICALM in U-2 OS wild-type cells in Western blot. Loss of signal was observed when PICALM knockout sample was used. U-2 OS wild-type and PICALM knockout cell lysates were subjected to SDS-PAGE. Membranes were blocked in 3% Milk in TBS-T (0.1% Tween®) before incubation with ab172962 and **ab7291** (Mouse anti-Alpha Tubulin [DM1A]) overnight at 4°C at a 1 in 5000 dilution and a 1 in 20000 dilution respectively. Blots were developed with Goat anti-Rabbit IgG H&L (IRDye® 800CW) preabsorbed (**ab216773**) and Goat anti-Mouse IgG H&L (IRDye® 680RD) preabsorbed (**ab216776**) secondary antibodies at 1 in 20000 dilution for 1 hour at room

temperature before imaging.



Western blot - Anti-PICALM antibody [EPR12177] (ab172962)

All lanes : Anti-PICALM antibody [EPR12177] (ab172962) at 1/1000 dilution

Lane 1 : HepG2 lysate

Lane 2 : HeLa lysate

Lane 3 : A431 lysate

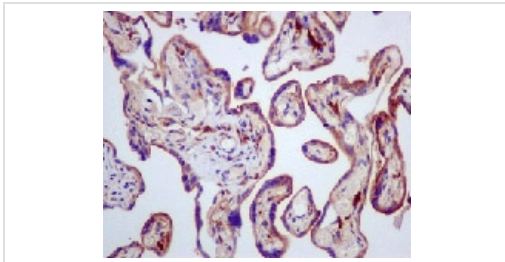
Lane 4 : Human fetal brain lysate

Lysates/proteins at 10 µg per lane.

Secondary

All lanes : Goat anti-rabbit HRP at 1/2000 dilution

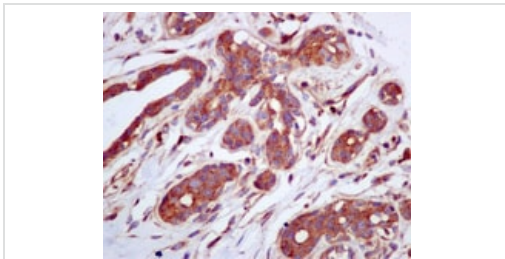
Predicted band size: 71 kDa



Immunohistochemistry (Formalin/PFA-fixed paraffin-embedded sections) - Anti-PICALM antibody [EPR12177] (ab172962)

Immunohistochemical analysis of paraffin-embedded Human Placenta tissue labeling PICALM with ab172962 at 1/50 dilution.

Perform heat mediated antigen retrieval before commencing with IHC staining protocol.







Immunohistochemistry (Formalin/PFA-fixed paraffin-embedded sections) - Anti-PICALM antibody [EPR12177] (ab172962)

Immunohistochemical analysis of paraffin-embedded Human Breast tissue labeling PICALM with ab172962 at 1/50 dilution.

Perform heat mediated antigen retrieval before commencing with IHC staining protocol.

Why choose a recombinant antibody?

 <p>Research with confidence Consistent and reproducible results</p>	 <p>Long-term and scalable supply Recombinant technology</p>
 <p>Success from the first experiment Confirmed specificity</p>	 <p>Ethical standards compliant Animal-free production</p>

Anti-PICALM antibody [EPR12177] (ab172962)

Please note: All products are "FOR RESEARCH USE ONLY. NOT FOR USE IN DIAGNOSTIC PROCEDURES"

Our Abpromise to you: Quality guaranteed and expert technical support

- Replacement or refund for products not performing as stated on the datasheet
- Valid for 12 months from date of delivery
- Response to your inquiry within 24 hours
- We provide support in Chinese, English, French, German, Japanese and Spanish
- Extensive multi-media technical resources to help you
- We investigate all quality concerns to ensure our products perform to the highest standards

If the product does not perform as described on this datasheet, we will offer a refund or replacement. For full details of the Abpromise, please visit <https://www.abcam.co.jp/abpromise> or contact our technical team.

Terms and conditions

- Guarantee only valid for products bought direct from Abcam or one of our authorized distributors