




Anti-Phospholamban (phospho S16) antibody ab15000

★★★★★ [11 Abreviews](#) [33 References](#) [画像数 1](#)

製品の概要

製品名	Anti-Phospholamban (phospho S16) antibody
製品の詳細	Rabbit polyclonal to Phospholamban (phospho S16)
由来種	Rabbit
特異性	Multiple bands can be observed in addition to the 25kD pentamer for PLB. Monomeric, dimeric, trimeric forms, etc. can be observed if the preparations are boiled before SDS-PAGE. This antibody also can display non-specific bands at 75 and 100kD in some lysate preparations. Note: Do not boil cardiac preparation. Boiling may reduce the 25kD pentamer in to tri-, di- or monomers. In addition, phosphorylation may disrupt the pentamer into dimers and monomers.
アプリケーション	適用あり: IHC-Fr, IHC-P, WB
種交差性	交差種: Mouse, Rat, Rabbit, Hamster, Cow, Human, Pig, Chinese hamster 交差が予測される動物種: Dog 
免疫原	Synthetic peptide corresponding to Human Phospholamban aa 1-100 (phospho S16) conjugated to keyhole limpet haemocyanin. Run BLAST with  Run BLAST with 
特記事項	<p>The Life Science industry has been in the grips of a reproducibility crisis for a number of years. Abcam is leading the way in addressing this with our range of recombinant monoclonal antibodies and knockout edited cell lines for gold-standard validation. Please check that this product meets your needs before purchasing.</p> <p>If you have any questions, special requirements or concerns, please send us an inquiry and/or contact our Support team ahead of purchase. Recommended alternatives for this product can be found below, along with publications, customer reviews and Q&As</p>

製品の特性

製品の状態	Liquid
保存方法	Shipped at 4°C. Upon delivery aliquot and store at -20°C. Avoid freeze / thaw cycles.
バッファー	Preservative: 0.05% Sodium azide Constituents: 0.368% Tris glycine, 30% Glycerol, 0.87% Sodium chloride
精製度	Immunogen affinity purified
ポリ/モノ	ポリクローナル
アイソタイプ	IgG

アプリケーション

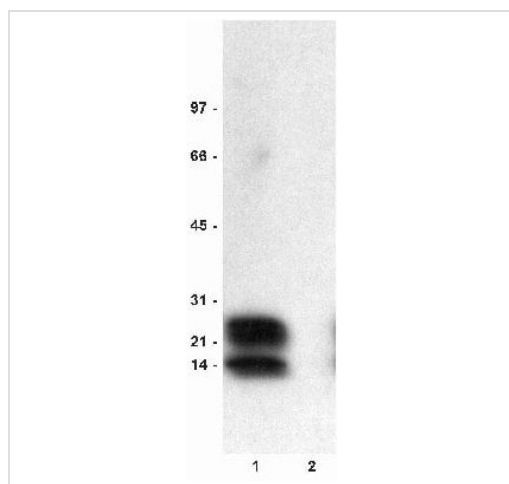
The Abpromise guarantee **Abpromise保証は、次のテスト済みアプリケーションにおけるab15000の使用に適用されます**
アプリケーションノートには、推奨の開始希釈率がありますが、適切な希釈率につきましてはご確認ください。

アプリケーション	Abreviews	特記事項
IHC-Fr	★★★★★ (1)	Use at an assay dependent concentration.
IHC-P	★★★★★ (1)	Use at an assay dependent concentration.
WB	★★★★★ (8)	Use a concentration of 0.5 - 2 µg/ml. Predicted molecular weight: 6.24 kDa.

ターゲット情報

機能	Reversibly inhibits the activity of ATP2A2 in cardiac sarcoplasmic reticulum by decreasing the apparent affinity of the ATPase for Ca(2+). Modulates the contractility of the heart muscle in response to physiological stimuli via its effects on ATP2A2. Modulates calcium re-uptake during muscle relaxation and plays an important role in calcium homeostasis in the heart muscle. The degree of ATP2A2 inhibition depends on the oligomeric state of PLN. ATP2A2 inhibition is alleviated by PLN phosphorylation.
組織特異性	Heart muscle (at protein level).
関連疾患	Cardiomyopathy, dilated 1P Cardiomyopathy, familial hypertrophic 18
配列類似性	Belongs to the phospholamban family.
翻訳後修飾	Phosphorylation by PKA abolishes the inhibition of ATP2A2-mediated calcium uptake. Phosphorylated at Thr-17 by CaMK2, and in response to beta-adrenergic stimulation. Phosphorylation by DMPK may stimulate sarcoplasmic reticulum calcium uptake in cardiomyocytes.
細胞内局在	Endoplasmic reticulum membrane. Sarcoplasmic reticulum membrane. Mitochondrion membrane. Membrane. Colocalizes with HAX1 at the endoplasmic reticulum (PubMed:17241641). Colocalizes with DMPK a the sarcoplasmic reticulum (PubMed:15598648).

画像



Western blot - Anti-Phospholamban (phospho S16) antibody (ab15000)

All lanes : Anti-Phospholamban (phospho S16) antibody (ab15000) at 0.5 µg/ml

Lane 1 : Bovine cardiac preparation treated with PKA

Lane 2 : Untreated bovine cardiac preparation

Predicted band size: 6.24 kDa

Additional bands at: 14 kDa (possible multimer), 23 kDa (possible multimer)

Please note: All products are "FOR RESEARCH USE ONLY. NOT FOR USE IN DIAGNOSTIC PROCEDURES"

Our Abpromise to you: Quality guaranteed and expert technical support

- Replacement or refund for products not performing as stated on the datasheet
- Valid for 12 months from date of delivery
- Response to your inquiry within 24 hours
- We provide support in Chinese, English, French, German, Japanese and Spanish
- Extensive multi-media technical resources to help you
- We investigate all quality concerns to ensure our products perform to the highest standards

If the product does not perform as described on this datasheet, we will offer a refund or replacement. For full details of the Abpromise, please visit <https://www.abcam.co.jp/abpromise> or contact our technical team.

Terms and conditions

- Guarantee only valid for products bought direct from Abcam or one of our authorized distributors