

Anti-PHLDA1 antibody [EPR6674] ab133654

リコンビナント RabMAb[®]

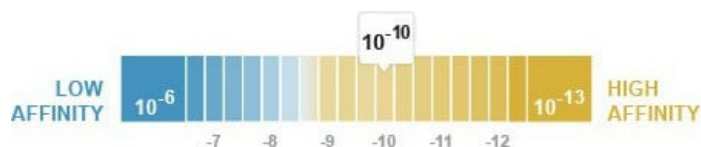
7 References 画像数 5

製品の概要

製品名	Anti-PHLDA1 antibody [EPR6674]
製品の詳細	Rabbit monoclonal [EPR6674] to PHLDA1
由来種	Rabbit
アプリケーション	適用あり: WB, IHC-P, ICC/IF 適用なし: Flow Cyt or IP
種交差性	交差種: Human
免疫原	Synthetic peptide. This information is proprietary to Abcam and/or its suppliers.
ポジティブ・コントロール	Human melanoma tissue lysate; A375 and BxPC3 cell lysates; Human colon carcinoma tissue; BxPC3 cells
特記事項	<p>This product is a recombinant monoclonal antibody, which offers several advantages including:</p> <ul style="list-style-type: none"> - High batch-to-batch consistency and reproducibility - Improved sensitivity and specificity - Long-term security of supply - Animal-free production <p>For more information see here.</p> <p>Our RabMAb[®] technology is a patented hybridoma-based technology for making rabbit monoclonal antibodies. For details on our patents, please refer to RabMAb[®] patents.</p> <p>Mouse, Rat: We have preliminary internal testing data to indicate this antibody may not react with these species. Please contact us for more information.</p>

製品の特性

製品の状態	Liquid
保存方法	Shipped at 4°C. Store at -20°C. Stable for 12 months at -20°C.
解離定数 (K _D 値)	K _D = 3.35 x 10 ⁻¹⁰ M



Learn more about K_D

バッファー	pH: 7.20 Preservative: 0.01% Sodium azide Constituents: 9% PBS, 40% Glycerol (glycerin, glycerine), 0.05% BSA, 50% Tissue culture supernatant
精製度	Protein A purified
ポリ/モノ	モノクローナル
クローン名	EPR6674
アイソタイプ	IgG

アプリケーション

The Abpromise guarantee **Abpromise保証は、次のテスト済みアプリケーションにおけるab133654の使用に適用されます**
アプリケーションノートには、推奨の開始希釈率がありますが、適切な希釈率につきましてはご検討ください。

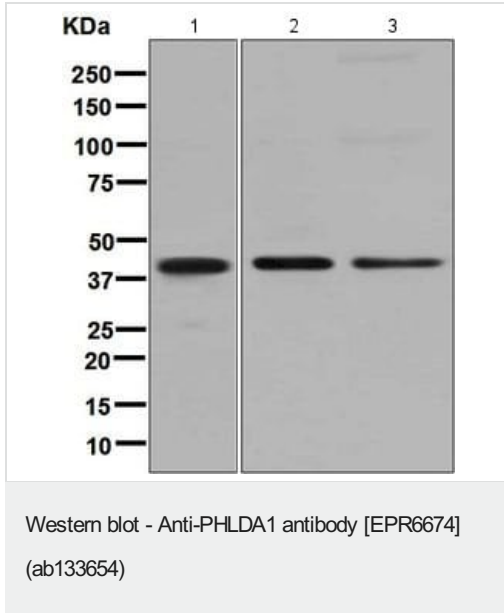
アプリケーション	Abreviews	特記事項
WB		1/10000 - 1/50000. Predicted molecular weight: 45 kDa.
IHC-P		1/50 - 1/100. Perform heat mediated antigen retrieval before commencing with IHC staining protocol.
ICC/IF		1/100 - 1/250.

追加情報 Is unsuitable for Flow Cyt or IP.

ターゲット情報

機能	Seems to be involved in regulation of apoptosis. May be involved in detachment-mediated programmed cell death. May mediate apoptosis during neuronal development. May be involved in regulation of anti-apoptotic effects of IGF1. May be involved in translational regulation.
組織特異性	Widely expressed with highest levels in pancreas. Strongly expressed by benign melanocytic nevi, and progressively reduced expressed in primary and metastatic melanomas (at protein level).
配列類似性	Contains 1 PH domain.
細胞内局在	Cytoplasm. Cytoplasmic vesicle. Nucleus, nucleolus. Colocalizes with intracellular vesicles.

画像



All lanes : Anti-PHLDA1 antibody [EPR6674] (ab133654) at 1/10000 dilution

Lane 1 : Human melanoma tissue lysate

Lane 2 : A375 cell lysate

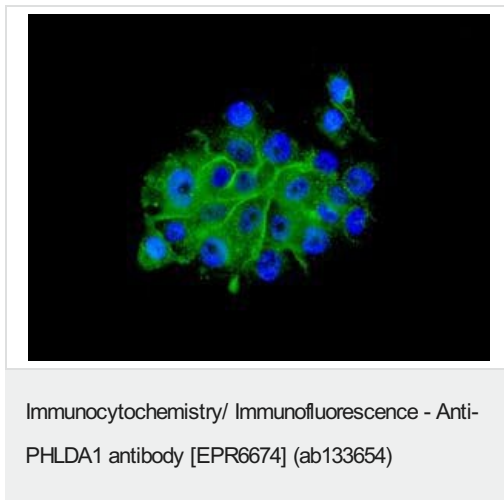
Lane 3 : BxPC3 cell lysate

Lysates/proteins at 10 µg per lane.

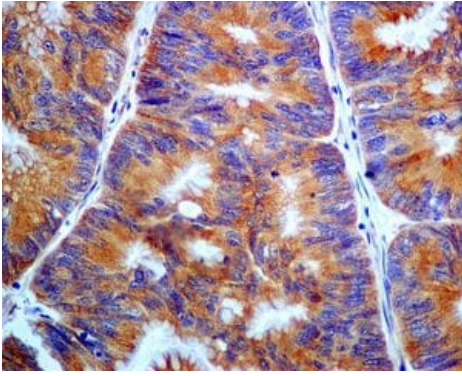
Secondary

All lanes : Goat anti-Rabbit HRP at 1/2000 dilution

Predicted band size: 45 kDa



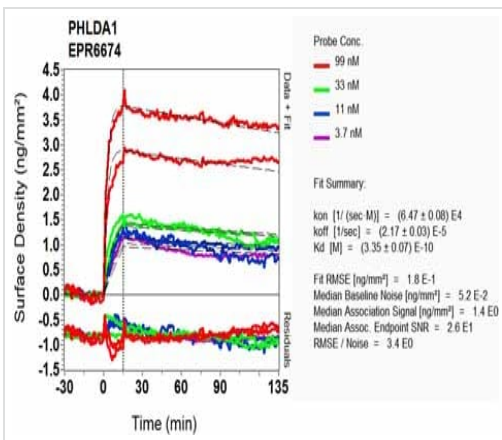
Immunocytochemical analysis of PHLDA1 in BxPC3 cells labelled with ab133654 at a 1/100 dilution.



Immunohistochemistry (Formalin/PFA-fixed paraffin-embedded sections) - Anti-PHLDA1 antibody [EPR6674] (ab133654)

Immunohistochemical analysis of PHLDA1 in paraffin embedded Human colon carcinoma tissue labelled with ab133654 at a 1/50 dilution.

Perform heat mediated antigen retrieval before commencing with IHC staining protocol.



SPR Scanning - Anti-PHLDA1 antibody [EPR6674] (ab133654)

Equilibrium dissociation constant (K_D)

Learn more about K_D

[Click here to learn more about \$K_D\$](#)

Why choose a recombinant antibody?

- Research with confidence**
Consistent and reproducible results
- Long-term and scalable supply**
Recombinant technology
- Success from the first experiment**
Confirmed specificity
- Ethical standards compliant**
Animal-free production

Anti-PHLDA1 antibody [EPR6674] (ab133654)

Please note: All products are "FOR RESEARCH USE ONLY. NOT FOR USE IN DIAGNOSTIC PROCEDURES"

Our Abpromise to you: Quality guaranteed and expert technical support

- Replacement or refund for products not performing as stated on the datasheet
- Valid for 12 months from date of delivery
- Response to your inquiry within 24 hours

- We provide support in Chinese, English, French, German, Japanese and Spanish
- Extensive multi-media technical resources to help you
- We investigate all quality concerns to ensure our products perform to the highest standards

If the product does not perform as described on this datasheet, we will offer a refund or replacement. For full details of the Abpromise, please visit <https://www.abcam.co.jp/abpromise> or contact our technical team.

Terms and conditions

- Guarantee only valid for products bought direct from Abcam or one of our authorized distributors