


# Anti-PHF8 antibody ab84779

**1** [References](#) **2** [画像数](#)

### 製品の概要

製品名	Anti-PHF8 antibody
製品の詳細	Rabbit polyclonal to PHF8
由来種	Rabbit
アプリケーション	<b>適用あり:</b> IHC-P
種交差性	<b>交差種:</b> Mouse, Human <b>交差が予測される動物種:</b> Rabbit, Horse, Cow, Dog, Pig, Chimpanzee, Ferret, Rhesus monkey, Gorilla, Orangutan, Elephant 
免疫原	Synthetic peptide corresponding to a region between residue 650 and 700 of human PHF8 (CA41576.1).
ポジティブ・コントロール	Human controls: Breast Carcinoma, Colon Carcinoma, Pancreatic Islet Cell Tumor, Prostate Carcinoma, Stomach Adenocarcinoma Mouse control: Teratoma
特記事項	<p>The Life Science industry has been in the grips of a reproducibility crisis for a number of years. Abcam is leading the way in addressing this with our range of recombinant monoclonal antibodies and knockout edited cell lines for gold-standard validation. Please check that this product meets your needs before purchasing.</p> <p>If you have any questions, special requirements or concerns, please send us an inquiry and/or contact our Support team ahead of purchase. Recommended alternatives for this product can be found below, along with publications, customer reviews and Q&amp;As</p>

### 製品の特性

製品の状態	Liquid
保存方法	Shipped at 4°C. Upon delivery aliquot and store at -20°C. Avoid freeze / thaw cycles.
バッファー	pH: 6.8 Preservative: 0.09% Sodium azide Constituents: 0.1% BSA, Tris buffered saline
精製度	Immunogen affinity purified
特記事項(精製)	ab84779 was affinity purified using an epitope specific to PHF8 immobilized on solid support.
ポリ/モノ	ポリクローナル
アイソタイプ	IgG

## アプリケーション

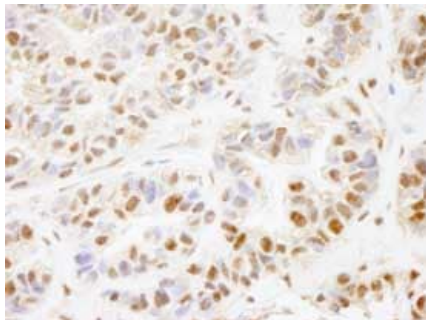
**The Abpromise guarantee**      **Abpromise保証は、** 次のテスト済みアプリケーションにおけるab84779の使用に適用されます  
アプリケーションノートには、推奨の開始希釈率がありますが、適切な希釈率につきましてはご確認ください。

アプリケーション	Abreviews	特記事項
IHC-P		1/100 - 1/500.

## ターゲット情報

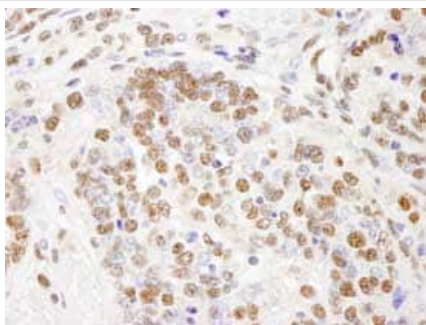
機能	Histone lysine demethylase with selectivity for the di-and monomethyl states that plays a key role cell cycle progression, rDNA transcription and brain development. Demethylates mono- and dimethylated histone H3 'Lys-9' residue (H3K9Me1 and H3K9Me2), dimethylated H3 'Lys-27' (H3K27Me2) and monomethylated histone H4 'Lys-20' residue (H4K20Me1). Acts as a transcription activator as H3K9Me1, H3K9Me2, H3K27Me2 and H4K20Me1 are epigenetic repressive marks. Involved in cell cycle progression by being required to control G1-S transition. Acts as a coactivator of rDNA transcription, by activating polymerase I (pol I) mediated transcription of rRNA genes. Required for brain development, probably by regulating expression of neuron-specific genes. Only has activity toward H4K20Me1 when nucleosome is used as a substrate and when not histone octamer is used as substrate. May also have weak activity toward dimethylated H3 'Lys-36' (H3K36Me2), however, the relevance of this result remains unsure in vivo. Specifically binds trimethylated 'Lys-4' of histone H3 (H3K4me3), affecting histone demethylase specificity: has weak activity toward H3K9me2 in absence of H3K4me3, while it has high activity toward H3K9me2 when binding H3K4me3.
関連疾患	Defects in PHF8 are the cause of mental retardation syndromic X-linked Siderius type (MRXSSD) [MIM:300263]. A disorder characterized by mild to borderline mental retardation with or without cleft lip/cleft palate.
配列類似性	Belongs to the JHDM1 histone demethylase family. JHDM1D subfamily. Contains 1 JmjC domain. Contains 1 PHD-type zinc finger.
ドメイン	The PHD-type zinc finger mediates the binding to H3K4me3. Binding to H3K4me3 promotes its access to H3K9me2. The linker region is a critical determinant of demethylase specificity. It enables the active site of JmjC to reach the target H3K9me2 when the PHD-type zinc finger binds to H3K4me3.
翻訳後修飾	Phosphorylation at Ser-69 and Ser-120 are required for dissociation from chromatin and accumulation of H4K20Me1 levels during prophase.
細胞内局在	Nucleus. Nucleus > nucleolus. Recruited to H3K4me3 sites on chromatin during interphase. Dissociates from chromatin when cells enter mitosis.

## 画像



Immunohistochemistry (Formalin/PFA-fixed paraffin-embedded sections) - Anti-PHF8 antibody (ab84779)

ab84779, at a 1/100 dilution, staining PHF8 in formalin fixed, paraffin embedded human breast carcinoma by Immunohistochemistry using DAB staining.



Immunohistochemistry (Formalin/PFA-fixed paraffin-embedded sections) - Anti-PHF8 antibody (ab84779)

ab84779, at a 1/100 dilution, staining PHF8 in formalin fixed, paraffin embedded mouse teratoma by Immunohistochemistry using DAB staining.

**Please note:** All products are "FOR RESEARCH USE ONLY. NOT FOR USE IN DIAGNOSTIC PROCEDURES"

### Our Abpromise to you: Quality guaranteed and expert technical support

- Replacement or refund for products not performing as stated on the datasheet
- Valid for 12 months from date of delivery
- Response to your inquiry within 24 hours
- We provide support in Chinese, English, French, German, Japanese and Spanish
- Extensive multi-media technical resources to help you
- We investigate all quality concerns to ensure our products perform to the highest standards

If the product does not perform as described on this datasheet, we will offer a refund or replacement. For full details of the Abpromise, please visit <https://www.abcam.co.jp/abpromise> or contact our technical team.

### Terms and conditions

- Guarantee only valid for products bought direct from Abcam or one of our authorized distributors