

# Anti-PHD finger protein 1/PHF1 antibody [EPR14222] ab184951

リコンビナント **RabMAb**

**1** Abreviews **4** References **画像数 9**

### 製品の概要

製品名	Anti-PHD finger protein 1/PHF1 antibody [EPR14222]
製品の詳細	Rabbit monoclonal [EPR14222] to PHF1
由来種	Rabbit
特異性	This antibody is specific to PHD finger protein 1, not paired helical filaments.
アプリケーション	<b>適用あり:</b> Flow Cyt (Intra), IHC-P, ICC/IF, WB, IP
種交差性	<b>交差種:</b> Mouse, Rat, Human
免疫原	Synthetic peptide. This information is proprietary to Abcam and/or its suppliers.
ポジティブ・コントロール	293, Jurkat, MCF7 and Human fetal brain lysates; Human pancreas and Rat skeletal muscle tissues; MCF7 cells; 293 cells. Mouse and rat brain tissue lysate. NIH/3T3, RAW264.7, C6 and PC-12 whole cell lysate.
特記事項	<p>This product is a recombinant monoclonal antibody, which offers several advantages including:</p> <ul style="list-style-type: none"> <li>- High batch-to-batch consistency and reproducibility</li> <li>- Improved sensitivity and specificity</li> <li>- Long-term security of supply</li> <li>- Animal-free production</li> </ul> <p>For more information <a href="#">see here</a>.</p> <p>Our RabMAb<sup>®</sup> technology is a patented hybridoma-based technology for making rabbit monoclonal antibodies. For details on our patents, please refer to <a href="#">RabMAb<sup>®</sup> patents</a>.</p>

### 製品の特性

製品の状態	Liquid
保存方法	Shipped at 4°C. Store at +4°C short term (1-2 weeks). Upon delivery aliquot. Store at -20°C long term. Avoid freeze / thaw cycle.
バッファー	<p>pH: 7.2</p> <p>Preservative: 0.01% Sodium azide</p> <p>Constituents: 40% Glycerol, 0.05% BSA, PBS</p>
精製度	Protein A purified
ポリ/モノ	モノクローナル

クローン名	EPR14222
アイソタイプ	IgG

アプリケーション

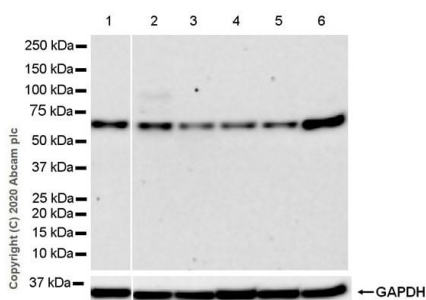
**The Abpromise guarantee**      **Abpromise保証は、** 次のテスト済みアプリケーションにおけるab184951の使用に適用されます  
 アプリケーションノートには、推奨の開始希釈率がありますが、適切な希釈率につきましてはご検討ください。

アプリケーション	Abreviews	特記事項
Flow Cyt (Intra)		1/160. <b>ab172730</b> - Rabbit monoclonal IgG, is suitable for use as an isotype control with this antibody.
IHC-P		1/50 - 1/100. Perform heat mediated antigen retrieval with Tris/EDTA buffer pH 9.0 before commencing with IHC staining protocol.
ICC/IF		1/250 - 1/500.
WB		1/1000 - 1/10000. Detects a band of approximately 62 kDa (predicted molecular weight: 62 kDa).
IP		1/30.

ターゲット情報

機能	Transcriptional repressor. May promote methylation of histone H3 on 'Lys-27' by the PRC2/EED-EZH2 complex.
組織特異性	Highest levels in heart, skeletal muscle, and pancreas, lower levels in brain, placenta, lung, liver and kidney.
配列類似性	Contains 2 PHD-type zinc fingers.
細胞内局在	Nucleus. Localizes specifically to the promoters of numerous target genes.

画像



Western blot - Anti-PHD finger protein 1/PHF1 antibody [EPR14222] (ab184951)

**All lanes :** Anti-PHD finger protein 1/PHF1 antibody [EPR14222] (ab184951) at 1/1000 dilution

**Lane 1 :** Mouse brain tissue

**Lane 2 :** NIH/3T3 (mouse embryonic fibroblast) whole cell lysate

**Lane 3 :** RAW264.7 (mouse Abelson murine leukemia virus-induced tumor macrophage) whole cell lysate

**Lane 4 :** Rat brain tissue lysate

**Lane 5 :** C6 (rat glial tumor glial cell) whole cell lysate

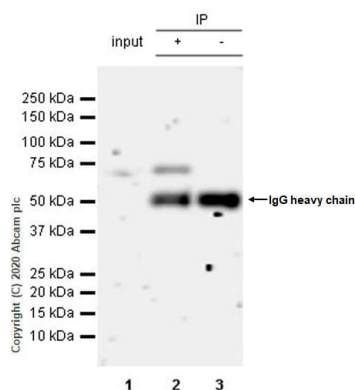
**Lane 6 :** PC-12 (rat adrenal gland pheochromocytoma) whole cell lysate

Lysates/proteins at 20 µg per lane.

## Secondary

**All lanes :** Goat Anti-Rabbit IgG, (H+L), Peroxidase conjugated ([ab97051](#)) at 1/100000 dilution

**Predicted band size:** 62 kDa



Immunoprecipitation - Anti-PHD finger protein 1/PHF1 antibody [EPR14222] (ab184951)

PHF1 was immunoprecipitated from 0.35 mg Mouse brain tissue lysate 10 ug with ab184951 at 1/30 dilution (2ug in 0.35mg lysates).

Western blot was performed on the immunoprecipitate using ab184951 at 1/1000 dilution. VeriBlot for IP Detection Reagent (HRP)([ab131366](#)) was used at 1/5000 dilution.

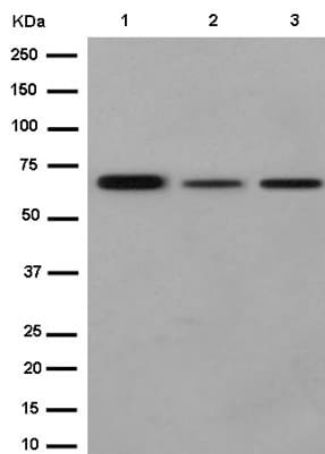
Lane 1: Mouse brain tissue lysate 10 ug

Lane 2: ab184951 IP in Mouse brain tissue lysate

Lane 3: Rabbit monoclonal IgG ([ab172730](#)) instead of ab184951 in mouse brain tissue lysate

Blocking and dilution buffer and concentration: 5% NFDm/TBST.

Exposure time: 3 minutes



Western blot - Anti-PHD finger protein 1/PHF1 antibody [EPR14222] (ab184951)

**All lanes :** Anti-PHD finger protein 1/PHF1 antibody [EPR14222] (ab184951) at 1/20000 dilution

**Lane 1 :** 293 lysate

**Lane 2 :** Jurkat lysate

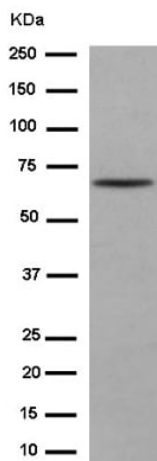
**Lane 3 :** MCF7 lysate

Lysates/proteins at 10 µg per lane.

#### Secondary

**All lanes :** Goat Anti-Rabbit IgG, (H+L), Peroxidase conjugated at 1/1000 dilution

**Predicted band size:** 62 kDa



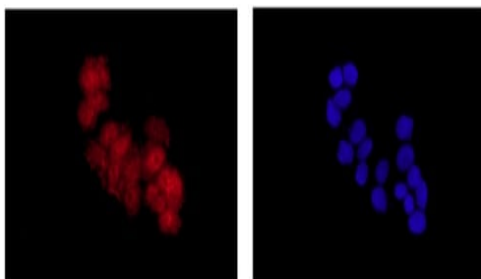
Western blot - Anti-PHD finger protein 1/PHF1 antibody [EPR14222] (ab184951)

Anti-PHD finger protein 1/PHF1 antibody [EPR14222] (ab184951) at 1/5000 dilution + Human fetal brain lysate at 10 µg

#### Secondary

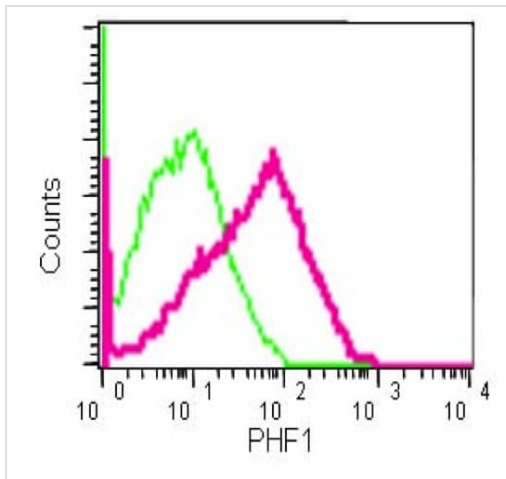
Goat Anti-Rabbit IgG, (H+L), Peroxidase conjugated at 1/1000 dilution

**Predicted band size:** 62 kDa



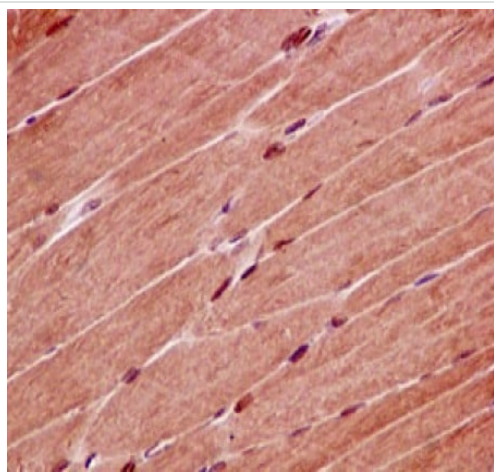
Immunocytochemistry/ Immunofluorescence - Anti-PHD finger protein 1/PHF1 antibody [EPR14222] (ab184951)

Immunofluorescent analysis of MCF7 cells (4% paraformaldehyde-fixed) labeling PHF1 with ab184951 at 1/500 dilution followed by Goat anti rabbit IgG (AlexaFluor® 555) secondary at 1/200 dilution and counter-stained with DAPI (blue).



Flow Cytometry (Intracellular) - Anti-PHD finger protein 1/PHF1 antibody [EPR14222] (ab184951)

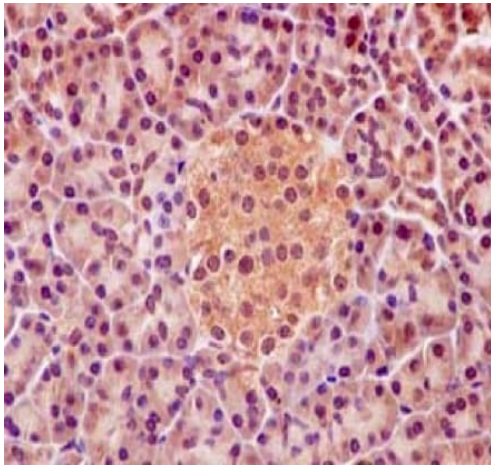
Intracellular flow cytometric analysis of 293 cells (2% paraformaldehyde-fixed) labeling PHF1 with ab184951 at 1/160 dilution (red) compared to a negative control antibody (red) or a rabbit IgG (negative) (green), followed by Goat anti rabbit IgG (FITC) secondary at 1/150 dilution.



Immunohistochemistry (Formalin/PFA-fixed paraffin-embedded sections) - Anti-PHD finger protein 1/PHF1 antibody [EPR14222] (ab184951)

Immunohistochemical analysis of paraffin-embedded Rat skeletal muscle tissue labeling PHF1 with ab184951 at 1/100 dilution followed by pre-diluted HRP-conjugated secondary antibody and counter-stained with Hematoxylin.

Perform heat mediated antigen retrieval with EDTA buffer pH 9 before commencing with IHC staining protocol.



Immunohistochemical analysis of paraffin-embedded Human pancreas tissue labeling PHF1 with ab184951 at 1/100 dilution followed by pre-diluted HRP-conjugated secondary antibody and counter-stained with Hematoxylin.

Perform heat mediated antigen retrieval with EDTA buffer pH 9 before commencing with IHC staining protocol.

Immunohistochemistry (Formalin/PFA-fixed paraffin-embedded sections) - Anti-PHD finger protein  
1/PHF1 antibody [EPR14222] (ab184951)

Why choose a recombinant antibody?



**Research with confidence**  
Consistent and reproducible results



**Long-term and scalable supply**  
Recombinant technology



**Success from the first experiment**  
Confirmed specificity



**Ethical standards compliant**  
Animal-free production

Anti-PHD finger protein 1/PHF1 antibody  
[EPR14222] (ab184951)

**Please note:** All products are "FOR RESEARCH USE ONLY. NOT FOR USE IN DIAGNOSTIC PROCEDURES"

### Our Abpromise to you: Quality guaranteed and expert technical support

- Replacement or refund for products not performing as stated on the datasheet
- Valid for 12 months from date of delivery
- Response to your inquiry within 24 hours
- We provide support in Chinese, English, French, German, Japanese and Spanish
- Extensive multi-media technical resources to help you
- We investigate all quality concerns to ensure our products perform to the highest standards

If the product does not perform as described on this datasheet, we will offer a refund or replacement. For full details of the Abpromise, please visit <https://www.abcam.co.jp/abpromise> or contact our technical team.

## Terms and conditions

---

- Guarantee only valid for products bought direct from Abcam or one of our authorized distributors