


Anti-PHAP1 antibody ab5992

1 References [画像数 4](#)

製品の概要

製品名	Anti-PHAP1 antibody
製品の詳細	Rabbit polyclonal to PHAP1
由来種	Rabbit
特異性	This antibody does not cross-react with PHAP12a or PHAP11L.
アプリケーション	適用あり: ICC/IF, WB
種交差性	交差種: Human 交差が予測される動物種: Rat 
免疫原	Synthetic peptide corresponding to Human PHAP1. (Peptide available as ab6241)
ポジティブ・コントロール	WB: Daudi, HeLa, HepG2, K562 and Raji cell lysates. ICC/IF: Raji cells
特記事項	<p>Apoptosis is related to many diseases and development. Caspase-9 plays a central role in cell death induced by a variety of apoptosis activators. Cytochrome c, after released from mitochondria, binds to Apaf-1, which forms an apoptosome that in turn binds to and activate procaspase-9. Activated caspase-9 cleaves and activates the effector caspases (caspase-3, -6 and -7), which are responsible for the proteolytic cleavage of many key proteins in apoptosis. The tumor suppressor putative HLA-DR-associated proteins (PHAPs) were recently identified as important regulators of mitochondrion apoptosis. PHAP appears to facilitate apoptosome-mediated caspase-9 activation and to stimulate the mitochondrial apoptotic pathway. PHAP was also shown to oppose both Ras- and Myc-mediated cell transformation.</p> <p>The Life Science industry has been in the grips of a reproducibility crisis for a number of years. Abcam is leading the way in addressing this with our range of recombinant monoclonal antibodies and knockout edited cell lines for gold-standard validation. Please check that this product meets your needs before purchasing.</p> <p>If you have any questions, special requirements or concerns, please send us an inquiry and/or contact our Support team ahead of purchase. Recommended alternatives for this product can be found below, along with publications, customer reviews and Q&As</p>

製品の特性

製品の状態	Liquid
保存方法	Shipped at 4°C. Store at +4°C short term (1-2 weeks). Store at -20°C long term. Avoid freeze /

	thaw cycle.
バッファー	pH: 7.2 Preservative: 0.02% Sodium azide Constituent: PBS
精製度	DEAE-Chromatography
一次抗体 備考	Apoptosis is related to many diseases and development. Caspase-9 plays a central role in cell death induced by a variety of apoptosis activators. Cytochrome c, after released from mitochondria, binds to Apaf-1, which forms an apoptosome that in turn binds to and activate procaspase-9. Activated caspase-9 cleaves and activates the effector caspases (caspase-3, -6 and -7), which are responsible for the proteolytic cleavage of many key proteins in apoptosis. The tumor suppressor putative HLA-DR-associated proteins (PHAPs) were recently identified as important regulators of mitochondrion apoptosis. PHAP appears to facilitate apoptosome-mediated caspase-9 activation and to stimulate the mitochondrial apoptotic pathway. PHAP was also shown to oppose both Ras- and Myc-mediated cell transformation.
ポリ/モノ	ポリクローナル
アイソタイプ	IgG

アプリケーション

The Abpromise guarantee **Abpromise保証は、次のテスト済みアプリケーションにおけるab5992の使用に適用されます**
 アプリケーションノートには、推奨の開始希釈率がありますが、適切な希釈率につきましてはご確認ください。

アプリケーション	Abreviews	特記事項
ICC/IF		Use a concentration of 2 µg/ml.
WB		Use a concentration of 0.5 - 2 µg/ml. Detects a band of approximately 32 kDa.

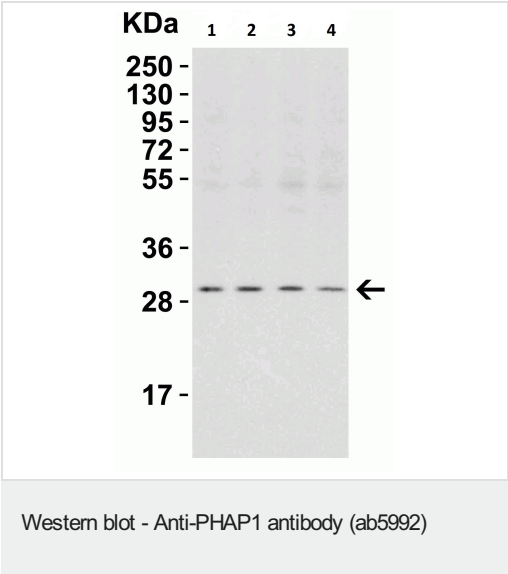
ターゲット情報

機能	Implicated in a number of cellular processes, including proliferation, differentiation, caspase-dependent and caspase-independent apoptosis, suppression of transformation (tumor suppressor), inhibition of protein phosphatase 2A, regulation of mRNA trafficking and stability in association with ELAVL1, and inhibition of acetyltransferases as part of the INHAT (inhibitor of histone acetyltransferases) complex. Plays a role in E4F1-mediated transcriptional repression.
組織特異性	Expressed in all tissues tested. Highly expressed in kidney and skeletal muscle, moderate levels of expression in brain, placenta and pancreas, and weakly expressed in lung. Found in all regions of the brain examined (amygdala, caudate nucleus, corpus callosum, hippocampus and thalamus), with highest levels in amygdala.
配列類似性	Belongs to the ANP32 family. Contains 4 LRR (leucine-rich) repeats. Contains 1 LRRCT domain.
翻訳後修飾	Phosphorylated on serine residues. The N-terminus is blocked. Some glutamate residues are glycylylated by TTLL8. This modification occurs exclusively on glutamate residues and results in a glycine chain on the gamma-carboxyl group.

細胞内局在

Nucleus. Cytoplasm. Endoplasmic reticulum. Translocates to the cytoplasm during the process of neuritogenesis (By similarity). Shuttles between nucleus and cytoplasm.

画像

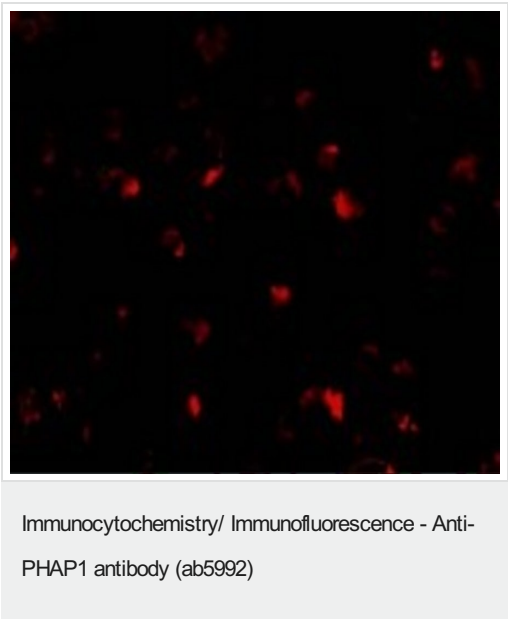


All lanes : Anti-PHAP1 antibody (ab5992) at 2 μ g/ml

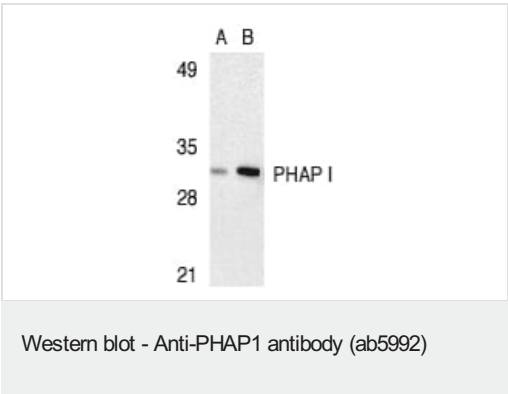
Lane 1 : Daudi cell lysates
Lane 2 : HeLa cell lysates
Lane 3 : HepG2 cell lysates
Lane 4 : K562 cell lysates

Lysates/proteins at 15 μ g per lane.

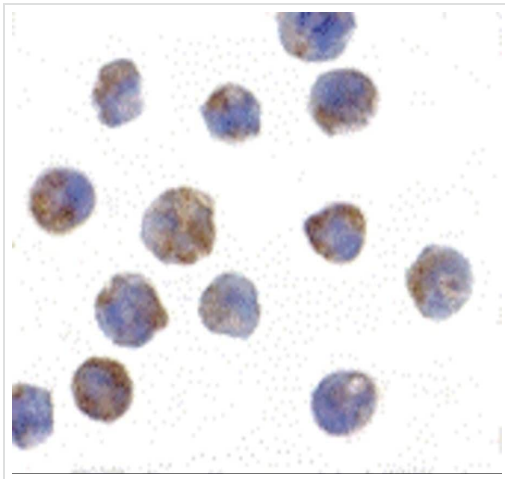
Secondary
All lanes : Goat anti-rabbit IgG HRP conjugate at 1/10000 dilution



Immunofluorescent analysis of 4% paraformaldehyde-fixed Raji Cells labeling PHAP I with ab5992 at 10 μ g/mL, followed by goat anti-rabbit IgG secondary antibody at 1/500 dilution (red).



Western blot analysis of PHAP I expression in human Raji cell lysate with anti-PHAP I at 2 μ g/ml (lane A) and 4 μ g/ml (lane B), respectively. Western blot analysis of PHAP I expression in human Raji cell lysate with anti-PHAP I at 2 μ g/ml (lane A) and 4 μ g/ml (lane B), respectively.



Immunocytochemistry/ Immunofluorescence - Anti-PHAP1 antibody (ab5992)

Immunocytochemical analysis of Raji cells labeling PHAP1 with ab5992 at 2 µg/mL. Cells were fixed with formaldehyde and blocked with 10% serum for 1 h at RT; antigen retrieval was by heat mediation with a citrate buffer (pH6). Samples were incubated with primary antibody overnight at 4 °C. A goat anti-rabbit IgG H&L (HRP) at 1/250 was used as secondary. Counter stained with Hematoxylin.

Please note: All products are "FOR RESEARCH USE ONLY. NOT FOR USE IN DIAGNOSTIC PROCEDURES"

Our Abpromise to you: Quality guaranteed and expert technical support

- Replacement or refund for products not performing as stated on the datasheet
- Valid for 12 months from date of delivery
- Response to your inquiry within 24 hours
- We provide support in Chinese, English, French, German, Japanese and Spanish
- Extensive multi-media technical resources to help you
- We investigate all quality concerns to ensure our products perform to the highest standards

If the product does not perform as described on this datasheet, we will offer a refund or replacement. For full details of the Abpromise, please visit <https://www.abcam.co.jp/abpromise> or contact our technical team.

Terms and conditions

- Guarantee only valid for products bought direct from Abcam or one of our authorized distributors