

### Anti-PGD antibody [EPR6565] ab129199

リコンビナント RabMAb

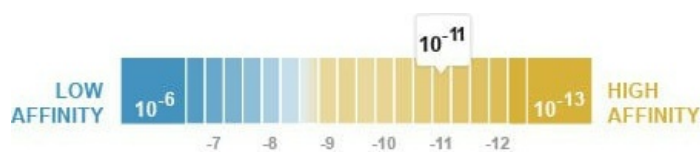
9 References 画像数 6

#### 製品の概要

製品名	Anti-PGD antibody [EPR6565]
製品の詳細	Rabbit monoclonal [EPR6565] to PGD
由来種	Rabbit
アプリケーション	<b>適用あり:</b> Flow Cyt (Intra), ICC/IF, WB <b>適用なし:</b> IHC-P
種交差性	<b>交差種:</b> Mouse, Rat, Human
免疫原	Synthetic peptide within Human PGD aa 400-500. The exact sequence is proprietary.
ポジティブ・コントロール	WB: Raji, Molt-4, and 293T cell lysates. ICC/IF: HeLa cells. Flow Cyt (intra): HEK293 cells.
特記事項	This product is a recombinant monoclonal antibody, which offers several advantages including: <ul style="list-style-type: none"> <li>- High batch-to-batch consistency and reproducibility</li> <li>- Improved sensitivity and specificity</li> <li>- Long-term security of supply</li> <li>- Animal-free production</li> </ul> For more information <a href="#">see here</a> . Our RabMAb <sup>®</sup> technology is a patented hybridoma-based technology for making rabbit monoclonal antibodies. For details on our patents, please refer to <a href="#">RabMAb<sup>®</sup> patents</a> .

#### 製品の特性

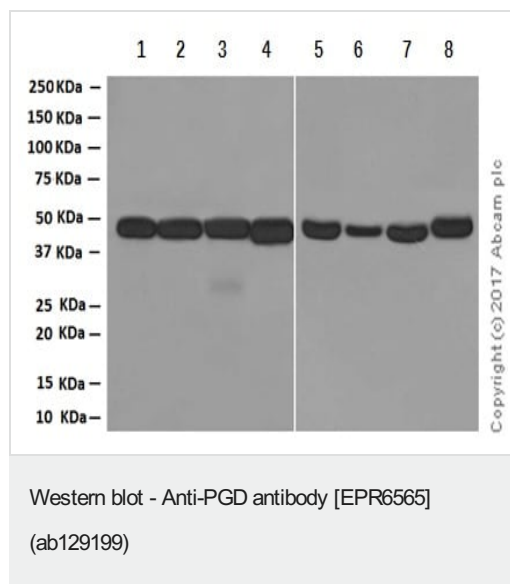
製品の状態	Liquid
保存方法	Shipped at 4°C. Store at -20°C. Stable for 12 months at -20°C.
解離定数 (K <sub>D</sub> 値)	K <sub>D</sub> = 4.53 x 10 <sup>-11</sup> M



[Learn more about K<sub>D</sub>](#)

バッファー	pH: 7.20 Preservative: 0.01% Sodium azide Constituents: 9% PBS, 40% Glycerol, 0.05% BSA, 50% Tissue culture supernatant
-------	---





**All lanes :** Anti-PGD antibody [EPR6565] (ab129199) at 1/5000 dilution

**Lane 1 :** Mouse brain tissue lysates

**Lane 2 :** Mouse heart tissue lysates

**Lane 3 :** Mouse kidney tissue lysates

**Lane 4 :** Mouse spleen tissue lysates

**Lane 5 :** Rat brain tissue lysates

**Lane 6 :** Rat heart tissue lysates

**Lane 7 :** Rat kidney tissue lysates

**Lane 8 :** Rat spleen tissue lysates

Lysates/proteins at 20 µg per lane.

## Secondary

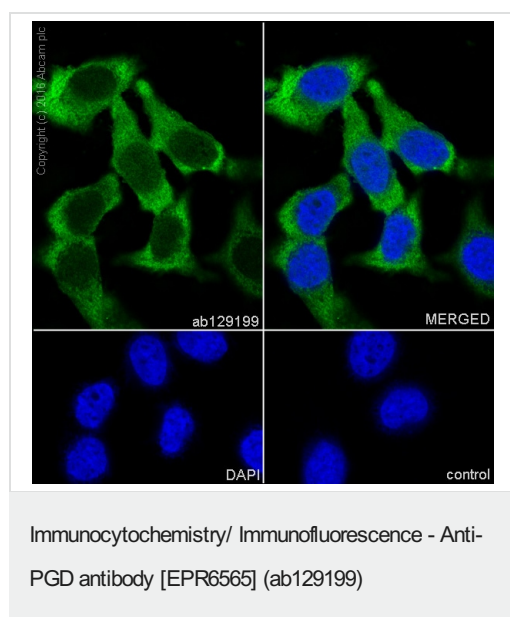
**All lanes :** Goat Anti-Rabbit IgG H&L (HRP) ([ab97051](#)) at 1/20000 dilution

**Predicted band size:** 53 kDa

**Observed band size:** 45 kDa

**Exposure time:** 3 minutes

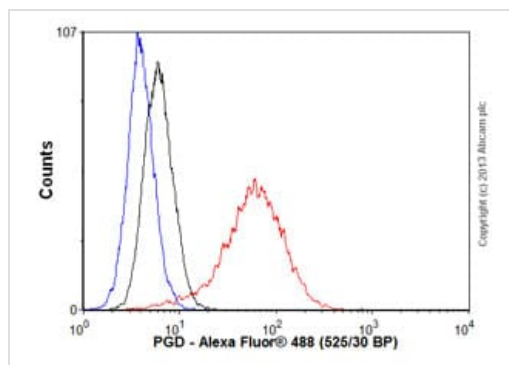
Blocking and dilution buffer: 5% NFDM/TBST.



Immunocytochemistry/Immunofluorescence analysis of HeLa cells labelling PGD with ab129199 at 1/500. Cells were fixed with 100% methanol. [ab150077](#), an Alexa Fluor® 488-conjugated goat anti-rabbit IgG (1/1000) was used as the secondary antibody.

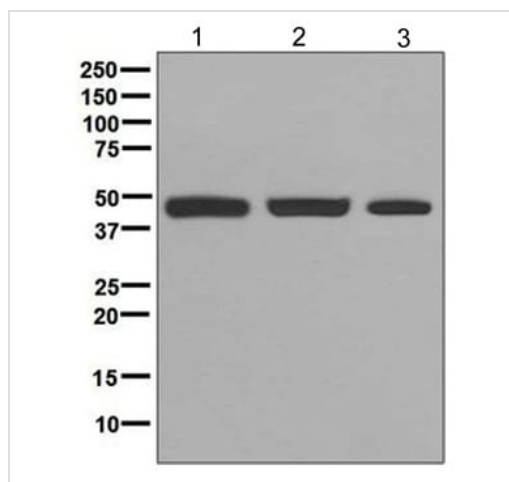
Control: PBS only.

Nuclear counter stain: DAPI.



Flow Cytometry (Intracellular) - Anti-PGD antibody  
[EPR6565] (ab129199)

Overlay histogram showing HEK293 cells stained with ab129199 (red line). The cells were fixed with 4% paraformaldehyde (10 min) and then permeabilized with 0.1% PBS-Tween for 20 min. The cells were then incubated in 1x PBS / 10% normal goat serum / 0.3M glycine to block non-specific protein-protein interactions followed by the antibody (ab129199, 1/1000 dilution) for 30 min at 22°C. The secondary antibody used was Alexa Fluor® 488 goat anti-rabbit IgG (H&L) ([ab150077](#)) at 1/2000 dilution for 30 min at 22°C. Isotype control antibody (black line) was rabbit IgG (monoclonal) (0.1 µg/1x10<sup>6</sup> cells) used under the same conditions. Unlabelled sample (blue line) was also used as a control. Acquisition of >5,000 events were collected using a 20mW Argon ion laser (488nm) and 525/30 bandpass filter. This antibody gave a positive signal in HEK293 cells fixed with 80% methanol (5 min)/permeabilized with 0.1% PBS-Tween for 20 min used under the same conditions.



Western blot - Anti-PGD antibody [EPR6565]  
(ab129199)

**All lanes** : Anti-PGD antibody [EPR6565] (ab129199) at 1/1000 dilution

**Lane 1** : Raji cell lysate

**Lane 2** : Molt-4 cell lysate

**Lane 3** : 293T (Human embryonic kidney epithelial cell) cell lysate

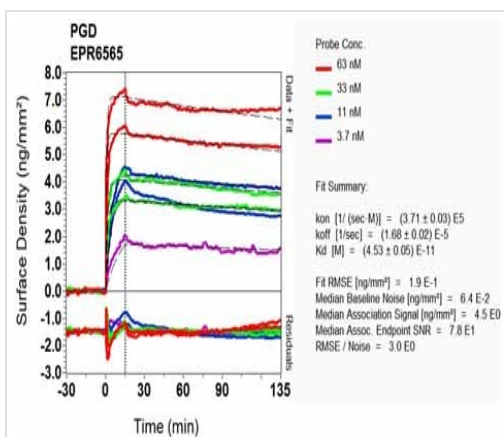
Lysates/proteins at 10 µg per lane.

#### Secondary

**All lanes** : Goat anti-rabbit HRP at 1/2000 dilution

**Predicted band size:** 53 kDa

**Observed band size:** 45 kDa



SPR Scanning - Anti-PGD antibody [EPR6565]  
(ab129199)

Equilibrium dissociation constant ( $K_D$ )

Learn more about  $K_D$

[Click here to learn more about  \$K\_D\$](#)

Why choose a  
recombinant antibody?



**Research with confidence**  
Consistent and reproducible results



**Long-term and scalable supply**  
Recombinant technology



**Success from the first experiment**  
Confirmed specificity



**Ethical standards compliant**  
Animal-free production

Anti-PGD antibody [EPR6565] (ab129199)

**Please note:** All products are "FOR RESEARCH USE ONLY. NOT FOR USE IN DIAGNOSTIC PROCEDURES"

### Our Abpromise to you: Quality guaranteed and expert technical support

- Replacement or refund for products not performing as stated on the datasheet
- Valid for 12 months from date of delivery
- Response to your inquiry within 24 hours
- We provide support in Chinese, English, French, German, Japanese and Spanish

- Extensive multi-media technical resources to help you
- We investigate all quality concerns to ensure our products perform to the highest standards

If the product does not perform as described on this datasheet, we will offer a refund or replacement. For full details of the Abpromise, please visit <https://www.abcam.co.jp/abpromise> or contact our technical team.

#### **Terms and conditions**

---

- Guarantee only valid for products bought direct from Abcam or one of our authorized distributors