

# PerCP/Cy5.5® Anti-IL-2 Receptor alpha antibody [PC61.5] ab210336

画像数 1

### 製品の概要

製品名	PerCP/Cy5.5® Anti-IL-2 Receptor alpha antibody [PC61.5]
製品の詳細	PerCP/Cy5.5® Rat monoclonal [PC61.5] to IL-2 Receptor alpha
由来種	Rat
標識	PerCP/Cy5.5®. Ex: 482nm, Em: 690nm
アプリケーション	適用あり: Flow Cyt
種交差性	交差種: Mouse, Rat
免疫原	The details of the immunogen for this antibody are not available.
ポジティブ・コントロール	C57Bl/6 splenocytes.
特記事項	<p>The Life Science industry has been in the grips of a reproducibility crisis for a number of years. Abcam is leading the way in addressing this with our range of recombinant monoclonal antibodies and knockout edited cell lines for gold-standard validation. Please check that this product meets your needs before purchasing.</p> <p>If you have any questions, special requirements or concerns, please send us an inquiry and/or contact our Support team ahead of purchase. Recommended alternatives for this product can be found below, along with publications, customer reviews and Q&amp;As</p>

### 製品の特性

製品の状態	Liquid
保存方法	Shipped at 4°C. Store at +4°C. Store In the Dark.
バッファー	<p>pH: 7.20</p> <p>Preservative: 0.09% Sodium azide</p> <p>Constituents: 0.12% Monobasic dihydrogen sodium phosphate, 0.87% Sodium chloride, 0.1% Gelatin</p>
精製度	Protein A purified
特記事項(精製)	ab210336 was purified from tissue culture supernatant via affinity chromatography. The purified antibody was conjugated under optimal conditions, with unreacted dye removed from the preparation.
ポリ/モノ	モノクローナル

クローン名	PC61.5
アイソタイプ	IgG1
軽鎖の種類	lambda

## アプリケーション

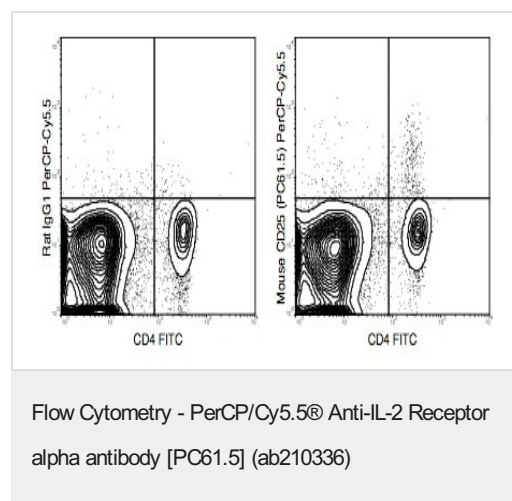
**The Abpromise guarantee** Abpromise保証は、 次のテスト済みアプリケーションにおけるab210336の使用に適用されます  
アプリケーションノートには、推奨の開始希釈率がありますが、適切な希釈率につきましてはご検討ください。

アプリケーション	Abreviews	特記事項
Flow Cyt		Use at an assay dependent concentration. Suggested use 0.25 µg.

## ターゲット情報

機能	Receptor for interleukin-2.
関連疾患	Genetic variations in IL2RA are associated with susceptibility to diabetes mellitus insulin-dependent type 10 (IDDM10) [MIM:601942]. A multifactorial disorder of glucose homeostasis that is characterized by susceptibility to ketoacidosis in the absence of insulin therapy. Clinical features are polydipsia, polyphagia and polyuria which result from hyperglycemia-induced osmotic diuresis and secondary thirst. These derangements result in long-term complications that affect the eyes, kidneys, nerves, and blood vessels.
配列類似性	Contains 2 Sushi (CCP/SCR) domains.
細胞内局在	Membrane.

## 画像



Flow Cytometric analysis of Mouse C57Bl/6 spleen cells labeling Anti-IL-2 Receptor alpha with FITC anti-Mouse CD4 antibody and ab210336 at 0.25 µg (right panel) or PerCP/Cy5.5® Rat IgG1 isotype control at 0.25 µg (left panel).

**Please note:** All products are "FOR RESEARCH USE ONLY. NOT FOR USE IN DIAGNOSTIC PROCEDURES"

### **Our Abpromise to you: Quality guaranteed and expert technical support**

---

- Replacement or refund for products not performing as stated on the datasheet
- Valid for 12 months from date of delivery
- Response to your inquiry within 24 hours
  
- We provide support in Chinese, English, French, German, Japanese and Spanish
- Extensive multi-media technical resources to help you
- We investigate all quality concerns to ensure our products perform to the highest standards

If the product does not perform as described on this datasheet, we will offer a refund or replacement. For full details of the Abpromise, please visit <https://www.abcam.co.jp/abpromise> or contact our technical team.

### **Terms and conditions**

---

- Guarantee only valid for products bought direct from Abcam or one of our authorized distributors