

PerCP Anti-CD38 antibody [HIT2] ab74688

画像数 1

製品の概要

製品名	PerCP Anti-CD38 antibody [HIT2]
製品の詳細	PerCP Mouse monoclonal [HIT2] to CD38
由来種	Mouse
標識	PerCP. Ex: 482nm, Em: 675nm
特異性	ab74688 reacts with CD38, a 45 kDa type II transmembrane glycoprotein strongly expressed mainly on plasma cells and activated T and B lymphocytes.
アプリケーション	適用あり: Flow Cyt
種交差性	交差種: Human
免疫原	Tissue, cells or virus corresponding to Human CD38. Human thymocytes in fetus
特記事項	The content of a vial (1 ml) is sufficient for 100 tests. CD38 is an antigenic marker of lymphoid cells. The Life Science industry has been in the grips of a reproducibility crisis for a number of years. Abcam is leading the way in addressing this with our range of recombinant monoclonal antibodies and knockout edited cell lines for gold-standard validation. Please check that this product meets your needs before purchasing. If you have any questions, special requirements or concerns, please send us an inquiry and/or contact our Support team ahead of purchase. Recommended alternatives for this product can be found below, along with publications, customer reviews and Q&As

製品の特性

製品の状態	Liquid
保存方法	Shipped at 4°C. Store at +4°C.
バッファー	pH: 7.4 Preservative: 0.097% Sodium azide Constituents: 0.2% BSA, PBS
精製度	Size exclusion
特記事項 (精製)	The conjugate is made from highly purified antibodies (>95% by SDS-PAGE). It is then purified by size-exclusion chromatography and adjusted for direct use.

一次抗体 備考	CD38 is an antigenic marker of lymphoid cells.
ポリ/モノ	モノクローナル
クローン名	HIT2
アイソタイプ	IgG1

アプリケーション

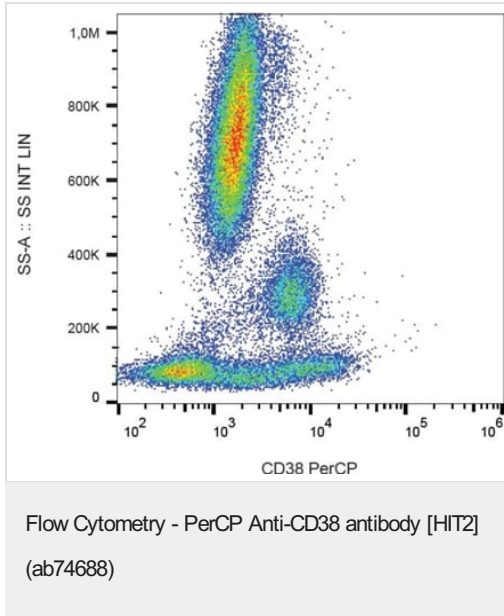
The Abpromise guarantee Abpromise保証は、次のテスト済みアプリケーションにおけるab74688の使用に適用されません
 アプリケーションノートには、推奨の開始希釈率がありますが、適切な希釈率につきましてはご検討ください。

アプリケーション	Abreviews	特記事項
Flow Cyt		Use 10µl for 10 ⁶ cells. Use 10µl for 10 ⁶ cells in suspension, or for 100 µl of whole blood.

ターゲット情報

機能	Synthesizes cyclic ADP-ribose, a second messenger for glucose-induced insulin secretion. Also has cADPr hydrolase activity. Also moonlights as a receptor in cells of the immune system.
組織特異性	Expressed at high levels in pancreas, liver, kidney, brain, testis, ovary, placenta, malignant lymphoma and neuroblastoma.
配列類似性	Belongs to the ADP-ribosyl cyclase family.
発生段階	Preferentially expressed at both early and late stages of the B and T-cell maturation. It is also detected on erythroid and myeloid progenitors in bone marrow, where the level of surface expression was shown to decrease during differentiation of blast-forming unit E to colony-forming unit E.
細胞内局在	Membrane.
製品の状態	There are 2 isoforms produced by alternative splicing.

画像



Analysis by flow cytometry of ab74688 staining CD38 in human peripheral blood cells.

Please note: All products are "FOR RESEARCH USE ONLY. NOT FOR USE IN DIAGNOSTIC PROCEDURES"

Our Abpromise to you: Quality guaranteed and expert technical support

- Replacement or refund for products not performing as stated on the datasheet
- Valid for 12 months from date of delivery
- Response to your inquiry within 24 hours
- We provide support in Chinese, English, French, German, Japanese and Spanish
- Extensive multi-media technical resources to help you
- We investigate all quality concerns to ensure our products perform to the highest standards

If the product does not perform as described on this datasheet, we will offer a refund or replacement. For full details of the Abpromise, please visit <https://www.abcam.co.jp/abpromise> or contact our technical team.

Terms and conditions

- Guarantee only valid for products bought direct from Abcam or one of our authorized distributors