

### Anti-PELP1 antibody [EPR22863-99] ab270398

リコンビナント **RabMAb**

画像数 8

#### 製品の概要

製品名	Anti-PELP1 antibody [EPR22863-99]
製品の詳細	Rabbit monoclonal [EPR22863-99] to PELP1
由来種	Rabbit
アプリケーション	<b>適用あり:</b> Flow Cyt (Intra), WB, ICC/IF <b>適用なし:</b> IHC-P or IP
種交差性	<b>交差種:</b> Human
免疫原	Synthetic peptide. This information is proprietary to Abcam and/or its suppliers.
ポジティブ・コントロール	WB: Human testis lysate; MCF7, HEK-293T, SW620 and HeLa whole cell lysates. ICC/IF: MCF7 and HeLa cells. Flow Cyt (intra): MCF7 and HeLa cells.
特記事項	<p>This product is a recombinant monoclonal antibody, which offers several advantages including:</p> <ul style="list-style-type: none"> <li>- High batch-to-batch consistency and reproducibility</li> <li>- Improved sensitivity and specificity</li> <li>- Long-term security of supply</li> <li>- Animal-free production</li> </ul> <p>For more information <a href="#">see here</a>.</p> <p>Our RabMAb<sup>®</sup> technology is a patented hybridoma-based technology for making rabbit monoclonal antibodies. For details on our patents, please refer to <a href="#">RabMAb<sup>®</sup> patents</a>.</p>

#### 製品の特性

製品の状態	Liquid
保存方法	Shipped at 4°C. Store at +4°C short term (1-2 weeks). Upon delivery aliquot. Store at -20°C long term. Avoid freeze / thaw cycle.
バッファー	pH: 7.2 Preservative: 0.01% Sodium azide Constituents: PBS, 40% Glycerol (glycerin, glycerine), 0.05% BSA
精製度	Protein A purified
ポリ/モノ	モノクローナル
クローン名	EPR22863-99

## アプリケーション

**The Abpromise guarantee** Abpromise保証は、 次のテスト済みアプリケーションにおけるab270398の使用に適用されます  
アプリケーションノートには、推奨の開始希釈率がありますが、適切な希釈率につきましてはご検討ください。

アプリケーション	Abreviews	特記事項
Flow Cyt (Intra)		1/500.
WB		1/1000. Detects a band of approximately 160 kDa (predicted molecular weight: 120 kDa).
ICC/IF		1/50.

## 追加情報

Is unsuitable for IHC-P or IP.

## ターゲット情報

## 機能

Coactivator of estrogen receptor-mediated transcription and a corepressor of other nuclear hormone receptors and sequence-specific transcription factors. Plays a role in estrogen receptor (ER) genomic activity when present in the nuclear compartment by activating the ER target genes in a hormonal stimulation dependent manner. Can facilitate ER non-genomic signaling via SRC and PI3K interaction in the cytosol. Plays a role in E2-mediated cell cycle progression by interacting with RB1. May have important functional implications in ER/growth factor cross-talk. Interacts with several growth factor signaling components including EGFR and HRS. Involved in nuclear receptor signaling via its interaction with AR and NR3C1. May promote tumorigenesis via its interaction with and modulation of several oncogenes including SRC, PI3K, STAT3 and EGFR. Plays a role in cancer cell metastasis via its ability to modulate E2-mediated cytoskeleton changes and cell migration via its interaction with SRC and PI3K.

## 組織特異性

Isoform 2 is expressed in breast cancer cell lines. Isoform 1 is widely expressed.

## ドメイン

The Glu-rich region mediates histones interaction.  
The Leu-Xaa-Xaa-Leu-Leu (LXXLL) motifs are required for the association with nuclear receptor ESR1.

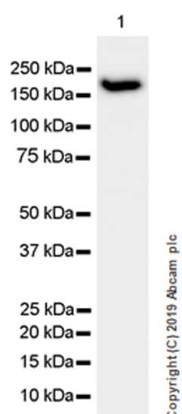
## 翻訳後修飾

Phosphorylated upon DNA damage, probably by ATM or ATR.

## 細胞内局在

Nucleus. Cytoplasm. Also found associated with the plasma membrane. Mainly in cytoplasm in a subset of breast tumors. Localization is widely deregulated in endometrial cancers with predominantly cytoplasm localization in high-grade endometrial tumors.

## 画像



Western blot - Anti-PELP1 antibody [EPR22863-99] (ab270398)

Anti-PELP1 antibody [EPR22863-99] (ab270398) at 1/1000 dilution + HEK-293 (human embryonic kidney epithelial cell), whole cell lysate at 20 µg

### Secondary

Goat Anti-Rabbit IgG H&L (HRP) ([ab97051](#)) at 1/100000 dilution

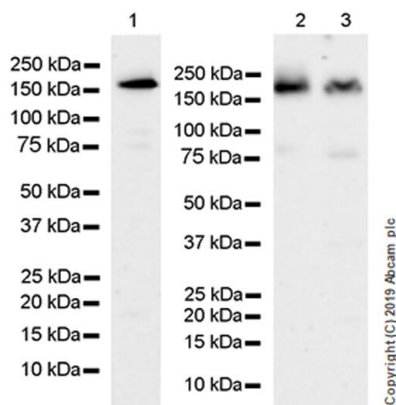
**Predicted band size:** 120 kDa

**Observed band size:** 160 kDa

Blocking and diluting buffer and concentration: 5% NFDM/TBST.

The expression profile observed is consistent with what has been described in the literature (PMID: 27045366, 11481323).

Exposure time: 37 seconds.



Western blot - Anti-PELP1 antibody [EPR22863-99] (ab270398)

**All lanes :** Anti-PELP1 antibody [EPR22863-99] (ab270398) at 1/1000 dilution

**Lane 1 :** MCF7 (human breast adenocarcinoma epithelial cell), whole cell lysate

**Lane 2 :** SW620 (human colorectal adenocarcinoma epithelial cell), whole cell lysate

**Lane 3 :** HeLa (human cervix adenocarcinoma epithelial cell), whole cell lysate

Lysates/proteins at 20 µg per lane.

### Secondary

**All lanes :** Goat Anti-Rabbit IgG H&L (HRP) ([ab97051](#)) at 1/50000 dilution

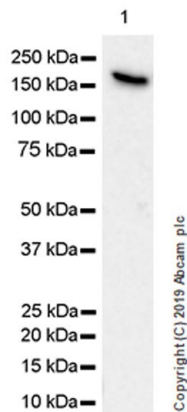
**Predicted band size:** 120 kDa

**Observed band size:** 160 kDa

Blocking and diluting buffer and concentration: 5% NFDM/TBST.

The expression profile observed is consistent with what has been described in the literature (PMID: 27045366, 11481323).

Exposure time: Lane 1: 59 seconds; Lanes 2-3: 70 seconds.



Western blot - Anti-PELP1 antibody [EPR22863-99] (ab270398)

Anti-PELP1 antibody [EPR22863-99] (ab270398) at 1/1000 dilution + Human testis tissue lysate at 20 µg

### Secondary

VeriBlot for IP Detection Reagent (HRP) ([ab131366](#)) at 1/1000 dilution

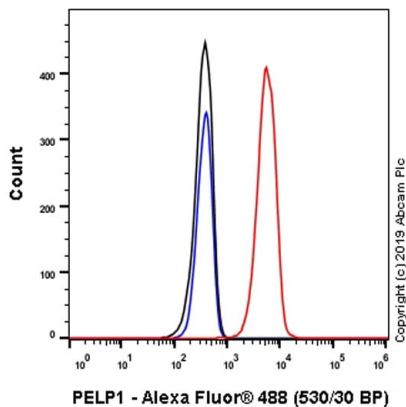
**Predicted band size:** 120 kDa

**Observed band size:** 160 kDa

Blocking and diluting buffer and concentration: 5% NFDM/TBST.

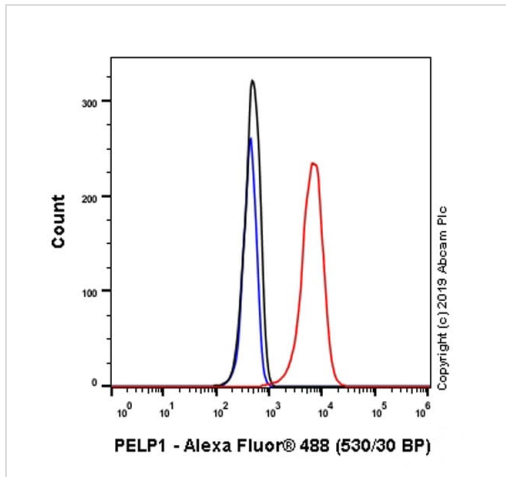
The expression profile observed is consistent with what has been described in the literature (PMID: 27045366, 11481323).

Exposure time: 3 minutes.



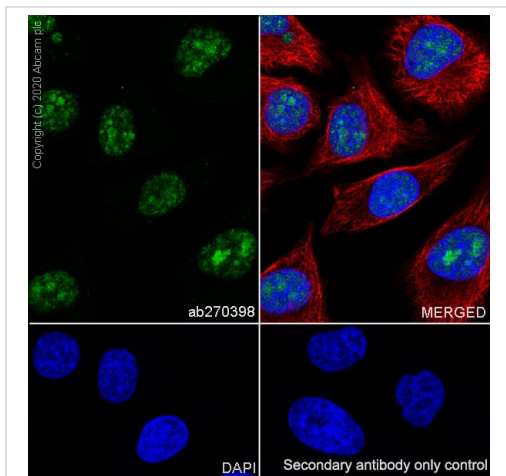
Flow Cytometry (Intracellular) - Anti-PELP1 antibody [EPR22863-99] (ab270398)

Intracellular flow cytometric analysis of 4% paraformaldehyde-fixed, 90% methanol-permeabilized HeLa (Human cervix adenocarcinoma epithelial cell) cells labelling PELP1 with ab270398 at 1/500 (Red) compared with a Rabbit monoclonal IgG ([ab172730](#)) (Black) isotype control and an unlabelled control (cells without incubation with primary antibody and secondary antibody) (Blue). A Goat anti rabbit IgG (Alexa Fluor® 488, [ab150077](#)) at 1/2000 dilution was used as the secondary antibody.



Flow Cytometry (Intracellular) - Anti-PELP1 antibody  
[EPR22863-99] (ab270398)

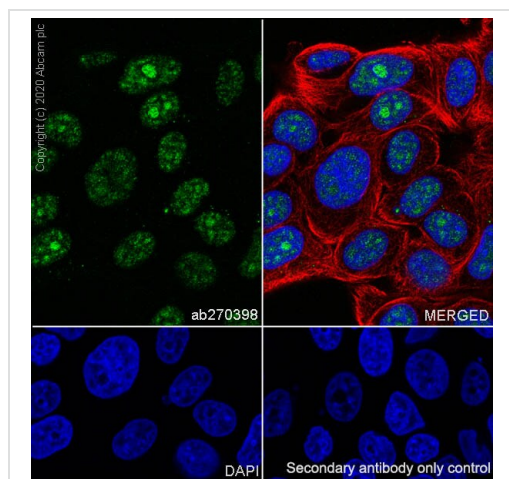
Intracellular flow cytometric analysis of 4% paraformaldehyde-fixed, 90% methanol-permeabilized MCF7 (Human breast adenocarcinoma epithelial cell) cells labelling PELP1 with ab270398 at 1/500 (Red) compared with a Rabbit monoclonal IgG (**ab172730**) (Black) isotype control and an unlabelled control (cells without incubation with primary antibody and secondary antibody) (Blue). A Goat anti rabbit IgG (Alexa Fluor® 488, **ab150077**) at 1/2000 dilution was used as the secondary antibody.



Immunocytochemistry/ Immunofluorescence - Anti-PELP1 antibody [EPR22863-99] (ab270398)

Immunofluorescent analysis of 4% Paraformaldehyde-fixed, 0.1% Triton X-100 permeabilized HeLa cells labelling PELP1 with ab270398 at 1/50 dilution, followed by **ab150077** Goat Anti-Rabbit IgG H&L (Alexa Fluor® 488) antibody at 1/1000 dilution (Green). Confocal image showing nuclear staining in HeLa cells. **ab195889** Anti-alpha Tubulin antibody (Alexa Fluor® 594) was used to counterstain tubulin at 1/200 dilution (Red). The Nuclear counterstain was DAPI (Blue).

Secondary antibody only control: Secondary antibody is **ab150077** Goat Anti-Rabbit IgG H&L (Alexa Fluor® 488) at 1/1000 dilution.







Immunocytochemistry/ Immunofluorescence - Anti-PELP1 antibody [EPR22863-99] (ab270398)

Immunofluorescent analysis of 4% Paraformaldehyde-fixed, 0.1% TritonX-100 permeabilized MCF7 cells labelling PELP1 with ab270398 at 1/50 dilution, followed by **ab150077** Goat Anti-Rabbit IgG H&L (Alexa Fluor® 488) antibody at 1/1000 dilution (Green). Confocal image showing nuclear staining in MCF7 cells. **ab195889** Anti-alpha Tubulin antibody (Alexa Fluor® 594) was used to counterstain tubulin at 1/200 dilution (Red). The Nuclear counterstain was DAPI (Blue).

Secondary antibody only control: Secondary antibody is **ab150077** Goat Anti-Rabbit IgG H&L (Alexa Fluor® 488) at 1/1000 dilution.

Why choose a recombinant antibody?

 <p><b>Research with confidence</b> Consistent and reproducible results</p>	 <p><b>Long-term and scalable supply</b> Recombinant technology</p>
 <p><b>Success from the first experiment</b> Confirmed specificity</p>	 <p><b>Ethical standards compliant</b> Animal-free production</p>

Anti-PELP1 antibody [EPR22863-99] (ab270398)

**Please note:** All products are "FOR RESEARCH USE ONLY. NOT FOR USE IN DIAGNOSTIC PROCEDURES"

### Our Abpromise to you: Quality guaranteed and expert technical support

- Replacement or refund for products not performing as stated on the datasheet
- Valid for 12 months from date of delivery
- Response to your inquiry within 24 hours

- We provide support in Chinese, English, French, German, Japanese and Spanish
- Extensive multi-media technical resources to help you
- We investigate all quality concerns to ensure our products perform to the highest standards

If the product does not perform as described on this datasheet, we will offer a refund or replacement. For full details of the Abpromise, please visit <https://www.abcam.co.jp/abpromise> or contact our technical team.

#### **Terms and conditions**

---

- Guarantee only valid for products bought direct from Abcam or one of our authorized distributors