

### PE/Cy7® Anti-CD69 antibody [FN50] ab233573

#### 画像数 1

#### 製品の概要

---

製品名	PE/Cy7® Anti-CD69 antibody [FN50]
製品の詳細	PE/Cy7® Mouse monoclonal [FN50] to CD69
由来種	Mouse
標識	PE/Cy7®. Ex: 496nm, Em: 774nm
アプリケーション	<b>適用あり:</b> Flow Cyt
種交差性	<b>交差種:</b> Human
免疫原	Tissue, cells or virus corresponding to Human CD69. Anti- $\mu$ -stimulated human B lymphocytes.
ポジティブ・コントロール	Flow Cytometry: Human peripheral blood cells.
特記事項	<p>This product or portions thereof is manufactured under license from Carnegie Mellon University under U.S. Patent Number 5, 268, 486 and related patents. Cy® and CyDye® are trademarks of Cytiva.</p> <p>The Life Science industry has been in the grips of a reproducibility crisis for a number of years. Abcam is leading the way in addressing this with our range of recombinant monoclonal antibodies and knockout edited cell lines for gold-standard validation. Please check that this product meets your needs before purchasing.</p> <p>If you have any questions, special requirements or concerns, please send us an inquiry and/or contact our Support team ahead of purchase. Recommended alternatives for this product can be found below, along with publications, customer reviews and Q&amp;As</p>

#### 製品の特性

---

製品の状態	Liquid
保存方法	Shipped at 4°C. Store at +4°C. Store In the Dark.
バッファー	pH: 7.4 Preservative: 0.0975% Sodium azide Constituent: PBS
精製度	Size exclusion
ポリ/モノ	モノクローナル
クローン名	FN50
アイソタイプ	IgG1

## アプリケーション

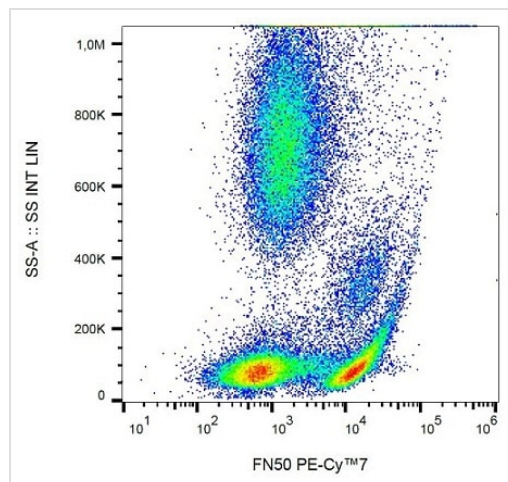
**The Abpromise guarantee** **Abpromise保証は、次のテスト済みアプリケーションにおけるab233573の使用に適用されます**  
アプリケーションノートには、推奨の開始希釈率がありますが、適切な希釈率につきましてはご検討ください。

アプリケーション	Abreviews	特記事項
Flow Cyt		Use 4µl for 10 <sup>6</sup> cells.

## ターゲット情報

<b>機能</b>	Involved in lymphocyte proliferation and functions as a signal transmitting receptor in lymphocytes, natural killer (NK) cells, and platelets.
<b>組織特異性</b>	Expressed on the surface of activated T-cells, B-cells, natural killer cells, neutrophils, eosinophils, epidermal Langerhans cells and platelets.
<b>配列類似性</b>	Contains 1 C-type lectin domain.
<b>発生段階</b>	Earliest inducible cell surface glycoprotein acquired during lymphoid activation.
<b>翻訳後修飾</b>	Constitutive Ser/Thr phosphorylation in both mature thymocytes and activated T-lymphocytes.
<b>細胞内局在</b>	Membrane.

## 画像



Flow Cytometry - PE/Cy7® Anti-CD69 antibody  
[FN50] (ab233573)

Surface staining of human peripheral blood cells using ab233573.  
Gated on leukocytes and platelets.

**Please note:** All products are "FOR RESEARCH USE ONLY. NOT FOR USE IN DIAGNOSTIC PROCEDURES"

**Our Abpromise to you: Quality guaranteed and expert technical support**

- Replacement or refund for products not performing as stated on the datasheet
- Valid for 12 months from date of delivery
- Response to your inquiry within 24 hours
  
- We provide support in Chinese, English, French, German, Japanese and Spanish
- Extensive multi-media technical resources to help you
- We investigate all quality concerns to ensure our products perform to the highest standards

If the product does not perform as described on this datasheet, we will offer a refund or replacement. For full details of the Abpromise, please visit <https://www.abcam.co.jp/abpromise> or contact our technical team.

### **Terms and conditions**

---

- Guarantee only valid for products bought direct from Abcam or one of our authorized distributors