

PE/Cy7® Anti-CD4 antibody [MEM241] ab233660

画像数 1

製品の概要

製品名	PE/Cy7® Anti-CD4 antibody [MEM241]
製品の詳細	PE/Cy7® Mouse monoclonal [MEM241] to CD4
由来種	Mouse
標識	PE/Cy7®. Ex: 496nm, Em: 774nm
アプリケーション	適用あり: Flow Cyt
種交差性	交差種: Human
免疫原	Recombinant fragment corresponding to CD4. 2 N-terminal domains of human CD4 fused to human IgG1 Fc.
ポジティブ・コントロール	Flow cytometry: human peripheral blood cells.
特記事項	<p>The Life Science industry has been in the grips of a reproducibility crisis for a number of years. Abcam is leading the way in addressing this with our range of recombinant monoclonal antibodies and knockout edited cell lines for gold-standard validation. Please check that this product meets your needs before purchasing.</p> <p>If you have any questions, special requirements or concerns, please send us an inquiry and/or contact our Support team ahead of purchase. Recommended alternatives for this product can be found below, along with publications, customer reviews and Q&As</p>

製品の特性

製品の状態	Liquid
保存方法	Shipped at 4°C. Store at +4°C. Store In the Dark.
バッファー	<p>pH: 7.4</p> <p>Preservative: 0.1% Sodium azide</p> <p>Constituent: PBS</p>
精製度	Size exclusion
ポリ/モノ	モノクローナル
クローン名	MEM241
アイソタイプ	IgG1

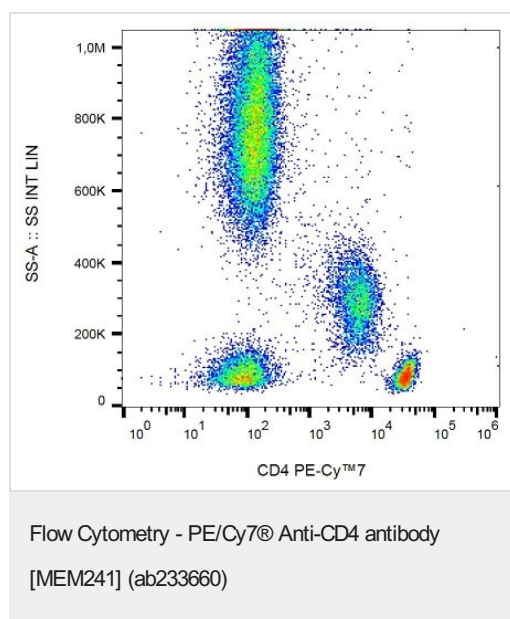
The Abpromise guarantee **Abpromise保証は、** 次のテスト済みアプリケーションにおけるab233660の使用に適用されます
アプリケーションノートには、推奨の開始希釈率がありますが、適切な希釈率につきましてはご検討ください。

アプリケーション	Abreviews	特記事項
Flow Cyt		Use 4µl for 10 ⁶ cells.

ターゲット情報

機能	Accessory protein for MHC class-II antigen/T-cell receptor interaction. May regulate T-cell activation. Induces the aggregation of lipid rafts.
配列類似性	Contains 3 Ig-like C2-type (immunoglobulin-like) domains. Contains 1 Ig-like V-type (immunoglobulin-like) domain.
翻訳後修飾	Palmitoylation and association with LCK contribute to the enrichment of CD4 in lipid rafts.
細胞内局在	Cell membrane. Localizes to lipid rafts. Removed from plasma membrane by HIV-1 Nef protein that increases clathrin-dependent endocytosis of this antigen to target it to lysosomal degradation. Cell surface expression is also down-modulated by HIV-1 Envelope polypeptide gp160 that interacts with, and sequesters CD4 in the endoplasmic reticulum.

画像



Surface staining of human peripheral blood cells with ab233660.

Please note: All products are "FOR RESEARCH USE ONLY. NOT FOR USE IN DIAGNOSTIC PROCEDURES"

Our Abpromise to you: Quality guaranteed and expert technical support

- Replacement or refund for products not performing as stated on the datasheet
- Valid for 12 months from date of delivery

- Response to your inquiry within 24 hours
- We provide support in Chinese, English, French, German, Japanese and Spanish
- Extensive multi-media technical resources to help you
- We investigate all quality concerns to ensure our products perform to the highest standards

If the product does not perform as described on this datasheet, we will offer a refund or replacement. For full details of the Abpromise, please visit <https://www.abcam.co.jp/abpromise> or contact our technical team.

Terms and conditions

- Guarantee only valid for products bought direct from Abcam or one of our authorized distributors