



# Anti-PECI/ECI2 antibody ab235322

**1 References** [画像数 2](#)

### 製品の概要

---

製品名	Anti-PECI/ECI2 antibody
製品の詳細	Rabbit polyclonal to PECI/ECI2
由来種	Rabbit
アプリケーション	<b>適用あり:</b> WB, IHC-P
種交差性	<b>交差種:</b> Mouse, Rat, Human
免疫原	Recombinant fragment corresponding to Human PECI/ECI2 aa 100-250. Database link: <a href="#">O75521</a>  <a href="#">Run BLAST with</a>  <a href="#">Run BLAST with</a>
ポジティブ・コントロール	WB: Rat heart lysate; Mouse heart and liver lysates. IHC-P: Human liver tissue.
特記事項	<p>The Life Science industry has been in the grips of a reproducibility crisis for a number of years. Abcam is leading the way in addressing this with our range of recombinant monoclonal antibodies and knockout edited cell lines for gold-standard validation. Please check that this product meets your needs before purchasing.</p> <p>If you have any questions, special requirements or concerns, please send us an inquiry and/or contact our Support team ahead of purchase. Recommended alternatives for this product can be found below, along with publications, customer reviews and Q&amp;As</p>

### 製品の特性

---

製品の状態	Liquid
保存方法	Shipped at 4°C. Store at +4°C short term (1-2 weeks). Upon delivery aliquot. Store at -20°C long term. Avoid freeze / thaw cycle.
バッファー	pH: 7.40 Preservative: 0.03% Proclin 300 Constituents: PBS, 50% Glycerol (glycerin, glycerine)
精製度	Protein G purified
特記事項(精製)	Purity >95%
ポリ/モノ	ポリクローナル
アイソタイプ	IgG

## アプリケーション

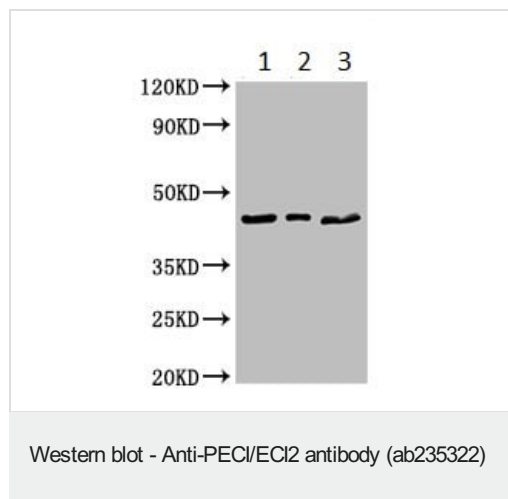
**The Abpromise guarantee** Abpromise保証は、次のテスト済みアプリケーションにおけるab235322の使用に適用されず  
アプリケーションノートには、推奨の開始希釈率がありますが、適切な希釈率につきましてはご検討ください。

アプリケーション	Abreviews	特記事項
WB		1/500 - 1/5000. Predicted molecular weight: 44 kDa.
IHC-P		1/20 - 1/200.

## ターゲット情報

機能	Able to isomerize both 3-cis and 3-trans double bonds into the 2-trans form in a range of enoyl-CoA species. Has a preference for 3-trans substrates.
組織特異性	Abundant in heart, skeletal muscle and liver. Expressed in CD34(+) T-cells and CD34(+) bone marrow cells.
配列類似性	In the C-terminal section; belongs to the enoyl-CoA hydratase/isomerase family. Contains 1 ACB (acyl-CoA-binding) domain.
細胞内局在	Mitochondrion and Peroxisome matrix.

## 画像



**All lanes** : Anti-PEC/ECI2 antibody (ab235322) at 1/500 dilution

**Lane 1** : Rat heart tissue lysate

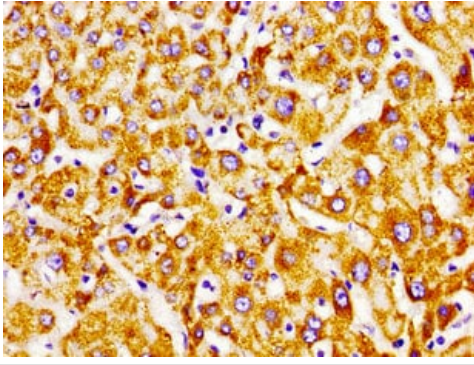
**Lane 2** : Mouse heart tissue lysate

**Lane 3** : Mouse liver tissue lysate

### Secondary

**All lanes** : Goat polyclonal to rabbit IgG at 1/50000 dilution

**Predicted band size:** 44 kDa



Paraffin-embedded human liver tissue stained for PECI/ECI2 using ab235322 at 1/100 dilution in immunohistochemical analysis.

Immunohistochemistry (Formalin/PFA-fixed paraffin-embedded sections) - Anti-PECI/ECI2 antibody (ab235322)

**Please note:** All products are "FOR RESEARCH USE ONLY. NOT FOR USE IN DIAGNOSTIC PROCEDURES"

### **Our Abpromise to you: Quality guaranteed and expert technical support**

---

- Replacement or refund for products not performing as stated on the datasheet
- Valid for 12 months from date of delivery
- Response to your inquiry within 24 hours
- We provide support in Chinese, English, French, German, Japanese and Spanish
- Extensive multi-media technical resources to help you
- We investigate all quality concerns to ensure our products perform to the highest standards

If the product does not perform as described on this datasheet, we will offer a refund or replacement. For full details of the Abpromise, please visit <https://www.abcam.co.jp/abpromise> or contact our technical team.

### **Terms and conditions**

---

- Guarantee only valid for products bought direct from Abcam or one of our authorized distributors