

PE Anti-VCAM1 antibody [M/K-2] ab25452

[1 References](#) [画像数 1](#)

製品の概要

製品名	PE Anti-VCAM1 antibody [M/K-2]
製品の詳細	PE Rat monoclonal [M/K-2] to VCAM1
由来種	Rat
標識	PE. Ex: 488nm, Em: 575nm
特異性	ab25452 recognises CD106/VCAM1 (100 kDa)
アプリケーション	適用あり: Flow Cyt
種交差性	交差種: Mouse
免疫原	Tissue, cells or virus corresponding to VCAM1. BALB/3T3 and +/-2.4 cells
ポジティブ・コントロール	Flow Cyt: Mouse bone marrow cells.
特記事項	

The M/K-2 monoclonal antibody has been used in transplant studies to suppress cardiac rejection and induce long term cardiac graft survival. It immunoprecipitates a peptide that gives a single band on SDS-PAGE gels with an apparent Mr of ~100 kDa under reducing conditions and 92 kDa under nonreducing conditions.

The Life Science industry has been in the grips of a reproducibility crisis for a number of years. Abcam is leading the way in addressing this with our range of recombinant monoclonal antibodies and knockout edited cell lines for gold-standard validation. Please check that this product meets your needs before purchasing.

If you have any questions, special requirements or concerns, please send us an inquiry and/or contact our Support team ahead of purchase. Recommended alternatives for this product can be found below, along with publications, customer reviews and Q&As

製品の特性

製品の状態	Liquid
保存方法	Shipped at 4°C. Store at +4°C. Store In the Dark.
バッファー	pH: 7.3 Preservative: 0.09% Sodium azide Constituents: PBS, 16% Sucrose Stabilising agent.

精製度	Affinity purified
一次抗体 備考	The M/K-2 monoclonal antibody has been used in transplant studies to suppress cardiac rejection and induce long term cardiac graft survival. It immunoprecipitates a peptide that gives a single band on SDS-PAGE gels with an apparent Mr of ~100 kDa under reducing conditions and 92 kDa under nonreducing conditions.
ポリ/モノ	モノクローナル
クローン名	M/K-2
アイソタイプ	IgG1
軽鎖の種類	kappa

アプリケーション

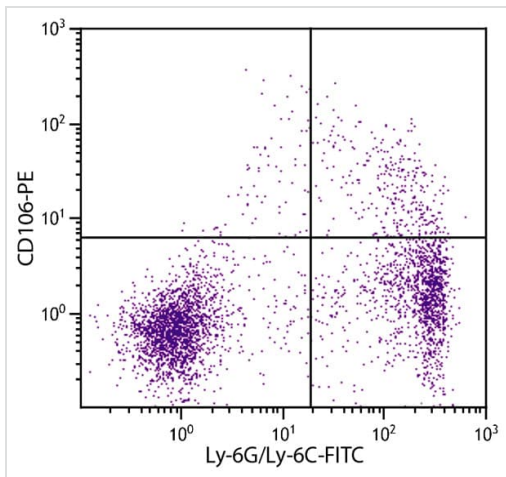
The Abpromise guarantee **Abpromise保証は、次のテスト済みアプリケーションにおけるab25452の使用に適用されます**
 アプリケーションノートには、推奨の開始希釈率がありますが、適切な希釈率につきましてはご検討ください。

アプリケーション	Abreviews	特記事項
Flow Cyt		Use 0.2µg for 10 ⁶ cells. ab154449 - Rat monoclonal IgG1, is suitable for use as an isotype control with this antibody.

ターゲット情報

機能	Important in cell-cell recognition. Appears to function in leukocyte-endothelial cell adhesion. Interacts with the beta-1 integrin VLA4 on leukocytes, and mediates both adhesion and signal transduction. The VCAM1/VLA4 interaction may play a pathophysiologic role both in immune responses and in leukocyte emigration to sites of inflammation.
組織特異性	Expressed on inflamed vascular endothelium, as well as on macrophage-like and dendritic cell types in both normal and inflamed tissue.
配列類似性	Contains 7 Ig-like C2-type (immunoglobulin-like) domains.
ドメイン	Either the first or the fourth Ig-like C2-type domain is required for VLA4-dependent cell adhesion.
翻訳後修飾	Sialoglycoprotein.
細胞内局在	Membrane.

画像



Flow Cytometry - PE Anti-VCAM1 antibody [M/K-2]
(ab25452)

Flow cytometry analysis staining VCAM1 in mouse bone marrow cells using ab25452 at a dilution of 0.1 $\mu\text{g}/10^6$ cells.

Please note: All products are "FOR RESEARCH USE ONLY. NOT FOR USE IN DIAGNOSTIC PROCEDURES"

Our Abpromise to you: Quality guaranteed and expert technical support

- Replacement or refund for products not performing as stated on the datasheet
- Valid for 12 months from date of delivery
- Response to your inquiry within 24 hours
- We provide support in Chinese, English, French, German, Japanese and Spanish
- Extensive multi-media technical resources to help you
- We investigate all quality concerns to ensure our products perform to the highest standards

If the product does not perform as described on this datasheet, we will offer a refund or replacement. For full details of the Abpromise, please visit <https://www.abcam.co.jp/abpromise> or contact our technical team.

Terms and conditions

- Guarantee only valid for products bought direct from Abcam or one of our authorized distributors