

### PE Anti-TRAP/CD40L antibody [MR1] ab25568

**1 References** [画像数 1](#)

#### 製品の概要

製品名	PE Anti-TRAP/CD40L antibody [MR1]
製品の詳細	PE Syrian hamster monoclonal [MR1] to TRAP/CD40L
由来種	Syrian hamster
標識	PE. Ex: 488nm, Em: 575nm
アプリケーション	<b>適用あり:</b> Flow Cyt
種交差性	<b>交差種:</b> Mouse
免疫原	Tissue, cells or virus corresponding to Mouse TRAP/CD40L. Activated mouse Th1 clone D1.6
特記事項	<p>ab25568 binds to murine CD40L with high affinity, blocks binding to CD40, and blocks CD40L function. Administration of this antibody to mice blocks the ability to mount primary and secondary immune responses to TD antigens, yet does not alter the immune response to TI antigens.</p> <p>The Life Science industry has been in the grips of a reproducibility crisis for a number of years. Abcam is leading the way in addressing this with our range of recombinant monoclonal antibodies and knockout edited cell lines for gold-standard validation. Please check that this product meets your needs before purchasing.</p> <p>If you have any questions, special requirements or concerns, please send us an inquiry and/or contact our Support team ahead of purchase. Recommended alternatives for this product can be found below, along with publications, customer reviews and Q&amp;As</p>

#### 製品の特性

製品の状態	Liquid
保存方法	Shipped at 4°C. Store at +4°C.
バッファー	<p>pH: 7.20</p> <p>Preservative: 0.09% Sodium azide</p> <p>Constituents: 0.14% Monobasic dihydrogen sodium phosphate, 0.87% Sodium chloride, 0.1% Gelatin</p> <p>Also contains a stabilizing agent.</p>
精製度	Affinity purified
一次抗体 備考	ab25568 binds to murine CD40L with high affinity, blocks binding to CD40, and blocks CD40L

function. Administration of this antibody to mice blocks the ability to mount primary and secondary immune responses to TD antigens, yet does not alter the immune response to TI antigens.

ポリ/モノ	モノクローナル
クローン名	MR1
アイソタイプ	IgG
軽鎖の種類	kappa

## アプリケーション

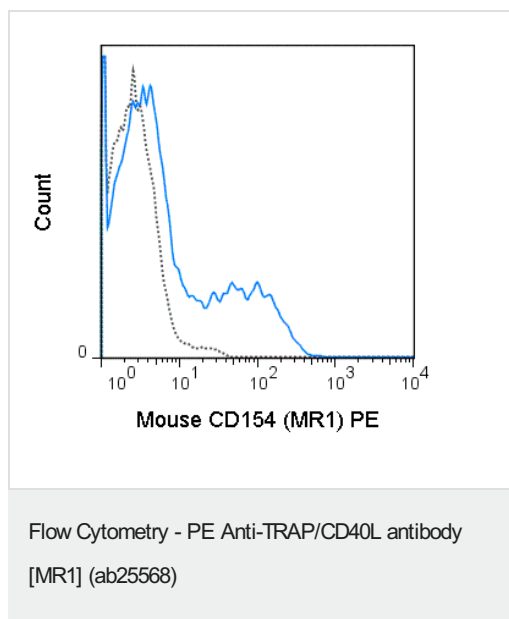
**The Abpromise guarantee**      **Abpromise保証は、** 次のテスト済みアプリケーションにおけるab25568の使用に適用されます  
アプリケーションノートには、推奨の開始希釈率がありますが、適切な希釈率につきましてはご確認ください。

アプリケーション	Abreviews	特記事項
Flow Cyt		Use at an assay dependent concentration.

## ターゲット情報

機能	Mediates B-cell proliferation in the absence of co-stimulus as well as IgE production in the presence of IL-4. Involved in immunoglobulin class switching. Release of soluble CD40L from platelets is partially regulated by GP IIb/IIIa, actin polymerization, and an matrix metalloproteinases (MMP) inhibitor-sensitive pathway.
組織特異性	Specifically expressed on activated CD4+ T-lymphocytes.
関連疾患	Defects in CD40LG are the cause of X-linked immunodeficiency with hyper-IgM type 1 (HIGM1) [MIM:308230]; also known as X-linked hyper IgM syndrome (XHIM). HIGM1 is an immunoglobulin isotype switch defect characterized by elevated concentrations of serum IgM and decreased amounts of all other isotypes. Affected males present at an early age (usually within the first year of life) recurrent bacterial and opportunistic infections, including Pneumocystis carinii pneumonia and intractable diarrhea due to cryptosporidium infection. Despite substitution treatment with intravenous immunoglobulin, the overall prognosis is rather poor, with a death rate of about 10% before adolescence.
配列類似性	Belongs to the tumor necrosis factor family.
翻訳後修飾	The soluble form derives from the membrane form by proteolytic processing. N-linked glycan is a mixture of high mannose and complex type. Glycan structure does not influence binding affinity to CD40. Not O-glycosylated.
細胞内局在	Secreted and Cell membrane.

## 画像



Flow cytometry of C57Bl/6 T cells labeling TRAP/CD40L with ab25568 at 0.06µg (solid line), or Armenian Hamster IgG isotype control at 0.06µg (dashed line).

**Please note:** All products are "FOR RESEARCH USE ONLY. NOT FOR USE IN DIAGNOSTIC PROCEDURES"

### Our Abpromise to you: Quality guaranteed and expert technical support

- Replacement or refund for products not performing as stated on the datasheet
- Valid for 12 months from date of delivery
- Response to your inquiry within 24 hours
- We provide support in Chinese, English, French, German, Japanese and Spanish
- Extensive multi-media technical resources to help you
- We investigate all quality concerns to ensure our products perform to the highest standards

If the product does not perform as described on this datasheet, we will offer a refund or replacement. For full details of the Abpromise, please visit <https://www.abcam.co.jp/abpromise> or contact our technical team.

### Terms and conditions

- Guarantee only valid for products bought direct from Abcam or one of our authorized distributors