

### PE Anti-PD1 antibody [NAT105] ab220302

画像数 1

#### 製品の概要

製品名	PE Anti-PD1 antibody [NAT105]
製品の詳細	PE Mouse monoclonal [NAT105] to PD1
由来種	Mouse
標識	PE. Ex: 488nm, Em: 575nm
アプリケーション	<b>適用あり:</b> Flow Cyt
種交差性	<b>交差種:</b> Human
免疫原	Tissue, cells or virus corresponding to Human PD1. YT cells (human T/NK cell Leukemia) Database link: <a href="#">Q15116</a>
ポジティブ・コントロール	Flow Cyt: Molt-4 cells
特記事項	<p>The Life Science industry has been in the grips of a reproducibility crisis for a number of years. Abcam is leading the way in addressing this with our range of recombinant monoclonal antibodies and knockout edited cell lines for gold-standard validation. Please check that this product meets your needs before purchasing.</p> <p>If you have any questions, special requirements or concerns, please send us an inquiry and/or contact our Support team ahead of purchase. Recommended alternatives for this product can be found below, along with publications, customer reviews and Q&amp;As</p>

#### 製品の特性

製品の状態	Liquid
保存方法	Shipped at 4°C. Upon delivery aliquot. Store at +4°C. Do Not Freeze. Store In the Dark.
バッファー	pH: 7.4 Preservative: 0.02% Sodium azide Constituents: PBS, 1% BSA
精製度	Protein G purified
ポリ/モノ	モノクローナル
クローン名	NAT105
アイソタイプ	IgG1
軽鎖の種類	kappa

## アプリケーション

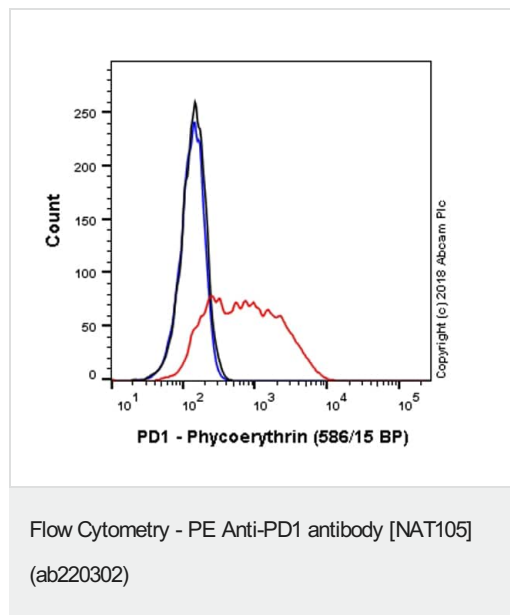
**The Abpromise guarantee**      **Abpromise保証は、次のテスト済みアプリケーションにおけるab220302の使用に適用されます**  
アプリケーションノートには、推奨の開始希釈率がありますが、適切な希釈率につきましてはご確認ください。

アプリケーション	Abreviews	特記事項
Flow Cyt		1/50. The cellular localisation of this product has been verified in ICC/IF

## ターゲット情報

機能	Possible cell death inducer, in association with other factors.
関連疾患	Genetic variation in PDCD1 is associated with susceptibility to systemic lupus erythematosus type 2 (SLEB2) [MIM:605218]. Systemic lupus erythematosus is a chronic, inflammatory and often febrile multisystemic disorder of connective tissue. It affects principally the skin, joints, kidneys and serosal membranes. It is thought to represent a failure of the regulatory mechanisms of the autoimmune system.
配列類似性	Contains 1 Ig-like V-type (immunoglobulin-like) domain.
発生段階	Induced at programmed cell death.
細胞内局在	Membrane.

## 画像



Overlay histogram showing Molt-4 cells stained with ab220302 (red line). The cells were then incubated in 1x PBS / 10% normal goat serum to block non-specific protein-protein interactions followed by the antibody (ab220302, 1/50 dilution) for 30 min at 22°C.

Isotype control antibody (black line) was Rabbit IgG (monoclonal) Phycoerythrin ([ab209478](#)) used at the same concentration and conditions as the primary antibody. Unlabelled sample (blue line) was also used as a control.

Acquisition of >5,000 events were collected using a 50 mW Yellow/Green laser (561nm) and 586/15 bandpass filter.

**Please note:** All products are "FOR RESEARCH USE ONLY. NOT FOR USE IN DIAGNOSTIC PROCEDURES"

**Our Abpromise to you: Quality guaranteed and expert technical support**

- Replacement or refund for products not performing as stated on the datasheet
- Valid for 12 months from date of delivery
- Response to your inquiry within 24 hours
- We provide support in Chinese, English, French, German, Japanese and Spanish
- Extensive multi-media technical resources to help you
- We investigate all quality concerns to ensure our products perform to the highest standards

If the product does not perform as described on this datasheet, we will offer a refund or replacement. For full details of the Abpromise, please visit <https://www.abcam.co.jp/abpromise> or contact our technical team.

#### **Terms and conditions**

---

- Guarantee only valid for products bought direct from Abcam or one of our authorized distributors