

# PE Anti-PD-L1 antibody [28-8] ab209962

リコンビナント RabMAb<sup>®</sup>

## 1 References [画像数 2](#)

### 製品の概要

製品名	PE Anti-PD-L1 antibody [28-8]
製品の詳細	PE Rabbit monoclonal [28-8] to PD-L1
由来種	Rabbit
標識	PE. Ex: 488nm, Em: 575nm
アプリケーション	<b>適用あり:</b> Flow Cyt
種交差性	<b>交差種:</b> Human
免疫原	Fusion protein. This information is proprietary to Abcam and/or its suppliers.
ポジティブ・コントロール	Flow Cyt: CHO-PDL1 cells
特記事項	<p>Anti-PD-L1 antibody [28-8] has been used as detector antibody in <b>Human PD-L1 SimpleStep ELISA<sup>®</sup> kit (ab214565)</b>.</p> <p><b>Additional information on positive controls:</b></p> <p><u>Cell Lines:</u> Positives: B-CPAP- high, ES-2- medium, HCC70 - low</p> <p><b>For primary negative control, isotype control, RabMAb negative control antibody (ab172730)</b> is recommended.</p> <p><b>For negative control sample</b>, cell line COLO205 is recommended.</p> <p><b>For PD-L1 protein</b>, see <a href="#">ab167713</a>.</p> <p><b>Recommended protocols:</b></p> <p>For recommended Flow Cytometry (Flow Cyt) protocol, please refer to the protocol book (line 1) in the protocol section and/or <a href="#">here (downloadable copy)</a></p> <p>This product is a recombinant monoclonal antibody, which offers several advantages including:</p> <ul style="list-style-type: none"><li>- High batch-to-batch consistency and reproducibility</li><li>- Improved sensitivity and specificity</li><li>- Long-term security of supply</li><li>- Animal-free production</li></ul> <p>For more information <a href="#">see here</a>.</p> <p>Our RabMAb<sup>®</sup> technology is a patented hybridoma-based technology for making rabbit monoclonal antibodies. For details on our patents, please refer to <a href="#">RabMAb<sup>®</sup> patents</a>.</p>

## 製品の特性

製品の状態	Liquid
保存方法	Shipped at 4°C. Upon delivery aliquot. Store at +4°C. Do Not Freeze. Store In the Dark.
バッファー	pH: 7.4 Preservative: 0.02% Sodium azide Constituents: 1% BSA, PBS
精製度	Protein A purified
ポリ/モノ	モノクローナル
クローン名	28-8
アイソタイプ	IgG

## アプリケーション

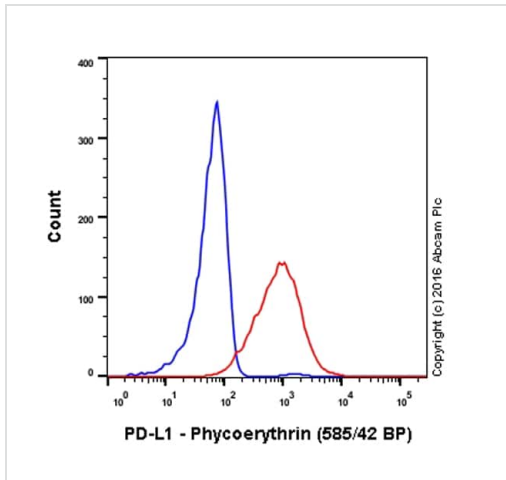
The Abpromise guarantee **Abpromise保証は、次のテスト済みアプリケーションにおけるab209962の使用に適用されず**  
アプリケーションノートには、推奨の開始希釈率がありますが、適切な希釈率につきましてはご検討ください。

アプリケーション	Abreviews	特記事項
Flow Cyt		1/100. <b>ab209478</b> - Rabbit monoclonal IgG, is suitable for use as an isotype control with this antibody. The cellular localisation of this product has been verified in ICC/IF.

## ターゲット情報

機能	Involved in the costimulatory signal, essential for T-cell proliferation and production of IL10 and IFNG, in an IL2-dependent and a PDCD1-independent manner. Interaction with PDCD1 inhibits T-cell proliferation and cytokine production.
組織特異性	Highly expressed in the heart, skeletal muscle, placenta and lung. Weakly expressed in the thymus, spleen, kidney and liver. Expressed on activated T- and B-cells, dendritic cells, keratinocytes and monocytes.
配列類似性	Belongs to the immunoglobulin superfamily. BTN/MOG family. Contains 1 Ig-like C2-type (immunoglobulin-like) domain. Contains 1 Ig-like V-type (immunoglobulin-like) domain.
細胞内局在	Cell membrane and Endomembrane system.

## 画像







Overlay histogram showing CHO (blue line) and CHO-PD-L1 transfected (red line) cells stained with ab209962.

The cells were incubated in 1x PBS / 10% normal goat serum to block non-specific protein-protein interactions followed by the antibody (ab209962, 1/100 dilution) for 30 min at 4°C.

Acquisition of >5,000 events were collected using a 20 mW Solid State Blue Laser (488nm) and 585/42 bandpass filter.

Flow Cytometry - PE Anti-PD-L1 antibody [28-8] (ab209962)

Why choose a recombinant antibody?

 <b>Research with confidence</b> Consistent and reproducible results	 <b>Long-term and scalable supply</b> Recombinant technology
 <b>Success from the first experiment</b> Confirmed specificity	 <b>Ethical standards compliant</b> Animal-free production

PE Anti-PD-L1 antibody [28-8] (ab209962)

**Please note:** All products are "FOR RESEARCH USE ONLY. NOT FOR USE IN DIAGNOSTIC PROCEDURES"

### Our Abpromise to you: Quality guaranteed and expert technical support

- Replacement or refund for products not performing as stated on the datasheet
- Valid for 12 months from date of delivery
- Response to your inquiry within 24 hours
- We provide support in Chinese, English, French, German, Japanese and Spanish
- Extensive multi-media technical resources to help you
- We investigate all quality concerns to ensure our products perform to the highest standards

If the product does not perform as described on this datasheet, we will offer a refund or replacement. For full details of the Abpromise, please visit <https://www.abcam.co.jp/abpromise> or contact our technical team.

## Terms and conditions

---

- Guarantee only valid for products bought direct from Abcam or one of our authorized distributors