

PE Anti-pan Cytokeratin antibody [C-11] ab52460

★★★★★ [2 Abreviews](#) [18 References](#) [画像数 1](#)

製品の概要

製品名	PE Anti-pan Cytokeratin antibody [C-11]
製品の詳細	PE Mouse monoclonal [C-11] to pan Cytokeratin
由来種	Mouse
標識	PE. Ex: 488nm, Em: 575nm
特異性	ab52460 recognises Cytokeratin peptides 4, 5, 6, 8, 10, 13, 18.
アプリケーション	適用あり: Flow Cyt (Intra)
種交差性	交差種: Human
免疫原	Tissue, cells or virus corresponding to Human pan Cytokeratin. Keratin-enriched preparation from human epidermoid carcinoma cell line A431
ポジティブ・コントロール	Flow Cyt (Intra): HT-29 cells
特記事項	<p>The Life Science industry has been in the grips of a reproducibility crisis for a number of years. Abcam is leading the way in addressing this with our range of recombinant monoclonal antibodies and knockout edited cell lines for gold-standard validation. Please check that this product meets your needs before purchasing.</p> <p>If you have any questions, special requirements or concerns, please send us an inquiry and/or contact our Support team ahead of purchase. Recommended alternatives for this product can be found below, along with publications, customer reviews and Q&As</p>

製品の特性

製品の状態	Liquid
保存方法	Shipped at 4°C. Store at +4°C.
バッファー	pH: 7.4 Preservative: 0.097% Sodium azide Constituents: 0.2% BSA, PBS
精製度	Protein A purified
特記事項 (精製)	Prior to conjugation, this antibody was purified by Protein A affinity chromatography. The purified antibody is conjugated with R-Phycoerythrin (PE) under optimum conditions. The conjugate is purified by size-exclusion chromatography. Purity >95% by SDS-PAGE.
ポリ/モノ	モノクローナル

クローン名 C-11
アイソタイプ IgG1

アプリケーション

The Abpromise guarantee **Abpromise保証は、次のテスト済みアプリケーションにおけるab52460の使用に適用されます**
アプリケーションノートには、推奨の開始希釈率がありますが、適切な希釈率につきましてはご検討ください。

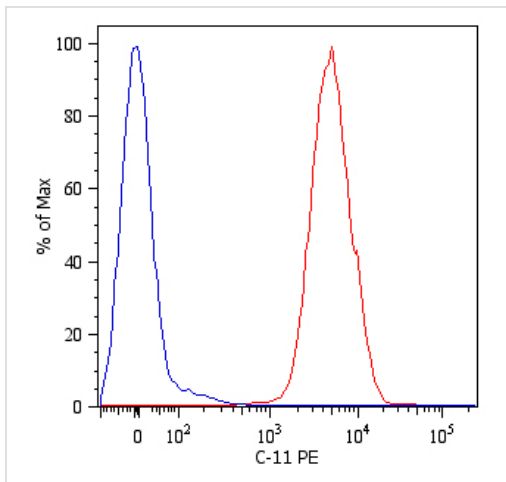
アプリケーション	Abreviews	特記事項
Flow Cyt (Intra)		Use a concentration of 1 µg/ml. ab91357 - Mouse monoclonal IgG1, is suitable for use as an isotype control with this antibody.

ターゲット情報

関連性 Cytokeratins, a group comprising at least 29 different proteins, are characteristic of epithelial and trichocytic cells. Cytokeratins 1, 4, 5, 6, and 8 are members of the type II neutral to basic subfamily. Monoclonal anti cytokeratins are specific markers of epithelial cell differentiation and have been widely used as tools in tumor identification and classification. Monoclonal Anti Pan Cytokeratin is a broadly reactive reagent, which recognizes epitopes present in most human epithelial tissues. It facilitates typing of normal, metaplastic and neoplastic cells. Synergy between the various components results in staining amplification. This enables identification of cells, which would otherwise be stained only marginally. The mixture may aid in the discrimination of carcinomas and nonepithelial tumors such as sarcomas, lymphomas and neural tumors. It is also useful in detecting micrometastases in lymph nodes, bone marrow and other tissues and for determining the origin of poorly differentiated tumors. There are two types of cytokeratins the acidic type I cytokeratins and the basic or neutral type II cytokeratins. Cytokeratins are usually found in pairs comprising a type I cytokeratin and a type II cytokeratin. Usually the type II cytokeratins are 8kD larger than their type I counterparts.

細胞内局在 Cytoplasmic

画像



Flow Cytometry (Intracellular) - PE Anti-pan
Cytokeratin antibody [C-11] (ab52460)

Intracellular Flow Cytometry analysis of cytokeratin expression in HT-29 human Caucasian colon adenocarcinoma cell line using ab52460.

Recommended conc. 0.5 µg/ml

Overlay with Isotype mouse IgG1 control.

Please note: All products are "FOR RESEARCH USE ONLY. NOT FOR USE IN DIAGNOSTIC PROCEDURES"

Our Abpromise to you: Quality guaranteed and expert technical support

- Replacement or refund for products not performing as stated on the datasheet
- Valid for 12 months from date of delivery
- Response to your inquiry within 24 hours
- We provide support in Chinese, English, French, German, Japanese and Spanish
- Extensive multi-media technical resources to help you
- We investigate all quality concerns to ensure our products perform to the highest standards

If the product does not perform as described on this datasheet, we will offer a refund or replacement. For full details of the Abpromise, please visit <https://www.abcam.co.jp/abpromise> or contact our technical team.

Terms and conditions

- Guarantee only valid for products bought direct from Abcam or one of our authorized distributors