

PE Anti-OX40L/TNFSF4 antibody [RM134L] ab95656

3 References [画像数 1](#)

製品の概要

製品名	PE Anti-OX40L/TNFSF4 antibody [RM134L]
製品の詳細	PE Rat monoclonal [RM134L] to OX40L/TNFSF4
由来種	Rat
標識	PE. Ex: 488nm, Em: 575nm
アプリケーション	適用あり: Flow Cyt
種交差性	交差種: Mouse
免疫原	Full length protein corresponding to Mouse OX40L/TNFSF4. Native protein
ポジティブ・コントロール	Anti-Mouse IgM and Anti-Mouse CD40 stimulated Mouse BALB/c splenocytes
特記事項	<p>The RM134L monoclonal antibody inhibits the costimulatory activity of Mouse CD252 transfected cells for anti-CD3-stimulated T cell proliferation.</p> <p>The Life Science industry has been in the grips of a reproducibility crisis for a number of years. Abcam is leading the way in addressing this with our range of recombinant monoclonal antibodies and knockout edited cell lines for gold-standard validation. Please check that this product meets your needs before purchasing.</p> <p>If you have any questions, special requirements or concerns, please send us an inquiry and/or contact our Support team ahead of purchase. Recommended alternatives for this product can be found below, along with publications, customer reviews and Q&As</p>

製品の特性

製品の状態	Liquid
保存方法	Shipped at 4°C. Store at +4°C.
バッファー	<p>pH: 7.20</p> <p>Preservative: 0.09% Sodium azide</p> <p>Constituents: 0.87% Sodium chloride, PBS</p>
精製度	Protein G purified
一次抗体 備考	The RM134L monoclonal antibody inhibits the costimulatory activity of Mouse CD252 transfected cells for anti-CD3-stimulated T cell proliferation.
ポリ/モノ	モノクローナル

クローン名	RM134L
アイソタイプ	IgG2b
軽鎖の種類	kappa

アプリケーション

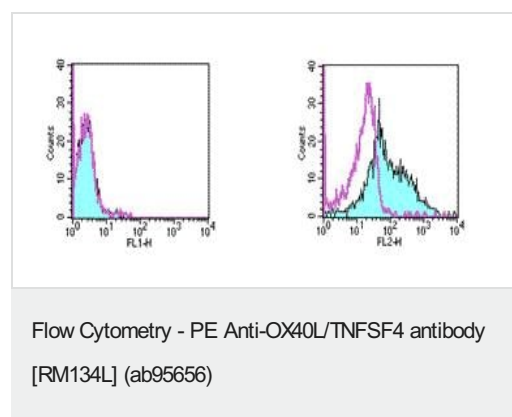
The Abpromise guarantee Abpromise保証は、 次のテスト済みアプリケーションにおけるab95656の使用に適用されます
アプリケーションノートには、推奨の開始希釈率がありますが、適切な希釈率につきましてはご確認ください。

アプリケーション	Abreviews	特記事項
Flow Cyt		Use 0.25-0.5µg for 10 ⁵⁻⁸ cells. Staining the cell sample in a final volume of 100 µl is recommended.

ターゲット情報

機能	Cytokine that binds to TNFRSF4. Co-stimulates T-cell proliferation and cytokine production.
関連疾患	Genetic variations in TNFSF4 influence susceptibility to systemic lupus erythematosus (SLE) [MIM:152700]. SLE is a chronic, inflammatory and often febrile multisystemic disorder of connective tissue. It affects principally the skin, joints, kidneys and serosal membranes. It is thought to represent a failure of the regulatory mechanisms of the autoimmune system. Note=The upstream region of TNFSF4 contains a single risk haplotype for SLE, which is correlated with increased expression of both cell-surface TNFSF4 and TNFSF4 transcripts. Increased levels of TNFSF4 are thought to augment T cell-APC interaction and the functional consequences of T cell activation, thereby destabilizing peripheral tolerance.
配列類似性	Belongs to the tumor necrosis factor family.
細胞内局在	Membrane.

画像



Flow cytometry staining of 3-day unstimulated (left) and 3-day Anti-Mouse IgM and Anti-Mouse CD40 stimulated (right) BALB/c splenocytes with 0.25 µg of Rat IgG2b Isotype Control PE (open histogram) or 0.25 µg of ab95656 (filled histogram). Total viable cells were used for analysis.

Please note: All products are "FOR RESEARCH USE ONLY. NOT FOR USE IN DIAGNOSTIC PROCEDURES"

Our Abpromise to you: Quality guaranteed and expert technical support

- Replacement or refund for products not performing as stated on the datasheet
- Valid for 12 months from date of delivery
- Response to your inquiry within 24 hours

- We provide support in Chinese, English, French, German, Japanese and Spanish
- Extensive multi-media technical resources to help you
- We investigate all quality concerns to ensure our products perform to the highest standards

If the product does not perform as described on this datasheet, we will offer a refund or replacement. For full details of the Abpromise, please visit <https://www.abcam.co.jp/abpromise> or contact our technical team.

Terms and conditions

- Guarantee only valid for products bought direct from Abcam or one of our authorized distributors