

PE Anti-MHC Class II antibody [M5/114.15.2] ab93560

★★★★★ [1 Abreviews](#) [6 References](#) [画像数 1](#)

製品の概要

製品名	PE Anti-MHC Class II antibody [M5/114.15.2]
製品の詳細	PE Rat monoclonal [M5/114.15.2] to MHC Class II
由来種	Rat
標識	PE. Ex: 488nm, Em: 575nm
特異性	The M5/114.15.2 monoclonal antibody reacts with the mouse major histocompatibility complex class II, both I-A and I-E subregion encoded glycoproteins (I-A ^b , I-A ^d , I-A ^q , I-E ^d , I-E ^k , not I-A ^f , I-A ^k , or I-A ^s). It detects a polymorphic determinant present on B cells, monocytes, macrophages, dendritic cells, and activated T lymphocytes from mice carrying the H-2 ^b , H-2 ^d , H-2 ^q , H-2 ^p , H-2 ^r and H-2 ^u but not from mice carrying the H-2 ^s or H-2 ^f haplotypes. The M5/114 mnonclonal antibody is reported to inhibit I-A-restricted T cell responses of the H-2 ^b , H-2 ^d , H-2 ^q , H-2 ^u but not H-2 ^f , H-2 ^k , or H-2 ^s haplotypes.
アプリケーション	適用あり: Flow Cyt
種交差性	交差種: Mouse
免疫原	Tissue/ cell preparation (Mouse): Activated C57BL/6 Mouse spleen cells.
ポジティブ・コントロール	C57Bl/6 Mouse splenocytes
特記事項	<p>The Life Science industry has been in the grips of a reproducibility crisis for a number of years. Abcam is leading the way in addressing this with our range of recombinant monoclonal antibodies and knockout edited cell lines for gold-standard validation. Please check that this product meets your needs before purchasing.</p> <p>If you have any questions, special requirements or concerns, please send us an inquiry and/or contact our Support team ahead of purchase. Recommended alternatives for this product can be found below, along with publications, customer reviews and Q&As</p>

製品の特性

製品の状態	Liquid
保存方法	Shipped at 4°C. Store at +4°C.
バッファー	pH: 7.20 Preservative: 0.09% Sodium azide Constituents: 0.87% Sodium chloride, 0.16% Sodium phosphate, 0.1% Gelatin
精製度	Protein G purified

ポリ/モノ	モノクローナル
クローン名	M5/114.15.2
アイソタイプ	IgG2b
軽鎖の種類	kappa

アプリケーション

The Abpromise guarantee Abpromise保証は、次のテスト済みアプリケーションにおけるab93560の使用に適用されます

アプリケーションノートには、推奨の開始希釈率がありますが、適切な希釈率につきましてはご検討ください。

アプリケーション	Abreviews	特記事項
Flow Cyt	★★★★★ (1)	

追加情報 Flow Cyt: Use at a concentration of 0.0075 - 0.02 µg/test in a 100 µl volume.

Not yet tested in other applications.

Optimal dilutions/concentrations should be determined by the end user.

ターゲット情報

機能

Binds peptides derived from antigens that access the endocytic route of antigen presenting cells (APC) and presents them on the cell surface for recognition by the CD4 T-cells. The peptide binding cleft accommodates peptides of 10-30 residues. The peptides presented by MHC class II molecules are generated mostly by degradation of proteins that access the endocytic route, where they are processed by lysosomal proteases and other hydrolases. Exogenous antigens that have been endocytosed by the APC are thus readily available for presentation via MHC II molecules, and for this reason this antigen presentation pathway is usually referred to as exogenous. As membrane proteins on their way to degradation in lysosomes as part of their normal turn-over are also contained in the endosomal/lysosomal compartments, exogenous antigens must compete with those derived from endogenous components. Autophagy is also a source of endogenous peptides, autophagosomes constitutively fuse with MHC class II loading compartments. In addition to APCs, other cells of the gastrointestinal tract, such as epithelial cells, express MHC class II molecules and CD74 and act as APCs, which is an unusual trait of the GI tract. To produce a MHC class II molecule that presents an antigen, three MHC class II molecules (heterodimers of an alpha and a beta chain) associate with a CD74 trimer in the ER to form a heterononamer. Soon after the entry of this complex into the endosomal/lysosomal system where antigen processing occurs, CD74 undergoes a sequential degradation by various proteases, including CTSS and CTSL, leaving a small fragment termed CLIP (class-II-associated invariant chain peptide). The removal of CLIP is facilitated by HLA-DM via direct binding to the alpha-beta-CLIP complex so that CLIP is released. HLA-DM stabilizes MHC class II molecules until primary high affinity antigenic peptides are bound. The MHC II molecule bound to a peptide is then transported to the cell membrane surface. In B cells, the interaction between HLA-DM and MHC class II molecules is regulated by HLA-DO. Primary dendritic cells (DCs) also express HLA-DO. Lysosomal microenvironment has been implicated in the regulation of antigen loading into MHC II molecules, increased acidification produces increased proteolysis and efficient peptide loading.

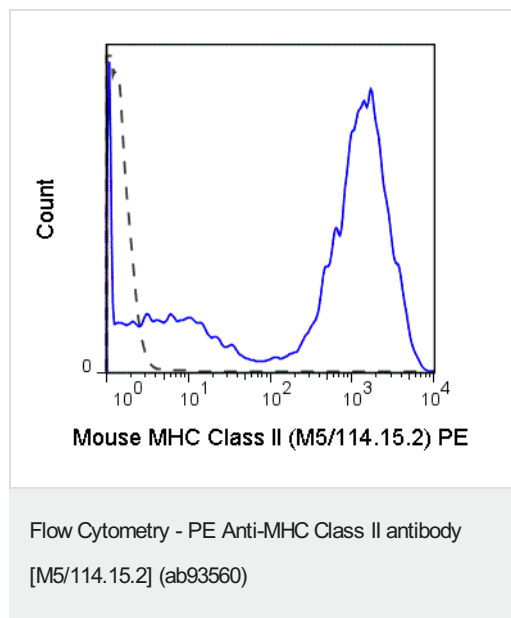
配列類似性 Belongs to the MHC class II family.

細胞内局在

Contains 1 Ig-like C1-type (immunoglobulin-like) domain.

Cell membrane. Endoplasmic reticulum membrane. Golgi apparatus > trans-Golgi network membrane. Endosome membrane. Lysosome membrane. The MHC class II complex transits through a number of intracellular compartments in the endocytic pathway until it reaches the cell membrane for antigen presentation.

画像



Flow cytometry analysis showing C57Bl/6 splenocytes stained with ab93560 (solid line). The isotype control was Rat IgG2b PE (dashed line).

Please note: All products are "FOR RESEARCH USE ONLY. NOT FOR USE IN DIAGNOSTIC PROCEDURES"

Our Abpromise to you: Quality guaranteed and expert technical support

- Replacement or refund for products not performing as stated on the datasheet
- Valid for 12 months from date of delivery
- Response to your inquiry within 24 hours
- We provide support in Chinese, English, French, German, Japanese and Spanish
- Extensive multi-media technical resources to help you
- We investigate all quality concerns to ensure our products perform to the highest standards

If the product does not perform as described on this datasheet, we will offer a refund or replacement. For full details of the Abpromise, please visit <https://www.abcam.co.jp/abpromise> or contact our technical team.

Terms and conditions

- Guarantee only valid for products bought direct from Abcam or one of our authorized distributors