


PE Anti-Integrin linked ILK antibody [EPR1592] ab211694

リコンビナント RabMAb[®]

画像数 2

製品の概要

| | |
|--------------|---|
| 製品名 | PE Anti-Integrin linked ILK antibody [EPR1592] |
| 製品の詳細 | PE Rabbit monoclonal [EPR1592] to Integrin linked ILK |
| 由来種 | Rabbit |
| 標識 | PE. Ex: 488nm, Em: 575nm |
| アプリケーション | 適用あり: Flow Cyt (Intra) |
| 種交差性 | 交差種: Human 交差が予測される動物種: Mouse, Rat  |
| 免疫原 | Synthetic peptide within Human Integrin linked ILK aa 1-100 (internal sequence). The exact immunogen sequence used to generate this antibody is proprietary information. If additional detail on the immunogen is needed to determine the suitability of the antibody for your needs, please contact our Scientific Support team to discuss your requirements. Database link: Q13418 |
| ポジティブ・コントロール | Flow Cyt (intra): A431 cells. |
| 特記事項 | This product is a recombinant monoclonal antibody, which offers several advantages including: <ul style="list-style-type: none">- High batch-to-batch consistency and reproducibility- Improved sensitivity and specificity- Long-term security of supply- Animal-free production For more information see here . Our RabMAb [®] technology is a patented hybridoma-based technology for making rabbit monoclonal antibodies. For details on our patents, please refer to RabMAb[®] patents . |

製品の特性

| | |
|-------|---|
| 製品の状態 | Liquid |
| 保存方法 | Shipped at 4°C. Upon delivery aliquot. Store at +4°C. Do Not Freeze. Store In the Dark. |
| バッファー | pH: 7.4 Preservative: 0.02% Sodium azide Constituents: 1% BSA, PBS |
| 精製度 | Protein A purified |

| | |
|---------|---------|
| ポリクローナル | モノクローナル |
| クローン名 | EPR1592 |
| アイソタイプ | IgG |

アプリケーション

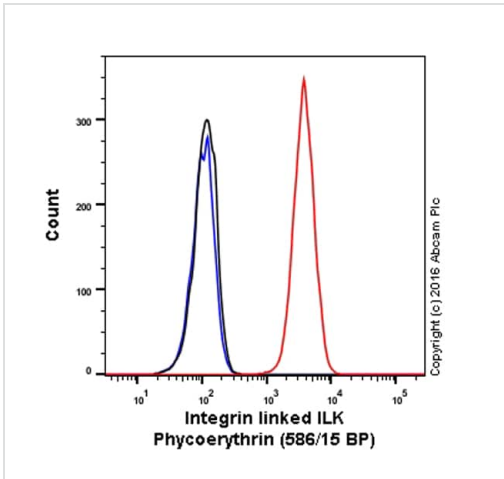
The Abpromise guarantee Abpromise保証は、次のテスト済みアプリケーションにおけるab211694の使用に適用されず
アプリケーションノートには、推奨の開始希釈率がありますが、適切な希釈率につきましてはご検討ください。

| アプリケーション | Abreviews | 特記事項 |
|------------------|-----------|--|
| Flow Cyt (Intra) | | 1/5000. The cellular localisation of this product has been verified in ICC/IF |

ターゲット情報

| | |
|-------|--|
| 機能 | Receptor-proximal protein kinase regulating integrin-mediated signal transduction. May act as a mediator of inside-out integrin signaling. Focal adhesion protein part of the complex ILK-PINCH. This complex is considered to be one of the convergence points of integrin- and growth factor-signaling pathway. Could be implicated in mediating cell architecture, adhesion to integrin substrates and anchorage-dependent growth in epithelial cells. Phosphorylates beta-1 and beta-3 integrin subunit on serine and threonine residues, but also AKT1 and GSK3B. |
| 組織特異性 | Highly expressed in heart followed by skeletal muscle, pancreas and kidney. Weakly expressed in placenta, lung and liver. |
| 配列類似性 | Belongs to the protein kinase superfamily. TKL Ser/Thr protein kinase family. Contains 5 ANK repeats. Contains 1 protein kinase domain. |
| ドメイン | A PH-like domain is involved in phosphatidylinositol phosphate binding. |
| 翻訳後修飾 | Autophosphorylated on serine residues. |
| 細胞内局在 | Cell junction > focal adhesion. Cell membrane. |

画像



Flow Cytometry (Intracellular) - PE Anti-Integrin linked ILK antibody [EPR1592] (ab211694)





Overlay histogram showing A431 cells stained with ab211694 (red line). The cells were fixed with 4% formaldehyde (10 min) and then permeabilized with 0.1% PBS-Triton X-100 for 15 min. The cells were then incubated in 1x PBS / 10% normal goat serum to block non-specific protein-protein interactions followed by the antibody (ab211694, 1/5000 dilution) for 30 min at 22°C.

Isotype control antibody (black line) was rabbit IgG (monoclonal) Phycoerythrin (**ab209478**) used at the same concentration and conditions as the primary antibody. Unlabelled sample (blue line) was also used as a control.

Acquisition of >5,000 events were collected using a 50 mW Yellow/Green laser (561nm) and 586/15 bandpass filter.

This antibody gave a positive signal in A431 cells fixed with 80% methanol (5 min)/permeabilized with 0.1% PBS-Triton X-100 for 15 min used under the same conditions.

Why choose a recombinant antibody?

| | |
|--|--|
|  <p>Research with confidence Consistent and reproducible results</p> |  <p>Long-term and scalable supply Recombinant technology</p> |
|  <p>Success from the first experiment Confirmed specificity</p> |  <p>Ethical standards compliant Animal-free production</p> |

PE Anti-Integrin linked ILK antibody [EPR1592] (ab211694)

Please note: All products are "FOR RESEARCH USE ONLY. NOT FOR USE IN DIAGNOSTIC PROCEDURES"

Our Abpromise to you: Quality guaranteed and expert technical support

- Replacement or refund for products not performing as stated on the datasheet
- Valid for 12 months from date of delivery
- Response to your inquiry within 24 hours

- We provide support in Chinese, English, French, German, Japanese and Spanish
- Extensive multi-media technical resources to help you
- We investigate all quality concerns to ensure our products perform to the highest standards

If the product does not perform as described on this datasheet, we will offer a refund or replacement. For full details of the Abpromise, please visit <https://www.abcam.co.jp/abpromise> or contact our technical team.

Terms and conditions

- Guarantee only valid for products bought direct from Abcam or one of our authorized distributors