

### PE Anti-HLA G antibody [MEM-G/9] ab24384

[11 References](#) [画像数 1](#)

#### 製品の概要

---

製品名	PE Anti-HLA G antibody [MEM-G/9]
製品の詳細	PE Mouse monoclonal [MEM-G/9] to HLA G
由来種	Mouse
標識	PE. Ex: 488nm, Em: 575nm
特異性	The antibody reacts with native form of human HLA-G1 on the cell surface as well as with soluble HLA-G5 isoform in its beta2-microglobulin associated form. We have data to indicate that this antibody may not cross react with Mouse. However, this has not been conclusively tested and expression levels may vary in certain cell lines/tissues.
アプリケーション	<b>適用あり:</b> Flow Cyt
種交差性	<b>交差種:</b> Recombinant fragment
免疫原	Recombinant full length protein (Human) refolded with beta2-microglobulin and peptide.
特記事項	<p>The purified antibody is conjugated with R-Phycoerythrin (PE) under optimum conditions. The conjugate is purified by size-exclusion chromatography.</p> <p>The Life Science industry has been in the grips of a reproducibility crisis for a number of years. Abcam is leading the way in addressing this with our range of recombinant monoclonal antibodies and knockout edited cell lines for gold-standard validation. Please check that this product meets your needs before purchasing.</p> <p>If you have any questions, special requirements or concerns, please send us an inquiry and/or contact our Support team ahead of purchase. Recommended alternatives for this product can be found below, along with publications, customer reviews and Q&amp;As</p>

#### 製品の特性

---

製品の状態	Liquid
保存方法	Shipped at 4°C. Store at +4°C.
バッファー	pH: 7.4 Preservative: 0.097% Sodium azide Constituents: PBS, 0.2% BSA
精製度	Protein A purified
ポリ/モノ	モノクローナル

クローン名 MEM-G/9  
 アイソタイプ IgG1

アプリケーション

**The Abpromise guarantee** **Abpromise保証は、次のテスト済みアプリケーションにおけるab24384の使用に適用されず**  
 アプリケーションノートには、推奨の開始希釈率がありますが、適切な希釈率につきましてはご検討ください。

アプリケーション	Abreviews	特記事項
Flow Cyt		Use a concentration of 1 - 4 µg/ml. Do not fix cells. <b>ab91357</b> - Mouse monoclonal IgG1, is suitable for use as an isotype control with this antibody.

ターゲット情報

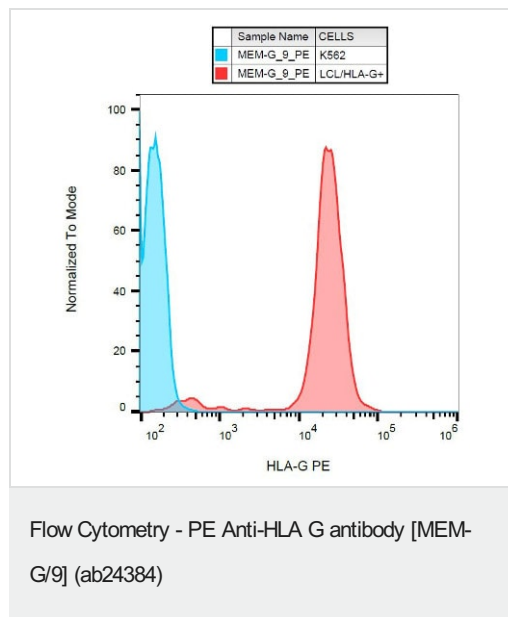
**機能** Involved in the presentation of foreign antigens to the immune system. Plays a role in maternal tolerance of the fetus by mediating protection from the deleterious effects of natural killer cells, cytotoxic T lymphocytes, macrophages and mononuclear cells.

**組織特異性** Expressed in trophoblasts.

**配列類似性** Belongs to the MHC class I family.  
Contains 1 Ig-like C1-type (immunoglobulin-like) domain.

**細胞内局在** Membrane.

画像



Surface staining of HLA-G1 transfectants (LCL-HLA-G1) using anti-HLA-G (MEM-G/9) PE.

**Please note:** All products are "FOR RESEARCH USE ONLY. NOT FOR USE IN DIAGNOSTIC PROCEDURES"

## **Our Abpromise to you: Quality guaranteed and expert technical support**

---

- Replacement or refund for products not performing as stated on the datasheet
- Valid for 12 months from date of delivery
- Response to your inquiry within 24 hours
  
- We provide support in Chinese, English, French, German, Japanese and Spanish
- Extensive multi-media technical resources to help you
- We investigate all quality concerns to ensure our products perform to the highest standards

If the product does not perform as described on this datasheet, we will offer a refund or replacement. For full details of the Abpromise, please visit <https://www.abcam.co.jp/abpromise> or contact our technical team.

## **Terms and conditions**

---

- Guarantee only valid for products bought direct from Abcam or one of our authorized distributors