


PE Anti-Estrogen Receptor alpha antibody [E115] ab209288

リコンビナント RabMAb[®]

★★★★★ **3 Abreviews** **2 References** **画像数 5**

製品の概要

製品名	PE Anti-Estrogen Receptor alpha antibody [E115]
製品の詳細	PE Rabbit monoclonal [E115] to Estrogen Receptor alpha
由来種	Rabbit
標識	PE. Ex: 488nm, Em: 575nm
特異性	Expression levels of ER alpha protein vary with sample type.
アプリケーション	適用あり: Flow Cyt (Intra), ICC/IF 適用なし: IHC-P
種交差性	交差種: Mouse, Rat, Human 交差が予測される動物種: Dog 
免疫原	Synthetic peptide. This information is proprietary to Abcam and/or its suppliers.
ポジティブ・コントロール	Flow Cyt (Intra): T47D, 4T1 and GH3 cells. ICC/IF: T47D cells.
特記事項	This product is a recombinant monoclonal antibody, which offers several advantages including: <ul style="list-style-type: none">- High batch-to-batch consistency and reproducibility- Improved sensitivity and specificity- Long-term security of supply- Animal-free production For more information see here . Our RabMAb [®] technology is a patented hybridoma-based technology for making rabbit monoclonal antibodies. For details on our patents, please refer to RabMAb[®] patents .

製品の特性

製品の状態	Liquid
保存方法	Shipped at 4°C. Upon delivery aliquot. Store at +4°C. Do Not Freeze. Store In the Dark.
バッファー	pH: 7.4 Preservative: 0.02% Sodium azide Constituents: PBS, 1% BSA
精製度	Protein A purified
ポリ/モノ	モノクローナル

クローン名 E115
アイソタイプ IgG

アプリケーション

The Abpromise guarantee **Abpromise保証は、次のテスト済みアプリケーションにおけるab209288の使用に適用されず**
アプリケーションノートには、推奨の開始希釈率がありますが、適切な希釈率につきましてはご検討ください。

アプリケーション	Abreviews	特記事項
Flow Cyt (Intra)		1/50 - 1/2500.
ICC/IF		1/500. This product gave a positive signal in T47D cells fixed with 4% formaldehyde (10 min)

追加情報 Is unsuitable for IHC-P.

ターゲット情報

機能 Nuclear hormone receptor. The steroid hormones and their receptors are involved in the regulation of eukaryotic gene expression and affect cellular proliferation and differentiation in target tissues. Can activate the transcriptional activity of TFF1.

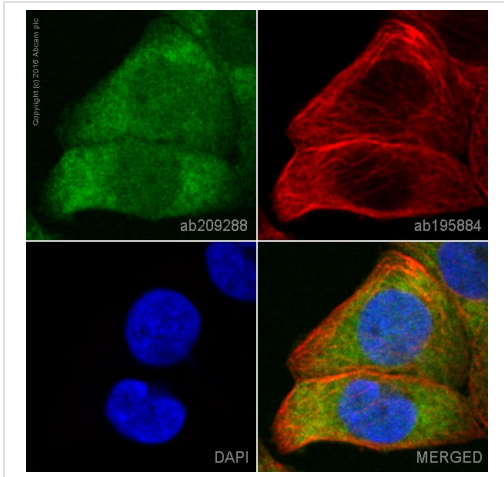
配列類似性 Belongs to the nuclear hormone receptor family. NR3 subfamily.
Contains 1 nuclear receptor DNA-binding domain.

ドメイン Composed of three domains: a modulating N-terminal domain, a DNA-binding domain and a C-terminal ligand-binding domain.

翻訳後修飾 Phosphorylated by cyclin A/CDK2. Phosphorylation probably enhances transcriptional activity.
Glycosylated; contains N-acetylglucosamine, probably O-linked.
Ubiquitinated. Deubiquitinated by OTUB1.
Dimethylated by PRMT1 at Arg-260. The methylation may favor cytoplasmic localization.
Palmitoylated (isoform 3). Not biotinylated (isoform 3).

細胞内局在 Nucleus. Cytoplasm. Cell membrane. A minor fraction is associated with the inner membrane and Nucleus. Cytoplasm. Cell membrane. Associated with the inner membrane via palmitoylation.

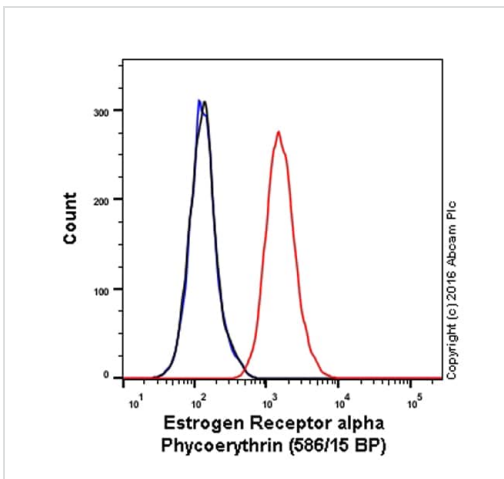
画像



Immunocytochemistry/ Immunofluorescence - PE
 Anti-Estrogen Receptor alpha antibody [E115]
 (ab209288)

ab209288 staining Estrogen Receptor alpha in T47D cells. The cells were fixed with 4% formaldehyde (10 min), permeabilized with 0.1% Triton X-100 for 5 minutes and then blocked with 1% BSA/10% normal goat serum/0.3M glycine in 0.1% PBS-Tween for 1h. The cells were then incubated overnight at +4°C with ab209288 at 1/500 dilution (Pseudocolored in green) and **ab195884**, Rat monoclonal to Tubulin (Alexa Fluor® 647), at 1/250 dilution (shown in red). Nuclear DNA was labelled with DAPI (shown in blue).

Image was taken with a confocal microscope (Leica-Microsystems, TCS SP8).

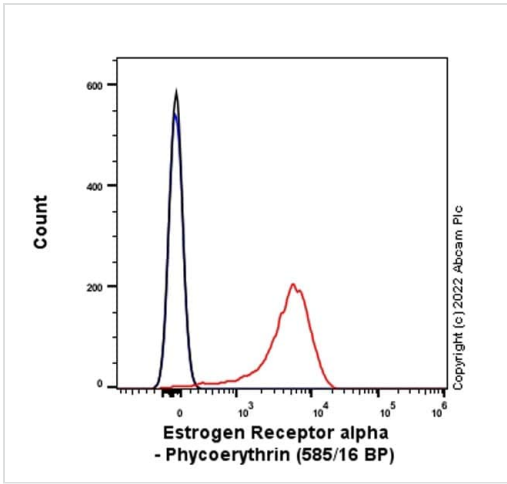


Flow Cytometry (Intracellular) - PE Anti-Estrogen Receptor alpha antibody [E115] (ab209288)

Overlay histogram showing T47D cells stained with ab209288 (red line). The cells were fixed with 4% formaldehyde (10 min) and then permeabilized with 90% methanol for 30 min at -20°C. The cells were then incubated in 1x PBS / 10% normal goat serum to block non-specific protein-protein interactions followed by the antibody (ab209288, 1/2500 dilution) for 30 min at 22°C.

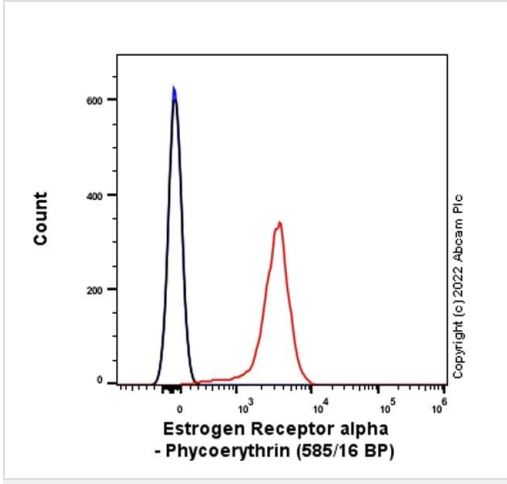
Isotype control antibody (black line) was rabbit IgG (monoclonal) Phycoerythrin (**ab209478**) used at the same concentration and conditions as the primary antibody. Unlabelled sample (blue line) was also used as a control.

Acquisition of >5,000 events were collected using a 50 mW Yellow/Green laser (561nm) and 586/15 bandpass filter.



Flow Cytometry (Intracellular) - PE Anti-Estrogen Receptor alpha antibody [E115] (ab209288)

Intracellular Flow Cytometry analysis of 4T1 (mouse mammary gland carcinoma epithelial cell) cells labeling Estrogen Receptor alpha with ab209288 at 1/50 dilution (Red). Cells were fixed with 4% Paraformaldehyde and permeabilised with 90% Methanol. Isotype control - Rabbit IgG monoclonal [EPR25A, [ab209478](#)] (Black). Unlabeled control - Cell without incubation with primary antibody and secondary antibody (Blue).



Flow Cytometry (Intracellular) - PE Anti-Estrogen Receptor alpha antibody [E115] (ab209288)

Intracellular Flow Cytometry analysis of GH3 (rat pituitary epithelial) cells labeling Estrogen Receptor alpha with ab209288 at 1/50 dilution (Red). Cells were fixed with 4% Paraformaldehyde and permeabilised with 90% Methanol. Isotype control - Rabbit IgG monoclonal [EPR25A, [ab209478](#)] (Black). Unlabeled control - Cell without incubation with primary antibody and secondary antibody (Blue).

Why choose a recombinant antibody?



Research with confidence
Consistent and reproducible results



Long-term and scalable supply
Recombinant technology



Success from the first experiment
Confirmed specificity



Ethical standards compliant
Animal-free production

PE Anti-Estrogen Receptor alpha antibody [E115]
(ab209288)

Please note: All products are "FOR RESEARCH USE ONLY. NOT FOR USE IN DIAGNOSTIC PROCEDURES"

Our Abpromise to you: Quality guaranteed and expert technical support

- Replacement or refund for products not performing as stated on the datasheet
- Valid for 12 months from date of delivery
- Response to your inquiry within 24 hours
- We provide support in Chinese, English, French, German, Japanese and Spanish
- Extensive multi-media technical resources to help you
- We investigate all quality concerns to ensure our products perform to the highest standards

If the product does not perform as described on this datasheet, we will offer a refund or replacement. For full details of the Abpromise, please visit <https://www.abcam.co.jp/abpromise> or contact our technical team.

Terms and conditions

- Guarantee only valid for products bought direct from Abcam or one of our authorized distributors