

PE Anti-CD80 antibody [MEM-233], prediluted ab69778

★★★★★ [1 Abreviews](#) [2 References](#) [画像数 1](#)

製品の概要

製品名	PE Anti-CD80 antibody [MEM-233], prediluted
製品の詳細	PE Mouse monoclonal [MEM-233] to CD80, prediluted
由来種	Mouse
標識	PE. Ex: 488nm, Em: 575nm
アプリケーション	適用あり: Flow Cyt
種交差性	交差種: Recombinant fragment
免疫原	CD80 fusion protein
特記事項	<p>The purified antibody is conjugated with R-Phycoerythrin (PE) under optimum conditions.</p> <p>The Life Science industry has been in the grips of a reproducibility crisis for a number of years. Abcam is leading the way in addressing this with our range of recombinant monoclonal antibodies and knockout edited cell lines for gold-standard validation. Please check that this product meets your needs before purchasing.</p> <p>If you have any questions, special requirements or concerns, please send us an inquiry and/or contact our Support team ahead of purchase. Recommended alternatives for this product can be found below, along with publications, customer reviews and Q&As</p>

製品の特性

製品の状態	Liquid
保存方法	Shipped at 4°C. Store at +4°C.
バッファー	<p>pH: 7.4</p> <p>Preservative: 0.097% Sodium azide</p> <p>Constituents: 0.2% BSA, PBS</p>
精製度	Size exclusion
ポリ/モノ	モノクローナル
クローン名	MEM-233
アイソタイプ	IgG1

アプリケーション

The Abpromise guarantee

Abpromise保証は、次のテスト済みアプリケーションにおけるab69778の使用に適用されます

アプリケーションノートには、推奨の開始希釈率がありますが、適切な希釈率につきましてはご検討ください。

アプリケーション	Abreviews	特記事項
Flow Cyt	★★★★★ (1)	

追加情報

Flow Cyt: Use 20µl for 10⁶ cells or 100µl whole blood.

Not yet tested in other applications.

Optimal dilutions/concentrations should be determined by the end user.

ターゲット情報

機能

Involved in the costimulatory signal essential for T-lymphocyte activation. T-cell proliferation and cytokine production is induced by the binding of CD28 or CTLA-4 to this receptor.

組織特異性

Expressed on activated B-cells, macrophages and dendritic cells.

配列類似性

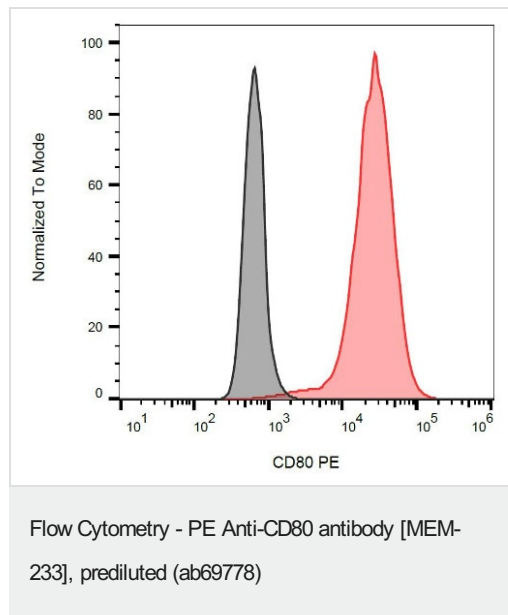
Contains 1 Ig-like C2-type (immunoglobulin-like) domain.

Contains 1 Ig-like V-type (immunoglobulin-like) domain.

細胞内局在

Membrane.

画像



Surface staining of CD80-transfected P815 cells with anti-human CD80 (MEM-233) PE.

Please note: All products are "FOR RESEARCH USE ONLY. NOT FOR USE IN DIAGNOSTIC PROCEDURES"

Our Abpromise to you: Quality guaranteed and expert technical support

- Replacement or refund for products not performing as stated on the datasheet
- Valid for 12 months from date of delivery

- Response to your inquiry within 24 hours
- We provide support in Chinese, English, French, German, Japanese and Spanish
- Extensive multi-media technical resources to help you
- We investigate all quality concerns to ensure our products perform to the highest standards

If the product does not perform as described on this datasheet, we will offer a refund or replacement. For full details of the Abpromise, please visit <https://www.abcam.co.jp/abpromise> or contact our technical team.

Terms and conditions

- Guarantee only valid for products bought direct from Abcam or one of our authorized distributors