


PE Anti-CD4 antibody [RPA-T4] ab218627

1 References [画像数 1](#)

製品の概要

製品名	PE Anti-CD4 antibody [RPA-T4]
製品の詳細	PE Mouse monoclonal [RPA-T4] to CD4
由来種	Mouse
標識	PE. Ex: 488nm, Em: 575nm
アプリケーション	適用あり: Flow Cyt
種交差性	交差種: Human 交差が予測される動物種: Chimpanzee 
免疫原	The details of the immunogen for this antibody are not available.
ポジティブ・コントロール	FACS: Human peripheral blood lymphocytes.
特記事項	<p>The Life Science industry has been in the grips of a reproducibility crisis for a number of years. Abcam is leading the way in addressing this with our range of recombinant monoclonal antibodies and knockout edited cell lines for gold-standard validation. Please check that this product meets your needs before purchasing.</p> <p>If you have any questions, special requirements or concerns, please send us an inquiry and/or contact our Support team ahead of purchase. Recommended alternatives for this product can be found below, along with publications, customer reviews and Q&As</p>

製品の特性

製品の状態	Liquid
保存方法	Shipped at 4°C. Store at +4°C. Store In the Dark.
バッファー	pH: 7.20 Preservative: 0.09% Sodium azide Constituents: 0.87% Sodium chloride, 0.1% Gelatin, 0.12% Monobasic dihydrogen sodium phosphate
精製度	Protein G purified
特記事項 (精製)	Purified from tissue culture supernatant and conjugated under optimal conditions, with unreacted dye removed from the preparation.
ポリ/モノ	モノクローナル
クローン名	RPA-T4

アイソタイプ IgG1
軽鎖の種類 kappa

アプリケーション

The Abpromise guarantee **Abpromise保証は、次のテスト済みアプリケーションにおけるab218627の使用に適用されます**
アプリケーションノートには、推奨の開始希釈率がありますが、適切な希釈率につきましてはご検討ください。

アプリケーション	Abreviews	特記事項
Flow Cyt		Use 5µl for 10 ⁵⁻⁸ cells.

ターゲット情報

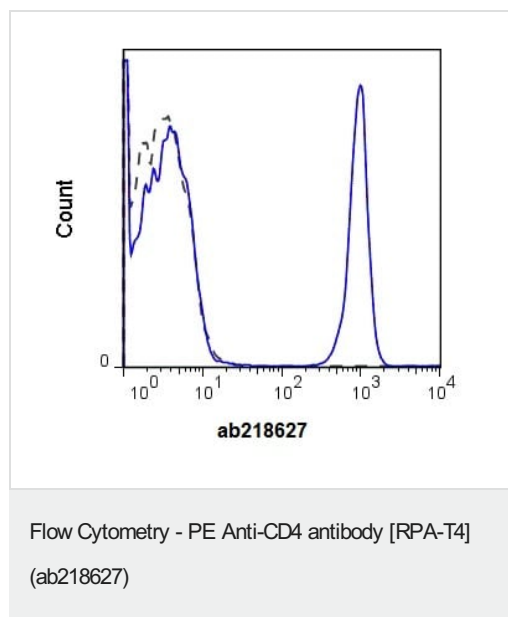
機能 Accessory protein for MHC class-II antigen/T-cell receptor interaction. May regulate T-cell activation. Induces the aggregation of lipid rafts.

配列類似性 Contains 3 Ig-like C2-type (immunoglobulin-like) domains.
Contains 1 Ig-like V-type (immunoglobulin-like) domain.

翻訳後修飾 Palmitoylation and association with LCK contribute to the enrichment of CD4 in lipid rafts.

細胞内局在 Cell membrane. Localizes to lipid rafts. Removed from plasma membrane by HIV-1 Nef protein that increases clathrin-dependent endocytosis of this antigen to target it to lysosomal degradation. Cell surface expression is also down-modulated by HIV-1 Envelope polyprotein gp160 that interacts with, and sequesters CD4 in the endoplasmic reticulum.

画像



Flow cytometry analysis of Human peripheral blood lymphocyte labeling CD4 using 5 µl (0.5 µg) of ab218627 (solid line) and 0.5 µg of Phycoerythrin Mouse IgG1 control (dashed line).

Please note: All products are "FOR RESEARCH USE ONLY. NOT FOR USE IN DIAGNOSTIC PROCEDURES"

Our Abpromise to you: Quality guaranteed and expert technical support

- Replacement or refund for products not performing as stated on the datasheet
- Valid for 12 months from date of delivery
- Response to your inquiry within 24 hours

- We provide support in Chinese, English, French, German, Japanese and Spanish
- Extensive multi-media technical resources to help you
- We investigate all quality concerns to ensure our products perform to the highest standards

If the product does not perform as described on this datasheet, we will offer a refund or replacement. For full details of the Abpromise, please visit <https://www.abcam.co.jp/abpromise> or contact our technical team.

Terms and conditions

- Guarantee only valid for products bought direct from Abcam or one of our authorized distributors