


PE Anti-CD35 antibody [E11] ab178451

1 References [画像数 1](#)

製品の概要

製品名	PE Anti-CD35 antibody [E11]
製品の詳細	PE Mouse monoclonal [E11] to CD35
由来種	Mouse
標識	PE. Ex: 488nm, Em: 575nm
特異性	This antibody recognizes CD35, a type I glycoprotein expressed on granulocytes, monocytes, B cells, follicular dendritic cells, erythrocytes, NK and T cell subsets, as well as e.g. on glomerular podocytes.
アプリケーション	適用あり: Flow Cyt
種交差性	交差種: Human 交差が予測される動物種: Non human primates 
免疫原	Tissue, cells or virus corresponding to Human CD35. Acute monocytic leukemia cells and normal blood monocytes
ポジティブ・コントロール	Flow Cyt: Human blood.
特記事項	<p>The Life Science industry has been in the grips of a reproducibility crisis for a number of years. Abcam is leading the way in addressing this with our range of recombinant monoclonal antibodies and knockout edited cell lines for gold-standard validation. Please check that this product meets your needs before purchasing.</p> <p>If you have any questions, special requirements or concerns, please send us an inquiry and/or contact our Support team ahead of purchase. Recommended alternatives for this product can be found below, along with publications, customer reviews and Q&As</p>

製品の特性

製品の状態	Liquid
保存方法	Shipped at 4°C. Store at +4°C. Do Not Freeze. Store In the Dark.
バッファー	pH: 7.4 Preservative: 0.1% Sodium azide Constituents: 99% PBS, 0.2% BSA
精製度	BSA is high-grade and protease free. Size exclusion

特記事項 (精製)	The purified antibody is conjugated with R-Phycoerythrin (PE) under optimum conditions. The conjugate is purified by size-exclusion chromatography and adjusted for direct use.
ポリ/モノ	モノクローナル
クローン名	E11
アイソタイプ	IgG1

アプリケーション

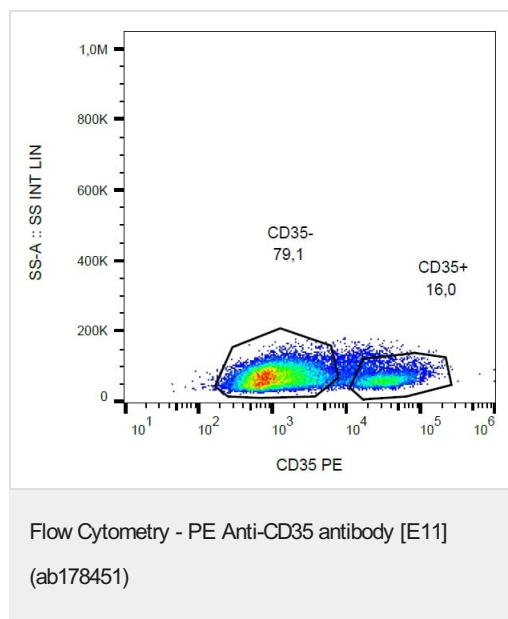
The Abpromise guarantee **Abpromise保証は、**次のテスト済みアプリケーションにおけるab178451の使用に適用されます
アプリケーションノートには、推奨の開始希釈率がありますが、適切な希釈率につきましてはご検討ください。

アプリケーション	Abreviews	特記事項
Flow Cyt		Use at an assay dependent concentration. 10 µl reagent / 100 µl of whole blood or 10 ⁶ cells in a suspension.

ターゲット情報

機能	Mediates cellular binding of particles and immune complexes that have activated complement.
組織特異性	Present on erythrocytes, leukocytes, glomerular podocytes, and splenic follicular dendritic cells.
配列類似性	Belongs to the receptors of complement activation (RCA) family. Contains 30 Sushi (CCP/SCR) domains.
細胞内局在	Membrane.

画像



Flow cytometry analysis of human peripheral blood labeling CD35 using ab178451 at 10 µL/100ul peripheral whole blood. Surface staining.

Please note: All products are "FOR RESEARCH USE ONLY. NOT FOR USE IN DIAGNOSTIC PROCEDURES"

Our Abpromise to you: Quality guaranteed and expert technical support

- Replacement or refund for products not performing as stated on the datasheet
- Valid for 12 months from date of delivery
- Response to your inquiry within 24 hours

- We provide support in Chinese, English, French, German, Japanese and Spanish
- Extensive multi-media technical resources to help you
- We investigate all quality concerns to ensure our products perform to the highest standards

If the product does not perform as described on this datasheet, we will offer a refund or replacement. For full details of the Abpromise, please visit <https://www.abcam.co.jp/abpromise> or contact our technical team.

Terms and conditions

- Guarantee only valid for products bought direct from Abcam or one of our authorized distributors