

PE Anti-CD161 antibody [HP-3G10] ab269324

1 References [画像数 1](#)

製品の概要

製品名	PE Anti-CD161 antibody [HP-3G10]
製品の詳細	PE Mouse monoclonal [HP-3G10] to CD161
由来種	Mouse
標識	PE. Ex: 488nm, Em: 575nm
アプリケーション	適用あり: Flow Cyt
種交差性	交差種: Human
免疫原	Tissue, cells or virus corresponding to CD161. human NK cells Database link: Q12918
ポジティブ・コントロール	Flow: Human peripheral blood cells.
特記事項	<p>The Life Science industry has been in the grips of a reproducibility crisis for a number of years. Abcam is leading the way in addressing this with our range of recombinant monoclonal antibodies and knockout edited cell lines for gold-standard validation. Please check that this product meets your needs before purchasing.</p> <p>If you have any questions, special requirements or concerns, please send us an inquiry and/or contact our Support team ahead of purchase. Recommended alternatives for this product can be found below, along with publications, customer reviews and Q&As</p>

製品の特性

製品の状態	Liquid
保存方法	Shipped at 4°C. Store at +4°C short term (1-2 weeks). Store at +4°C. Store In the Dark.
バッファー	pH: 7.4 Preservative: 0.1% Sodium azide Constituent: PBS
精製度	Size exclusion
ポリ/モノ	モノクローナル
クローン名	HP-3G10
アイソタイプ	IgG1
軽鎖の種類	kappa

アプリケーション

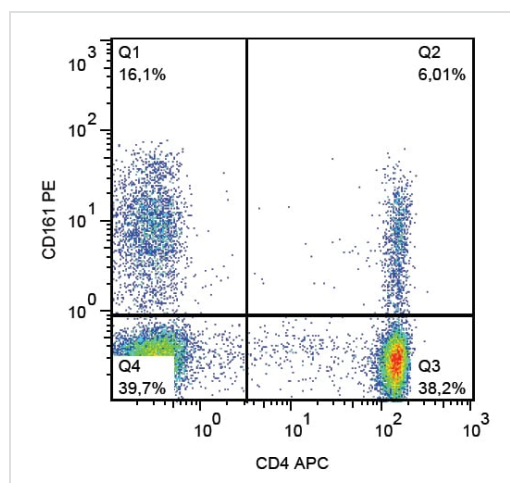
The Abpromise guarantee Abpromise保証は、次のテスト済みアプリケーションにおけるab269324の使用に適用されます
アプリケーションノートには、推奨の開始希釈率がありますが、適切な希釈率につきましてはご確認ください。

アプリケーション	Abreviews	特記事項
Flow Cyt		Use 10µl for 10 ⁶ cells.

ターゲット情報

機能	Plays an inhibitory role on natural killer (NK) cells cytotoxicity. Activation results in specific acid sphingomyelinase/SMPD1 stimulation with subsequent marked elevation of intracellular ceramide. Activation also leads to AKT1/PKB and RPS6KA1/RSK1 kinases stimulation as well as markedly enhanced T-cell proliferation induced by anti-CD3. Acts as a lectin that binds to the terminal carbohydrate Gal-alpha(1,3)Gal epitope as well as to the N-acetyllactosamine epitope. Binds also to CLEC2D/LLT1 as a ligand and inhibits NK cell-mediated cytotoxicity as well as interferon-gamma secretion in target cells.
組織特異性	Expressed in a subset of NK cells predominantly in intestinal epithelium and liver. Detected in peripheral blood T-cells and preferentially in adult T-cells with a memory antigenic phenotype.
配列類似性	Contains 1 C-type lectin domain.
翻訳後修飾	N-glycosylated. Contains sialic acid residues.
細胞内局在	Membrane.

画像



Flow cytometry analysis (surface staining) of human peripheral blood cells labeling CD161 with ab269324.

Flow Cytometry - PE Anti-CD161 antibody [HP-3G10] (ab269324)

Please note: All products are "FOR RESEARCH USE ONLY. NOT FOR USE IN DIAGNOSTIC PROCEDURES"

Our Abpromise to you: Quality guaranteed and expert technical support

- Replacement or refund for products not performing as stated on the datasheet
- Valid for 12 months from date of delivery
- Response to your inquiry within 24 hours

- We provide support in Chinese, English, French, German, Japanese and Spanish
- Extensive multi-media technical resources to help you
- We investigate all quality concerns to ensure our products perform to the highest standards

If the product does not perform as described on this datasheet, we will offer a refund or replacement. For full details of the Abpromise, please visit <https://www.abcam.co.jp/abpromise> or contact our technical team.

Terms and conditions

- Guarantee only valid for products bought direct from Abcam or one of our authorized distributors