

# PE Anti-CD103 antibody [OX62] ab95763

4 References [画像数 1](#)

### 製品の概要

製品名	PE Anti-CD103 antibody [OX62]
製品の詳細	PE Mouse monoclonal [OX62] to CD103
由来種	Mouse
標識	PE. Ex: 488nm, Em: 575nm
アプリケーション	<b>適用あり:</b> Flow Cyt
種交差性	<b>交差種:</b> Rat
免疫原	Tissue, cells or virus. Density gradient enriched PVG Rat thoracic duct dendritic cells.
ポジティブ・コントロール	Rat splenocytes.
特記事項	<p>The Life Science industry has been in the grips of a reproducibility crisis for a number of years. Abcam is leading the way in addressing this with our range of recombinant monoclonal antibodies and knockout edited cell lines for gold-standard validation. Please check that this product meets your needs before purchasing.</p> <p>If you have any questions, special requirements or concerns, please send us an inquiry and/or contact our Support team ahead of purchase. Recommended alternatives for this product can be found below, along with publications, customer reviews and Q&amp;As</p>

### 製品の特性

製品の状態	Liquid
保存方法	Shipped at 4°C. Store at +4°C.
バッファー	pH: 7.20 Preservative: 0.09% Sodium azide
精製度	Protein G purified
ポリ/モノ	モノクローナル
クローン名	OX62
アイソタイプ	IgG1

### アプリケーション

## The Abpromise guarantee

**Abpromise保証は、次のテスト済みアプリケーションにおけるab95763の使用に適用されます**

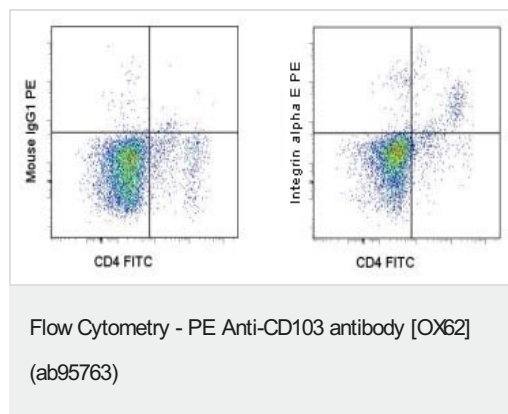
アプリケーションノートには、推奨の開始希釈率がありますが、適切な希釈率につきましてはご検討ください。

アプリケーション	Abreviews	特記事項
Flow Cyt		Use 0.125-0.25µg for 10 <sup>5</sup> cells. Cell number should be determined empirically but can range from 105 to 108 cells/test (based on a test volume of 100 µl).

## ターゲット情報

機能	Integrin alpha-E/beta-7 is a receptor for E-cadherin. It mediates adhesion of intra-epithelial T-lymphocytes to epithelial cell monolayers.
組織特異性	Expressed on a subclass of T-lymphocytes known as intra-epithelial lymphocytes which are located between mucosal epithelial cells.
配列類似性	Belongs to the integrin alpha chain family. Contains 7 FG-GAP repeats. Contains 1 VWFA domain.
ドメイン	The integrin I-domain (insert) is a VWFA domain. Integrins with I-domains do not undergo protease cleavage.
細胞内局在	Membrane.

## 画像



Flow cytometry staining of rat splenocytes with Anti-Rat CD4 FITC and 0.125 µg of Mouse IgG1 ? Isotype Control PE (left) or 0.125 µg of ab95763 (right). Cells in the lymphocyte gate were used for analysis and events are displayed after gating out CD3+ T cells and CD45RB+ cells and gating on the remaining cells, which are MHC Class II+.

**Please note:** All products are "FOR RESEARCH USE ONLY. NOT FOR USE IN DIAGNOSTIC PROCEDURES"

## Our Abpromise to you: Quality guaranteed and expert technical support

- Replacement or refund for products not performing as stated on the datasheet
- Valid for 12 months from date of delivery

- Response to your inquiry within 24 hours
- We provide support in Chinese, English, French, German, Japanese and Spanish
- Extensive multi-media technical resources to help you
- We investigate all quality concerns to ensure our products perform to the highest standards

If the product does not perform as described on this datasheet, we will offer a refund or replacement. For full details of the Abpromise, please visit <https://www.abcam.co.jp/abpromise> or contact our technical team.

#### **Terms and conditions**

---

- Guarantee only valid for products bought direct from Abcam or one of our authorized distributors