

### PE Anti-CCR2 antibody [EPR22191] ab270167

リコンビナント **RabMAb**

画像数 2

#### 製品の概要

製品名	PE Anti-CCR2 antibody [EPR22191]
製品の詳細	PE Rabbit monoclonal [EPR22191] to CCR2
由来種	Rabbit
標識	PE. Ex: 488nm, Em: 575nm
アプリケーション	<b>適用あり:</b> Flow Cyt
種交差性	<b>交差種:</b> Human
免疫原	Synthetic peptide. This information is proprietary to Abcam and/or its suppliers.
ポジティブ・コントロール	Flow Cyt: Human PBMCs.
特記事項	<p>This product is a recombinant monoclonal antibody, which offers several advantages including:</p> <ul style="list-style-type: none"> <li>- High batch-to-batch consistency and reproducibility</li> <li>- Improved sensitivity and specificity</li> <li>- Long-term security of supply</li> <li>- Animal-free production</li> </ul> <p>For more information <a href="#">see here</a>.</p> <p>Our RabMAb<sup>®</sup> technology is a patented hybridoma-based technology for making rabbit monoclonal antibodies. For details on our patents, please refer to <a href="#">RabMAb<sup>®</sup> patents</a>.</p>

#### 製品の特性

製品の状態	Liquid
保存方法	Shipped at 4°C. Store at +4°C short term (1-2 weeks). Upon delivery aliquot. Store at +4°C. Store In the Dark.
バッファー	<p>pH: 7.40</p> <p>Preservative: 0.02% Sodium azide</p> <p>Constituents: 1% BSA, 98.98% PBS</p>
精製度	Protein A purified
ポリ/モノ	モノクローナル
クローン名	EPR22191
アイソタイプ	IgG

## アプリケーション

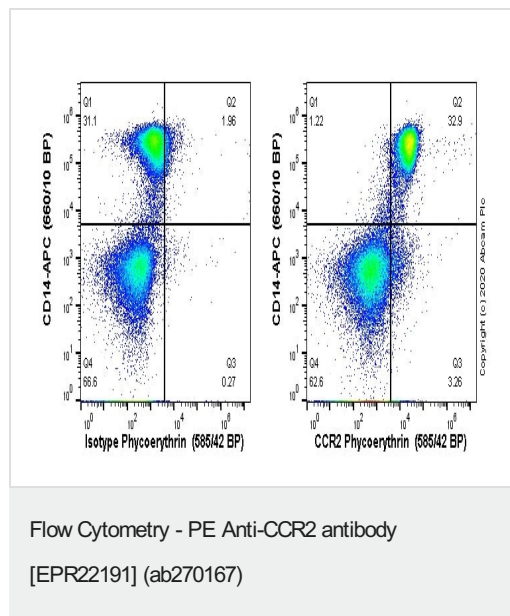
**The Abpromise guarantee**      **Abpromise保証は、**次のテスト済みアプリケーションにおけるab270167の使用に適用されます  
アプリケーションノートには、推奨の開始希釈率がありますが、適切な希釈率につきましてはご検討ください。

アプリケーション	Abreviews	特記事項
Flow Cyt		1/500.

## ターゲット情報

機能	Receptor for the MCP-1, MCP-3 and MCP-4 chemokines. Transduces a signal by increasing the intracellular calcium ions level. Alternative coreceptor with CD4 for HIV-1 infection.
配列類似性	Belongs to the G-protein coupled receptor 1 family.
翻訳後修飾	N-glycosylated.
細胞内局在	Cell membrane.





## 画像



Flow cytometry staining of human peripheral blood mononuclear cells (PBMCs) with ab270167 (right) or Rabbit IgG (monoclonal) Phycoerythrin (**ab209478**) isotype (left). PBMCs were incubated for 30 min on ice in 1x PBS containing 10µg/mL human IgG and 10% normal goat serum to block FC receptors and non-specific protein-protein interaction followed by the antibody (ab270167) or Rabbit IgG (monoclonal) Phycoerythrin (**ab209478**) isotype (100 µl at 1µg/mL (1/500)) for 30 min on ice. The cells were simultaneously stained with CD14.

Acquisition of >30000 events were collected using a 50 mW Yellow/Green laser (561nm) and 585/42 bandpass filter. Events were gated on live single cells.

Why choose a recombinant antibody?

 <p><b>Research with confidence</b> Consistent and reproducible results</p>	 <p><b>Long-term and scalable supply</b> Recombinant technology</p>
 <p><b>Success from the first experiment</b> Confirmed specificity</p>	 <p><b>Ethical standards compliant</b> Animal-free production</p>

PE Anti-CCR2 antibody [EPR22191] (ab270167)

**Please note:** All products are "FOR RESEARCH USE ONLY. NOT FOR USE IN DIAGNOSTIC PROCEDURES"

### Our Abpromise to you: Quality guaranteed and expert technical support

---

- Replacement or refund for products not performing as stated on the datasheet
- Valid for 12 months from date of delivery
- Response to your inquiry within 24 hours
- We provide support in Chinese, English, French, German, Japanese and Spanish
- Extensive multi-media technical resources to help you
- We investigate all quality concerns to ensure our products perform to the highest standards

If the product does not perform as described on this datasheet, we will offer a refund or replacement. For full details of the Abpromise, please visit <https://www.abcam.co.jp/abpromise> or contact our technical team.

### Terms and conditions

---

- Guarantee only valid for products bought direct from Abcam or one of our authorized distributors