


Anti-PDCD2 antibody [EPR7158] ab133324

リコンビナント RabMAb[®]

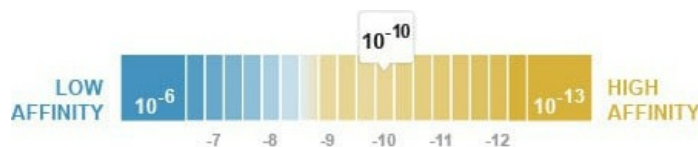
4 References [画像数 3](#)

製品の概要

製品名	Anti-PDCD2 antibody [EPR7158]
製品の詳細	Rabbit monoclonal [EPR7158] to PDCD2
由来種	Rabbit
アプリケーション	適用あり: WB 適用なし: Flow Cyt, ICC/IF or IHC-P
種交差性	交差種: Human 交差が予測される動物種: Mouse, Rat 
免疫原	Synthetic peptide. This information is proprietary to Abcam and/or its suppliers.
ポジティブ・コントロール	293T, HeLa, and Ramos cell lysates.
特記事項	This product is a recombinant monoclonal antibody, which offers several advantages including: <ul style="list-style-type: none"> - High batch-to-batch consistency and reproducibility - Improved sensitivity and specificity - Long-term security of supply - Animal-free production For more information see here . Our RabMAb [®] technology is a patented hybridoma-based technology for making rabbit monoclonal antibodies. For details on our patents, please refer to RabMAb[®] patents .

製品の特性

製品の状態	Liquid
保存方法	Shipped at 4°C. Store at -20°C. Stable for 12 months at -20°C.
解離定数 (K _D 値)	K _D = 1.06 x 10 ⁻¹⁰ M



[Learn more about K_D](#)

バッファー	pH: 7.20
-------	----------

Preservative: 0.01% Sodium azide

Constituents: 9% PBS, 40% Glycerol (glycerin, glycerine), 0.05% BSA, 50% Tissue culture supernatant

精製度	Tissue culture supernatant
ポリ/モノ	モノクローナル
クローン名	EPR7158
アイソタイプ	IgG

アプリケーション

The Abpromise guarantee Abpromise保証は、次のテスト済みアプリケーションにおけるab133324の使用に適用されます
アプリケーションノートには、推奨の開始希釈率がありますが、適切な希釈率につきましてはご検討ください。

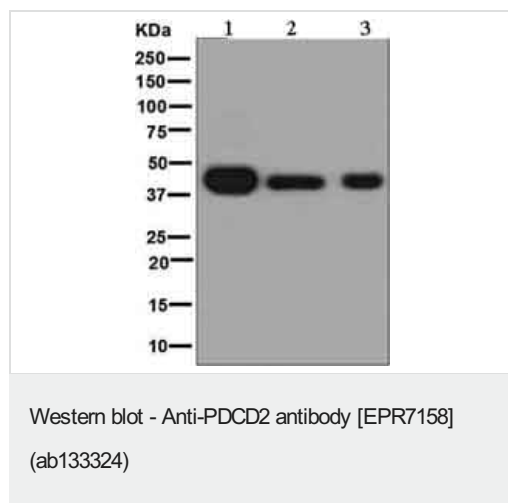
アプリケーション	Abreviews	特記事項
WB		1/1000 - 1/10000. Predicted molecular weight: 39 kDa.

追加情報 Is unsuitable for Flow Cyt, ICC/IF or IHC-P.

ターゲット情報

機能	May be a DNA-binding protein with a regulatory function. May play an important role in cell death and/or in regulation of cell proliferation.
組織特異性	Ubiquitous.
配列類似性	Contains 1 MYND-type zinc finger.
細胞内局在	Nucleus.

画像



All lanes : Anti-PDCD2 antibody [EPR7158] (ab133324) at 1/1000 dilution

Lane 1 : 293T cell lysate

Lane 2 : HeLa cell lysate

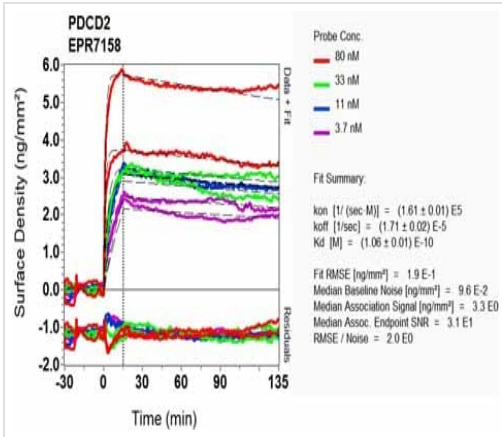
Lane 3 : Ramos cell lysate

Lysates/proteins at 10 µg per lane.

Secondary

All lanes : HRP labelled goat anti-rabbit at 1/2000 dilution

Predicted band size: 39 kDa



OI-RD Scanning - Anti-PDCD2 antibody [EPR7158]
(ab133324)

Equilibrium disassociation constant (K_D)

Learn more about K_D

[Click here to learn more about \$K_D\$](#)

Why choose a recombinant antibody?

Research with confidence
Consistent and reproducible results

Long-term and scalable supply
Recombinant technology

Success from the first experiment
Confirmed specificity

Ethical standards compliant
Animal-free production

Anti-PDCD2 antibody [EPR7158] (ab133324)

Please note: All products are "FOR RESEARCH USE ONLY. NOT FOR USE IN DIAGNOSTIC PROCEDURES"

Our Abpromise to you: Quality guaranteed and expert technical support

- Replacement or refund for products not performing as stated on the datasheet
- Valid for 12 months from date of delivery
- Response to your inquiry within 24 hours
- We provide support in Chinese, English, French, German, Japanese and Spanish
- Extensive multi-media technical resources to help you
- We investigate all quality concerns to ensure our products perform to the highest standards

If the product does not perform as described on this datasheet, we will offer a refund or replacement. For full details of the Abpromise, please visit <https://www.abcam.co.jp/abpromise> or contact our technical team.

Terms and conditions

- Guarantee only valid for products bought direct from Abcam or one of our authorized distributors