

Anti-PD1 (phospho Y248) antibody [EPR19821] ab206378

リコンビナント RabMAb[®]

画像数 4

製品の概要

製品名	Anti-PD1 (phospho Y248) antibody [EPR19821]
製品の詳細	Rabbit monoclonal [EPR19821] to PD1 (phospho Y248)
由来種	Rabbit
アプリケーション	適用あり: WB, Dot blot, IP
種交差性	交差種: Human
免疫原	Synthetic peptide. This information is proprietary to Abcam and/or its suppliers.
ポジティブ・コントロール	WB: HEK-293T transfected with a PD1 (WT) plus a 25 kDa fusion protein expression vector, then treated with 100 µM pervanadate for 10 minutes whole cell lysate. IP: HEK-293T transfected with PD1 (WT) plus 25 kDa fusion protein expression vector, then treated with 100 µM pervanadate for 10 minutes whole cell lysate.
特記事項	<p>This product is a recombinant monoclonal antibody, which offers several advantages including:</p> <ul style="list-style-type: none">- High batch-to-batch consistency and reproducibility- Improved sensitivity and specificity- Long-term security of supply- Animal-free production <p>For more information see here.</p> <p>Our RabMAb[®] technology is a patented hybridoma-based technology for making rabbit monoclonal antibodies. For details on our patents, please refer to RabMAb[®] patents.</p>

製品の特性

製品の状態	Liquid
保存方法	Shipped at 4°C. Store at +4°C short term (1-2 weeks). Upon delivery aliquot. Store at -20°C long term. Avoid freeze / thaw cycle.
バッファー	pH: 7.2 Preservative: 0.01% Sodium azide Constituents: PBS, 40% Glycerol, 0.05% BSA
精製度	Protein A purified
ポリ/モノ	モノクローナル
クローン名	EPR19821

アプリケーション

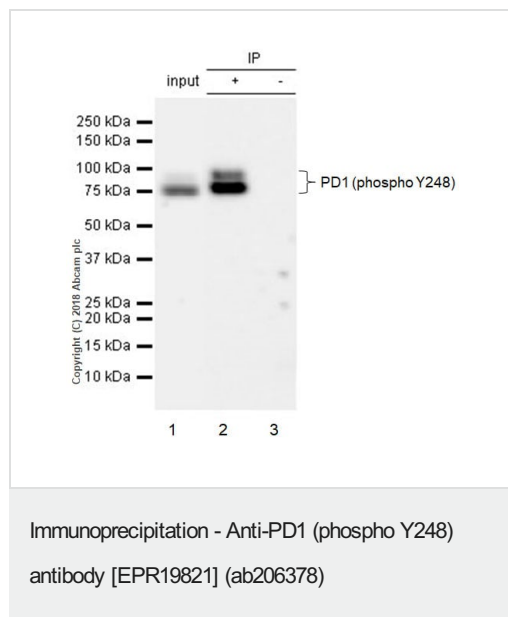
The Abpromise guarantee Abpromise保証は、次のテスト済みアプリケーションにおけるab206378の使用に適用されず
 アプリケーションノートには、推奨の開始希釈率がありますが、適切な希釈率につきましてはご確認ください。

アプリケーション	Abreviews	特記事項
WB		1/1000. Predicted molecular weight: 32 kDa.
Dot blot		1/1000.
IP		1/30.

ターゲット情報

機能	Possible cell death inducer, in association with other factors.
関連疾患	Genetic variation in PDCD1 is associated with susceptibility to systemic lupus erythematosus type 2 (SLEB2) [MIM:605218]. Systemic lupus erythematosus is a chronic, inflammatory and often febrile multisystemic disorder of connective tissue. It affects principally the skin, joints, kidneys and serosal membranes. It is thought to represent a failure of the regulatory mechanisms of the autoimmune system.
配列類似性	Contains 1 Ig-like V-type (immunoglobulin-like) domain.
発生段階	Induced at programmed cell death.
細胞内局在	Membrane.

画像



PD1 (phospho Y248) was immunoprecipitated from 0.35 mg of HEK-293T (human epithelial cell line from embryonic kidney transformed with large T antigen) transfected with a PD1 (WT) plus 25 kDa fusion protein expression vector, then treated with 100 μM pervanadate for 10 minutes whole cell lysate, with ab206378 at 1/30 dilution. Western blot was performed from the immunoprecipitate using ab206378 at 1/1000 dilution. VeriBlot for IP Detection Reagent (HRP) ([ab131366](#)) was used for detection at 1/5000 dilution.

Lane 1: HEK-293T transfected with a PD1 (WT) plus 25 kDa fusion protein expression vector, then treated with 100 μM pervanadate for 10 minutes whole cell lysate 10 μg (Input).

Lane 2: ab206378 IP in HEK-293T transfected with a PD1 (WT) plus 25 kDa fusion protein expression vector, then treated with 100

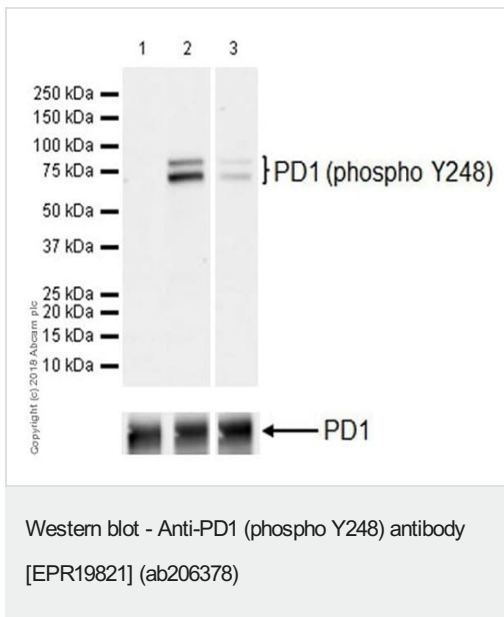
µM pervanadate for 10 minutes whole cell lysate.

Lane 3: Rabbit monoclonal IgG (**ab172730**) instead of ab206378 in HEK-293T transfected with a PD1 (WT) plus 25 kDa fusion protein expression vector, then treated with 100 µM pervanadate for 10 minutes whole cell lysate.

Exposure time: 30 seconds

Blocking and diluting buffer and concentration: 5% NFDm/TBST

The observed bands around 75 kDa comprise PD-1 plus the 25 kDa fusion protein. The plasmids were kindly provided by our collaborator Dr. Liang Chen, NIBS.



All lanes : Anti-PD1 (phospho Y248) antibody [EPR19821] (ab206378) at 1/1000 dilution

Lane 1 : Untreated-HEK-293T (human epithelial cell line from embryonic kidney transformed with large T antigen) whole cell lysate transfected with a PD1 (WT) plus a 25 kDa fusion protein expression vector

Lane 2 : HEK-293T transfected with a PD1 (WT) plus a 25 kDa fusion protein expression vector, then treated with 100 µM pervanadate for 10 minutes whole cell lysate

Lane 3 : HEK-293T transfected with PD1 (WT) plus a 25 kDa fusion protein expression vector, then treated with 100 µM pervanadate for 10 minutes, whole cell lysate (20 µg). Following the transfer to PVDF, the membrane was treated with alkaline phosphatase for 1h at 37°C.

Lysates/proteins at 20 µg per lane.

Secondary

All lanes : Goat Anti-Rabbit IgG H&L (HRP) (**ab97051**) at 1/20000 dilution

Predicted band size: 32 kDa

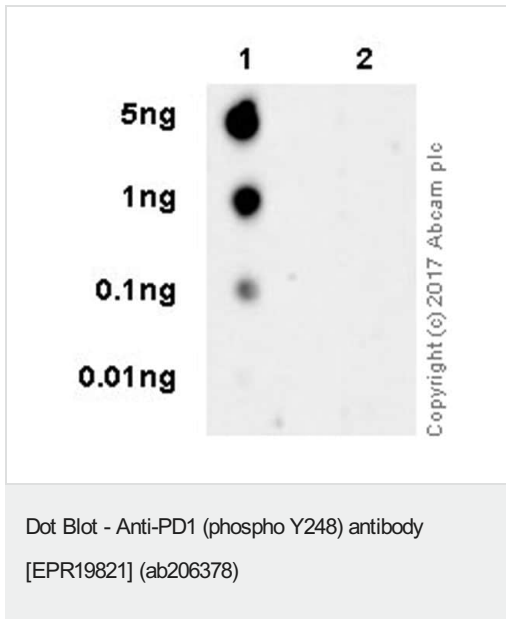
Observed band size: 70-75 kDa

Exposure time: 30 seconds

Blocking/Dilution buffer: 5% NFDm/TBST.

The observed bands at around 75 kDa are PD-1 plus the 25 kDa

fusion protein. The expression profile observed is consistent with what has been described in the literature (PMID: 22641383). The plasmids were kindly provided by our collaborator Dr. Liang Chen NIBS.



Dot blot analysis of PD1 (phospho Y248) labeled with ab206378 at 1/1000 dilution.

Lane 1: PD1 (phospho Y248) peptide.

Lane 2: PD1 non-phospho peptide.

Goat Anti-Rabbit IgG H&L (HRP) ([ab97051](#)) at 1/100000 dilution was used as secondary antibody.

Blocking/Dilution buffer: 5% NFD/MTBST.

Exposure time: 1 minute.

The blot was developed on a BIO-RAD® ChemiDoc™ MP instrument.

Why choose a recombinant antibody?

- Research with confidence**
Consistent and reproducible results
- Long-term and scalable supply**
Recombinant technology
- Success from the first experiment**
Confirmed specificity
- Ethical standards compliant**
Animal-free production

Anti-PD1 (phospho Y248) antibody [EPR19821] (ab206378)

Please note: All products are "FOR RESEARCH USE ONLY. NOT FOR USE IN DIAGNOSTIC PROCEDURES"

Our Abpromise to you: Quality guaranteed and expert technical support

- Replacement or refund for products not performing as stated on the datasheet
- Valid for 12 months from date of delivery
- Response to your inquiry within 24 hours
- We provide support in Chinese, English, French, German, Japanese and Spanish

- Extensive multi-media technical resources to help you
- We investigate all quality concerns to ensure our products perform to the highest standards

If the product does not perform as described on this datasheet, we will offer a refund or replacement. For full details of the Abpromise, please visit <https://www.abcam.co.jp/abpromise> or contact our technical team.

Terms and conditions

- Guarantee only valid for products bought direct from Abcam or one of our authorized distributors