

Anti-PD1 antibody [NAT105] - Rabbit IgG (Chimeric) ab216352

リコンビナント

画像数 7

製品の概要

製品名	Anti-PD1 antibody [NAT105] - Rabbit IgG (Chimeric)
製品の詳細	Rabbit monoclonal [NAT105] to PD1 - Chimeric
由来種	Rabbit
アプリケーション	適用あり: Flow Cyt (Intra), WB, IHC-P, IP
種交差性	交差種: Human
免疫原	Tissue, cells or virus corresponding to Human PD1. Specifically, human YT cells (NK-like leukemia cell line) that express PD1. Database link: Q15116
ポジティブ・コントロール	WB: MOLT-4 treated with 500 ng/ml Ionomycin and 10 ng/ml Phorbol-12-myristate-13-acetate (PMA) for 24 hours, whole cell lysate; Human tonsil lysate. IHC-P: Human tonsil and bladder carcinoma tissues. Flow Cyt (intra): MOLT-4 cells treated with 500 ng/ml Ionomycin and 10 ng/ml Phorbol-12-myristate-13-acetate (PMA) for 24 hours. IP: MOLT-4 treated with 500 ng/ml Ionomycin and 10 ng/ml Phorbol-12-myristate-13-acetate (PMA) for 24 hours whole cell lysate.
特記事項	This rabbit monoclonal chimeric antibody has been engineered from the mouse monoclonal parent antibody Anti-PD1 antibody [NAT105] (ab52587). By necessity, some mouse sequence is retained as part of the variable domain. We recommend using an Fc-directed, preadsorbed secondary antibody if multiplexing with mouse monoclonals. For example, ab150097 (AF488), ab150100 (AF594), ab150099 (AF647) or ab98467 (HRP).

製品の特性

製品の状態	Liquid
保存方法	Shipped at 4°C. Store at +4°C short term (1-2 weeks). Upon delivery aliquot. Store at -20°C long term. Avoid freeze / thaw cycle.
バッファー	pH: 7.2 Preservative: 0.01% Sodium azide Constituents: PBS, 40% Glycerol (glycerin, glycerine), 0.05% BSA
精製度	Protein A purified
ポリ/モノ	モノクローナル

クローン名	NAT105
アイソタイプ	IgG

アプリケーション

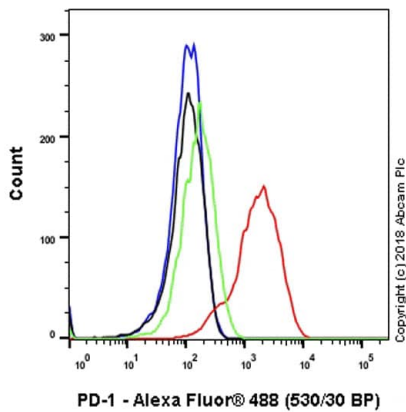
The Abpromise guarantee **Abpromise保証は、** 次のテスト済みアプリケーションにおけるab216352の使用に適用されます
アプリケーションノートには、推奨の開始希釈率がありますが、適切な希釈率につきましてはご検討ください。

アプリケーション	Abreviews	特記事項
Flow Cyt (Intra)		1/600.
WB		1/1000. Detects a band of approximately 50-55 kDa (predicted molecular weight: 32 kDa).
IHC-P		1/50. Perform heat mediated antigen retrieval before commencing with IHC staining protocol.
IP		1/30.

ターゲット情報

機能	Possible cell death inducer, in association with other factors.
関連疾患	Genetic variation in PDCD1 is associated with susceptibility to systemic lupus erythematosus type 2 (SLEB2) [MIM:605218]. Systemic lupus erythematosus is a chronic, inflammatory and often febrile multisystemic disorder of connective tissue. It affects principally the skin, joints, kidneys and serosal membranes. It is thought to represent a failure of the regulatory mechanisms of the autoimmune system.
配列類似性	Contains 1 Ig-like V-type (immunoglobulin-like) domain.
発生段階	Induced at programmed cell death.
細胞内局在	Membrane.

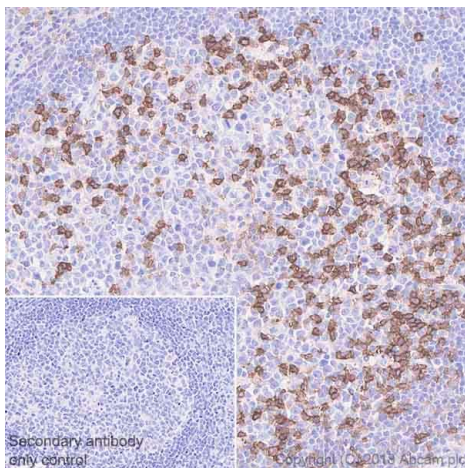
画像



Flow Cytometry (Intracellular) - Anti-PD1 antibody
[NAT105] - Rabbit IgG (Chimeric) (ab216352)

Intracellular flow cytometric analysis of MOLT-4 (human lymphoblastic leukemia cell line) cell line treated with 500 ng/ml Ionomycin and 10 ng/ml Phorbol-12-myristate-13-acetate (PMA) for 24 hours (Red) or Untreated control (Green) labeling PD1 with ab216352 at 1/600 dilution compared with a Rabbit IgG, monoclonal [EPR25A] - Isotype Control (**ab172730**) (black) and an unlabeled control (cells without incubation with primary antibody and secondary antibody) (blue). Goat Anti-Rabbit IgG H&L (Alexa Fluor® 488) (**ab150077**) at 1/2000 dilution was used as the secondary antibody.

Gated on viable cells.

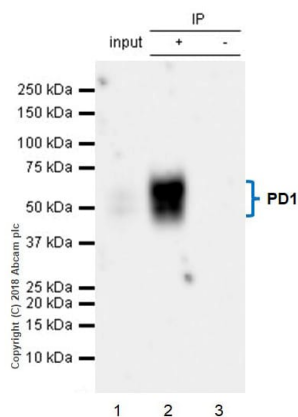


Immunohistochemistry (Formalin/PFA-fixed paraffin-embedded sections) - Anti-PD1 antibody [NAT105] - Rabbit IgG (Chimeric) (ab216352)

Immunohistochemical analysis of paraffin-embedded human tonsil tissue labeling PD1 with ab216352 at 1/50 dilution, followed by Rabbit specific IHC polymer detection kit HRP/DAB (**ab209101**) ready to use. Positive staining on T cells of human tonsil germinal center (PMID: 20087161; PMID: 17640856) is observed. Counter stained with hematoxylin.

Secondary antibody only control: Used PBS instead of primary antibody, secondary antibody is Rabbit specific IHC polymer detection kit HRP/DAB (**ab209101**) ready to use.

Perform antigen retrieval using Universal HIER antigen retrieval reagents (10X) (**ab208572**).



Immunoprecipitation - Anti-PD1 antibody [NAT105] - Rabbit IgG (Chimeric) (ab216352)

PD1 was immunoprecipitated from 0.35 mg of MOLT-4 (human lymphoblastic leukemia cell line) treated with 500 ng/ml Ionomycin and 10 ng/ml Phorbol-12-myristate-13-acetate (PMA) for 24 hours whole cell lysate with ab216352 at 1/30 dilution. Western blot was performed from the immunoprecipitate using ab216352 at 1/500 dilution. VeriBlot for IP Detection Reagent (HRP) ([ab131366](#)), was used for detection at 1/1,000 dilution

Lane 1: MOLT-4 treated with 500 ng/ml Ionomycin and 10 ng/ml Phorbol-12-myristate-13-acetate (PMA) for 24 hours whole cell lysate 10 µg (Input).

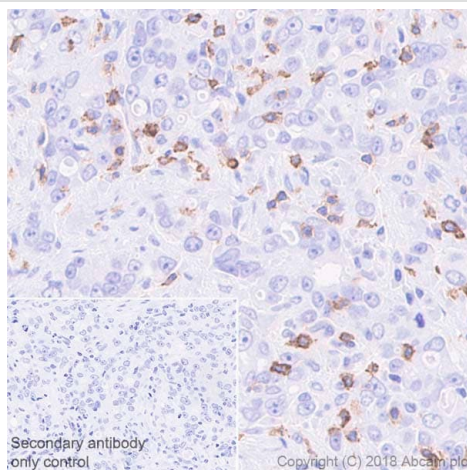
Lane 2: ab216352 IP in MOLT-4 treated with 500 ng/ml Ionomycin and 10 ng/ml Phorbol-12-myristate-13-acetate (PMA) for 24 hours whole cell lysate.

Lane 3: Rabbit monoclonal IgG ([ab172730](#)) instead of ab216352 in MOLT-4 treated with 500 ng/ml Ionomycin and 10 ng/ml Phorbol-12-myristate-13-acetate (PMA) for 24 hours whole cell lysate.

Blocking and dilution buffer and concentration: 5% NFDm/TBST.

Exposure time: 40 seconds.

The expression profile observed is consistent with what has been described in the literature (PMID: 26318293).

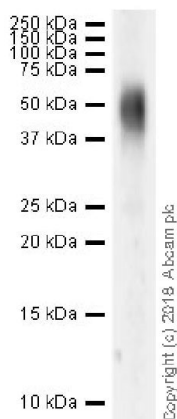


Immunohistochemistry (Formalin/PFA-fixed paraffin-embedded sections) - Anti-PD1 antibody [NAT105] - Rabbit IgG (Chimeric) (ab216352)

Immunohistochemical analysis of paraffin-embedded human bladder carcinoma tissue labeling PD1 with ab216352 at 1/50 dilution, followed by Rabbit specific IHC polymer detection kit HRP/DAB ([ab209101](#)) ready to use. Positive staining on lymphocytes in human bladder carcinoma (PMID: 20087161, PMID: 17640856) is observed. Counter stained with hematoxylin.

Secondary antibody only control: Used PBS instead of primary antibody, secondary antibody is Rabbit specific IHC polymer detection kit HRP/DAB ([ab209101](#)) Ready to use.

Perform antigen retrieval using Universal HIER antigen retrieval reagents (10X) ([ab208572](#)).



Western blot - Anti-PD1 antibody [NAT105] - Rabbit IgG (Chimeric) (ab216352)

Anti-PD1 antibody [NAT105] - Rabbit IgG (Chimeric) (ab216352) at 1/1000 dilution + Human tonsil lysate at 10 µg

Secondary

Goat Anti-Rabbit IgG H&L (HRP) ([ab97051](#)) at 1/20000 dilution

Developed using the ECL technique.

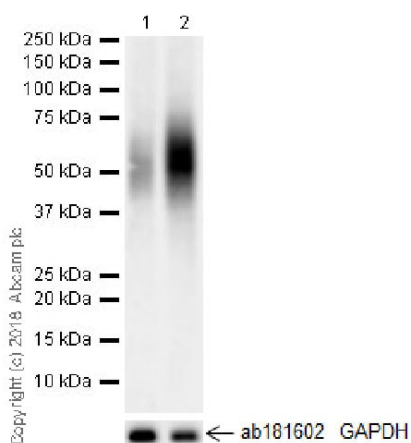
Predicted band size: 32 kDa

Observed band size: 50-55 kDa

Exposure time: 3 minutes

Blocking/Dilution buffer: 5% NFDM/TBST.

The expression profile observed is consistent with what has been described in the literature (PMID: 26318293).



Western blot - Anti-PD1 antibody [NAT105] - Rabbit IgG (Chimeric) (ab216352)

All lanes : Anti-PD1 antibody [NAT105] - Rabbit IgG (Chimeric) (ab216352) at 1/1000 dilution

Lane 1 : Untreated MOLT-4 (human lymphoblastic leukemia cell line) whole cell lysate

Lane 2 : MOLT-4 treated with 500 ng/ml Ionomycin and 10 ng/ml Phorbol-12-myristate-13-acetate (PMA) for 24 hours, whole cell lysate

Lysates/proteins at 10 µg per lane.

Secondary

All lanes : Goat Anti-Rabbit IgG H&L (HRP) ([ab97051](#)) at 1/20000 dilution

Developed using the ECL technique.

Predicted band size: 32 kDa

Observed band size: 50-55 kDa

Exposure time: 81 seconds

Blocking/Dilution buffer: 5% NFDM/TBST.

The expression profile observed is consistent with what has been described in the literature (PMID: 26318293).

Why choose a recombinant antibody?



- Research with confidence**
Consistent and reproducible results
- Long-term and scalable supply**
Recombinant technology
- Success from the first experiment**
Confirmed specificity
- Ethical standards compliant**
Animal-free production

Anti-PD1 antibody [NAT105] - Rabbit IgG (Chimeric)
(ab216352)

Please note: All products are "FOR RESEARCH USE ONLY. NOT FOR USE IN DIAGNOSTIC PROCEDURES"

Our Abpromise to you: Quality guaranteed and expert technical support

- Replacement or refund for products not performing as stated on the datasheet
- Valid for 12 months from date of delivery
- Response to your inquiry within 24 hours
- We provide support in Chinese, English, French, German, Japanese and Spanish
- Extensive multi-media technical resources to help you
- We investigate all quality concerns to ensure our products perform to the highest standards

If the product does not perform as described on this datasheet, we will offer a refund or replacement. For full details of the Abpromise, please visit <https://www.abcam.co.jp/abpromise> or contact our technical team.

Terms and conditions

- Guarantee only valid for products bought direct from Abcam or one of our authorized distributors