

Anti-PD-L1 antibody [SP142] - C-terminal, prediluted ab228463

リコンビナント RabMAb

21 References 画像数 11

製品の概要

製品名	Anti-PD-L1 antibody [SP142] - C-terminal, prediluted
製品の詳細	Rabbit monoclonal [SP142] to PD-L1 - C-terminal, prediluted
由来種	Rabbit
アプリケーション	適用あり: IHC-P
種交差性	交差種: Human
免疫原	Synthetic peptide. This information is proprietary to Abcam and/or its suppliers.
ポジティブ・コントロール	IHC-P: Human placenta, tonsil, lung squamous cell carcinoma, cervical squamous cell carcinoma, skin squamous cell carcinoma, Hodgkin's lymphoma, pancreatic adenocarcinoma and prostate adenocarcinoma tissues.
特記事項	This product is FOR RESEARCH USE ONLY. For commercial use, please contact partnerships@abcam.com.

製品の特性

製品の状態	Liquid
保存方法	Shipped at 4°C. Store at +4°C. Do Not Freeze.
バッファー	pH: 7.60 Preservative: 0.1% Sodium azide Constituents: Tris buffered saline, 1% BSA
精製度	Protein A/G purified
特記事項 (精製)	Purified from TCS by protein A/G.
ポリ/モノ	モノクローナル
クローン名	SP142
アイソタイプ	IgG

アプリケーション

The Abpromise guarantee Abpromise保証は、次のテスト済みアプリケーションにおけるab228463の使用に適用されます

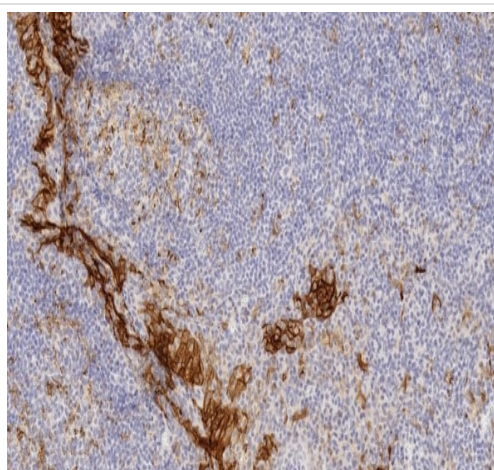
アプリケーションノートには、推奨の開始希釈率がありますが、適切な希釈率につきましてはご確認ください。

アプリケーション	Abreviews	特記事項
IHC-P		1/1. Ready to use. Boil tissue section in EDTA buffer, pH 8.0 for 10 minutes followed by cooling at room temperature for 20 minutes. Primary antibody incubation for 10 minutes at room temperature.

ターゲット情報

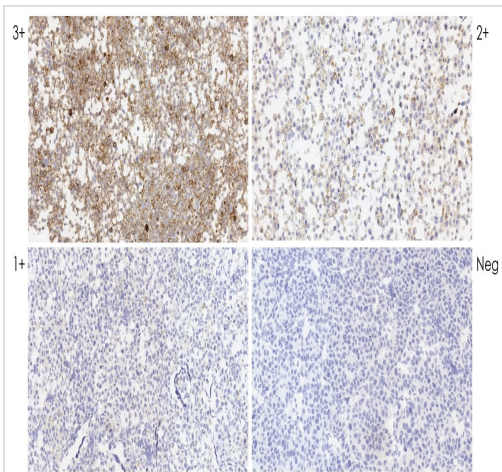
機能	Involved in the costimulatory signal, essential for T-cell proliferation and production of IL10 and IFNG, in an IL2-dependent and a PDCD1-independent manner. Interaction with PDCD1 inhibits T-cell proliferation and cytokine production.
組織特異性	Highly expressed in the heart, skeletal muscle, placenta and lung. Weakly expressed in the thymus, spleen, kidney and liver. Expressed on activated T- and B-cells, dendritic cells, keratinocytes and monocytes.
配列類似性	Belongs to the immunoglobulin superfamily. BTN/MOG family. Contains 1 Ig-like C2-type (immunoglobulin-like) domain. Contains 1 Ig-like V-type (immunoglobulin-like) domain.
細胞内局在	Cell membrane and Endomembrane system.

画像



Immunohistochemistry (Formalin/PFA-fixed paraffin-embedded sections) - Anti-PD-L1 antibody [SP142] - C-terminal, prediluted (ab228463)

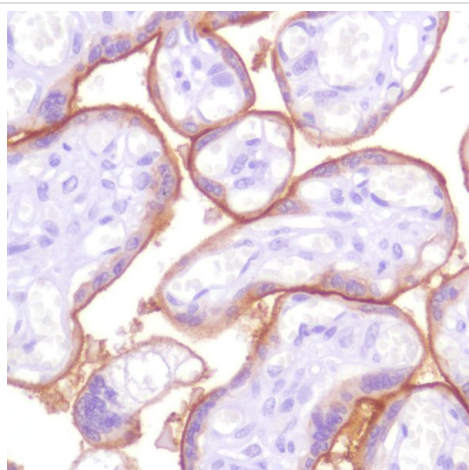
IHC image of [ab228462](#) staining PD-L1 in human tonsil formalin fixed paraffin embedded tissue sections*, performed on a Leica BOND RX (standard Protocol F, Polymer Refine kit). The section was pre-treated using heat mediated antigen retrieval with EDTA buffer (pH9, epitope retrieval solution 2) for 30 mins at 98°C. The section was then incubated with [ab228462](#), 1/400 working dilution, for 15 mins at room temperature and detected using an HRP conjugated compact polymer system for 8 minutes at room temperature. DAB was used as the chromogen for 10 minutes at room temperature. The section was then counterstained with hematoxylin, blued, dehydrated, cleared and mounted with DPX.



Immunohistochemistry (Formalin/PFA-fixed paraffin-embedded sections) - Anti-PD-L1 antibody [SP142] - C-terminal, prediluted (ab228463)

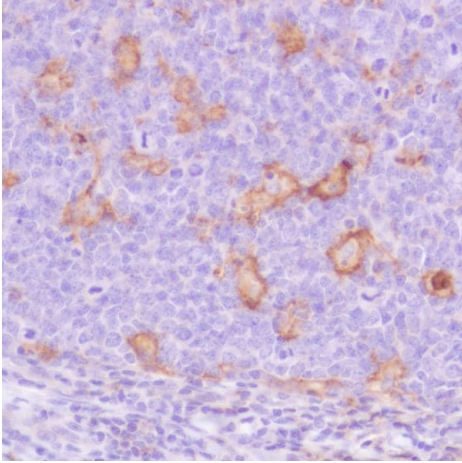
IHC image of **ab228462** staining PD-L1 in PD-L1 Dynamic Range Analyte Control formalin fixed paraffin embedded cell lines (**HistoCyte Laboratories**), performed on a Leica BOND RX (standard Protocol F, Polymer Refine kit). The section was pre-treated using heat mediated antigen retrieval with EDTA buffer (pH9, epitope retrieval solution 2) for 30 mins at 98°C. The section was then incubated with **ab228462**, 1/400 working dilution, for 15 mins at room temperature and detected using an HRP conjugated compact polymer system for 8 minutes at room temperature. DAB was used as the chromogen for 10 minutes at room temperature. The section was then counterstained with hematoxylin, blued, dehydrated, cleared and mounted with DPX.

For other IHC staining systems (automated and non-automated) customers should optimize variable parameters such as antigen retrieval conditions, primary antibody concentration and antibody incubation times.



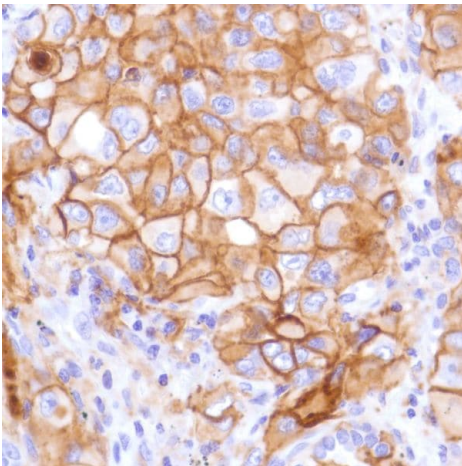
Immunohistochemistry (Formalin/PFA-fixed paraffin-embedded sections) - Anti-PD-L1 antibody [SP142] - C-terminal, prediluted (ab228463)

Formalin-fixed, paraffin-embedded human placenta tissue stained for PD-L1 using ab228463 in immunohistochemical analysis.



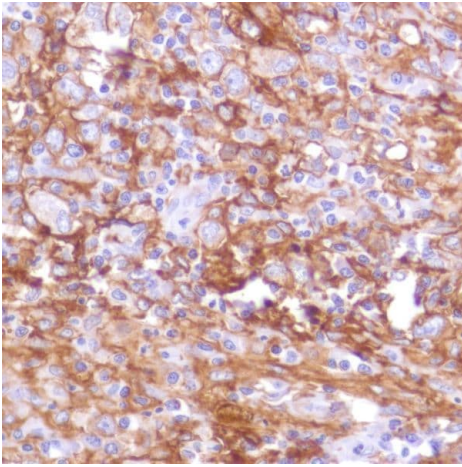
Formalin-fixed, paraffin-embedded human tonsil tissue stained for PD-L1 using ab228463 in immunohistochemical analysis.

Immunohistochemistry (Formalin/PFA-fixed paraffin-embedded sections) - Anti-PD-L1 antibody [SP142] - C-terminal, prediluted (ab228463)



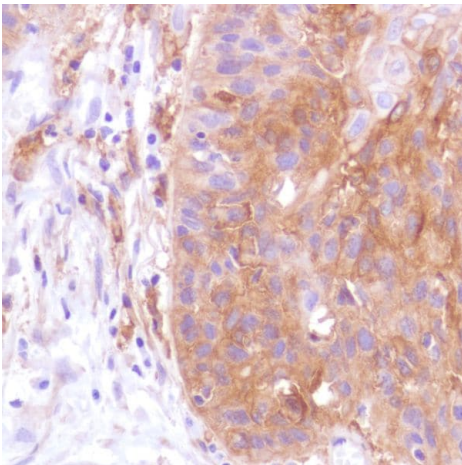
Formalin-fixed, paraffin-embedded human lung squamous cell carcinoma tissue stained for PD-L1 using ab228463 in immunohistochemical analysis.

Immunohistochemistry (Formalin/PFA-fixed paraffin-embedded sections) - Anti-PD-L1 antibody [SP142] - C-terminal, prediluted (ab228463)



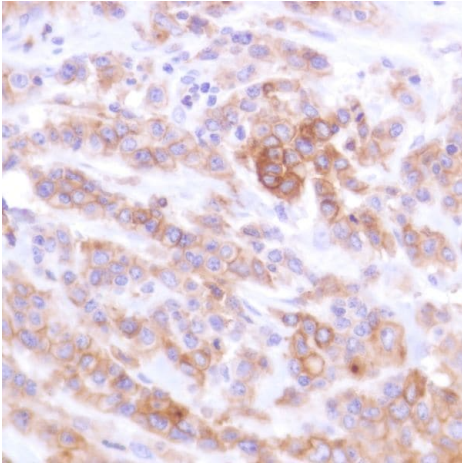
Formalin-fixed, paraffin-embedded human Hodgkin's lymphoma tissue stained for PD-L1 using ab228463 in immunohistochemical analysis.

Immunohistochemistry (Formalin/PFA-fixed paraffin-embedded sections) - Anti-PD-L1 antibody [SP142] - C-terminal, prediluted (ab228463)



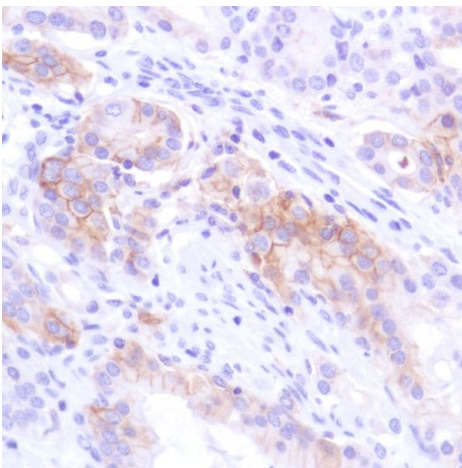
Formalin-fixed, paraffin-embedded human cervical squamous cell carcinoma tissue stained for PD-L1 using ab228463 in immunohistochemical analysis.

Immunohistochemistry (Formalin/PFA-fixed paraffin-embedded sections) - Anti-PD-L1 antibody [SP142] - C-terminal, prediluted (ab228463)



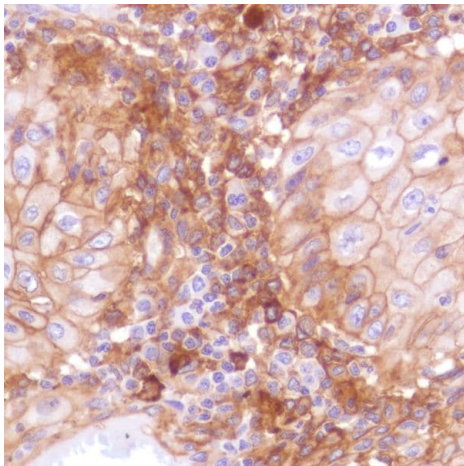
Formalin-fixed, paraffin-embedded human pancreatic adenocarcinoma tissue stained for PD-L1 using ab228463 in immunohistochemical analysis.

Immunohistochemistry (Formalin/PFA-fixed paraffin-embedded sections) - Anti-PD-L1 antibody [SP142] - C-terminal, prediluted (ab228463)



Formalin-fixed, paraffin-embedded human prostate adenocarcinoma tissue stained for PD-L1 using ab228463 in immunohistochemical analysis.

Immunohistochemistry (Formalin/PFA-fixed paraffin-embedded sections) - Anti-PD-L1 antibody [SP142] - C-terminal, prediluted (ab228463)



Formalin-fixed, paraffin-embedded human skin squamous cell carcinoma tissue stained for PD-L1 using ab228463 in immunohistochemical analysis.

Immunohistochemistry (Formalin/PFA-fixed paraffin-embedded sections) - Anti-PD-L1 antibody [SP142] - C-terminal, prediluted (ab228463)

Why choose a recombinant antibody?



Research with confidence
Consistent and reproducible results



Long-term and scalable supply
Recombinant technology



Success from the first experiment
Confirmed specificity



Ethical standards compliant
Animal-free production

Anti-PD-L1 antibody [SP142] - C-terminal, prediluted (ab228463)

Please note: All products are "FOR RESEARCH USE ONLY. NOT FOR USE IN DIAGNOSTIC PROCEDURES"

Our Abpromise to you: Quality guaranteed and expert technical support

- Replacement or refund for products not performing as stated on the datasheet
- Valid for 12 months from date of delivery
- Response to your inquiry within 24 hours
- We provide support in Chinese, English, French, German, Japanese and Spanish

- Extensive multi-media technical resources to help you
- We investigate all quality concerns to ensure our products perform to the highest standards

If the product does not perform as described on this datasheet, we will offer a refund or replacement. For full details of the Abpromise, please visit <https://www.abcam.co.jp/abpromise> or contact our technical team.

Terms and conditions

- Guarantee only valid for products bought direct from Abcam or one of our authorized distributors