

Anti-PD-L1 antibody [ABM4E54] ab210931

★★★★★ [1 Abreviews](#) [21 References](#) [画像数 4](#)

製品の概要

製品名	Anti-PD-L1 antibody [ABM4E54]
製品の詳細	Mouse monoclonal [ABM4E54] to PD-L1
由来種	Mouse
アプリケーション	適用あり: IHC-P, WB, Flow Cyt
種交差性	交差種: Human
免疫原	Recombinant fragment corresponding to Human PD-L1 aa 1-250. Database link: Q9NZQ7-1
	Run BLAST with Run BLAST with
ポジティブ・コントロール	Recombinant protein fragment of Human PD-L1; Human Hodgkin's lymphoma tissue. Programmed death-ligand 1 (PD-L1) expression in various tumor types - http://www.immunotherapyofcancer.org/content/1/S1/P53
特記事項	<p>The Life Science industry has been in the grips of a reproducibility crisis for a number of years. Abcam is leading the way in addressing this with our range of recombinant monoclonal antibodies and knockout edited cell lines for gold-standard validation. Please check that this product meets your needs before purchasing.</p> <p>If you have any questions, special requirements or concerns, please send us an inquiry and/or contact our Support team ahead of purchase. Recommended alternatives for this product can be found below, along with publications, customer reviews and Q&As</p>

製品の特性

製品の状態	Liquid
保存方法	Shipped at 4°C. Store at +4°C short term (1-2 weeks). Upon delivery aliquot. Store at -20°C or -80°C. Avoid freeze / thaw cycle.
バッファー	Preservative: 0.05% Sodium azide Constituents: 99% PBS, 0.05% BSA
精製度	Protein G purified
ポリ/モノ	モノクローナル
クローン名	ABM4E54
アイソタイプ	IgG2a

アプリケーション

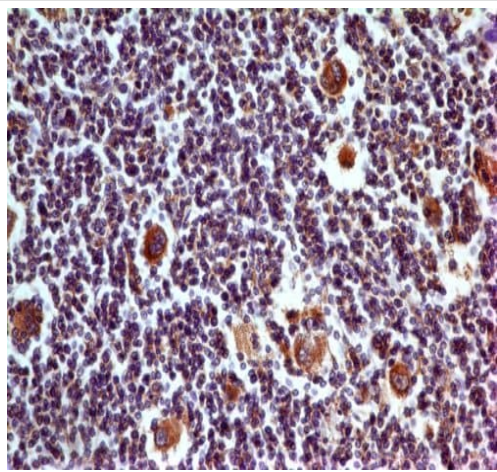
The Abpromise guarantee **Abpromise保証は、次のテスト済みアプリケーションにおけるab210931の使用に適用されず**
 アプリケーションノートには、推奨の開始希釈率がありますが、適切な希釈率につきましてはご検討ください。

アプリケーション	Abreviews	特記事項
IHC-P	★★★★★ (1)	Use a concentration of 5 µg/ml. Perform heat mediated antigen retrieval before commencing with IHC staining protocol.
WB		Use a concentration of 0.5 µg/ml. Predicted molecular weight: 33 kDa.
Flow Cyt		Use a concentration of 1 - 2 µg/ml.

ターゲット情報

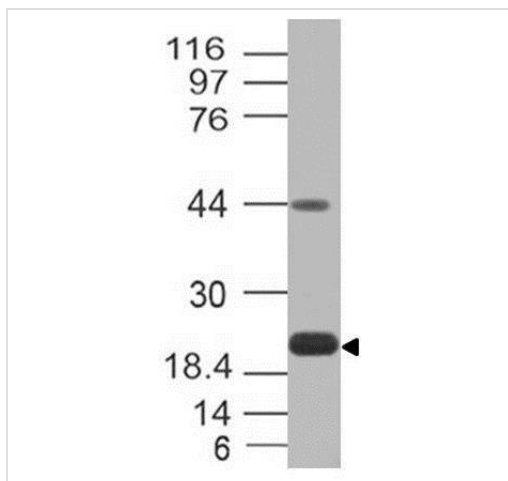
機能	Involved in the costimulatory signal, essential for T-cell proliferation and production of IL10 and IFNG, in an IL2-dependent and a PDCD1-independent manner. Interaction with PDCD1 inhibits T-cell proliferation and cytokine production.
組織特異性	Highly expressed in the heart, skeletal muscle, placenta and lung. Weakly expressed in the thymus, spleen, kidney and liver. Expressed on activated T- and B-cells, dendritic cells, keratinocytes and monocytes.
配列類似性	Belongs to the immunoglobulin superfamily. BTN/MOG family. Contains 1 Ig-like C2-type (immunoglobulin-like) domain. Contains 1 Ig-like V-type (immunoglobulin-like) domain.
細胞内局在	Cell membrane and Endomembrane system.

画像



Immunohistochemistry (Formalin/PFA-fixed paraffin-embedded sections) - Anti-PD-L1 antibody [ABM4E54] (ab210931)

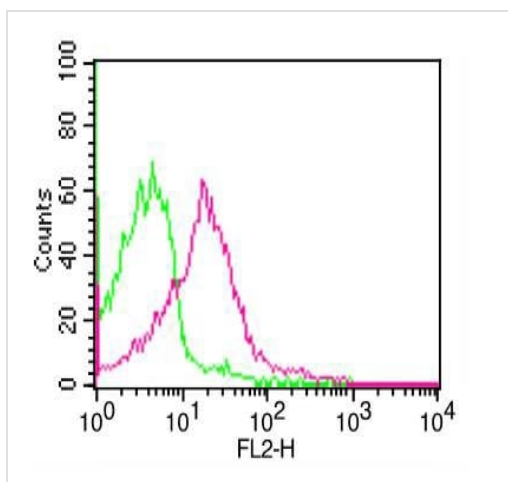
Immunohistochemical analysis of formalin-fixed paraffin-embedded Human Hodgkin's lymphoma tissue, labeling PD-L1 with ab210931 at 5 µg/mL.



Western blot - Anti-PD-L1 antibody [ABM4E54] (ab210931)

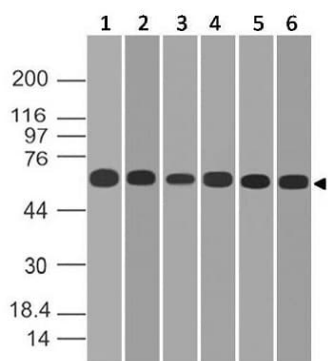
Anti-PD-L1 antibody [ABM4E54] (ab210931) at 0.5 µg/ml + Recombinant protein fragment of Human PD-L1

Predicted band size: 33 kDa



Flow Cytometry - Anti-PD-L1 antibody [ABM4E54] (ab210931)

Cell Surface flow cytometry analysis of PD-L1 in PHA treated human PBMC using 1 µg of ab210931. Green represents isotype control; pink represents ab210931 antibody. Goat anti-mouse PE conjugate was used as secondary antibody.



Western blot - Anti-PD-L1 antibody [ABM4E54]
(ab210931)

All lanes : Anti-PD-L1 antibody [ABM4E54] (ab210931) at 2 µg/ml

Lane 1 : A549 lysate

Lane 2 : MCF-7 lysate

Lane 3 : 293 lysate

Lane 4 : HCT-116 lysate

Lane 5 : Saos2 lysate

Lane 6 : HeLa lysate

Lysates/proteins at 30 µg per lane.

Predicted band size: 33 kDa

Exposure time: 1 minute in film and 30 seconds in imager.

Please note: All products are "FOR RESEARCH USE ONLY. NOT FOR USE IN DIAGNOSTIC PROCEDURES"

Our Abpromise to you: Quality guaranteed and expert technical support

- Replacement or refund for products not performing as stated on the datasheet
- Valid for 12 months from date of delivery
- Response to your inquiry within 24 hours
- We provide support in Chinese, English, French, German, Japanese and Spanish
- Extensive multi-media technical resources to help you
- We investigate all quality concerns to ensure our products perform to the highest standards

If the product does not perform as described on this datasheet, we will offer a refund or replacement. For full details of the Abpromise, please visit <https://www.abcam.co.jp/abpromise> or contact our technical team.

Terms and conditions

- Guarantee only valid for products bought direct from Abcam or one of our authorized distributors