





Anti-PCSK2 antibody ab3533

6 References [画像数 3](#)

製品の概要

製品名	Anti-PCSK2 antibody
製品の詳細	Rabbit polyclonal to PCSK2
由来種	Rabbit
アプリケーション	適用あり: ICC/IF, WB
種交差性	交差種: Mouse, Human 交差が予測される動物種: Rat, Cow, Pig 
免疫原	Synthetic peptide corresponding to Mouse PCSK2 aa 600-700.  Run BLAST with  Run BLAST with 
特記事項	<p>The Life Science industry has been in the grips of a reproducibility crisis for a number of years. Abcam is leading the way in addressing this with our range of recombinant monoclonal antibodies and knockout edited cell lines for gold-standard validation. Please check that this product meets your needs before purchasing.</p> <p>If you have any questions, special requirements or concerns, please send us an inquiry and/or contact our Support team ahead of purchase. Recommended alternatives for this product can be found below, along with publications, customer reviews and Q&As</p>

製品の特性

製品の状態	Liquid
保存方法	Shipped at 4°C. Store at +4°C short term (1-2 weeks). Upon delivery aliquot. Store at -20°C or -80°C. Avoid freeze / thaw cycle.
バッファー	Preservative: 0.05% Sodium azide Constituents: 0.1% BSA, 99% PBS
精製度	Immunogen affinity purified
一次抗体 備考	<p>The subtilisin-like Prohormone Convertase (PC) family is a group of cellular enzymes that cleave most prohormones and neuropeptide precursors. Numerous other cellular proteins, some viral proteins, and bacterial toxins that are transported by the constitutive secretory pathway are also targeted for maturation by PCs. PC family members share structural similarities, which include a heterogeneous ~10 kDa amino-terminal proregion, a highly conserved ~55 kDa subtilisin-like catalytic domain, and carboxyl-terminal domain that is heterogeneous in length and sequence. These enzymes become catalytically active following proregion cleavage within the appropriate</p>

cellular compartment. The subcellular localization of PC family members varies. Immunolocalization studies show that PC1 is found in the perinuclear region as well as the trans-Golgi network, whereas PC2 can be found in the trans-Golgi network as well as diffusely distributed in the peripheral cytoplasm.

ポリ/モノ

ポリクローナル

アイソタイプ

IgG

アプリケーション

The Abpromise guarantee Abpromise保証は、 次のテスト済みアプリケーションにおけるab3533の使用に適用されます
アプリケーションノートには、推奨の開始希釈率がありますが、適切な希釈率につきましてはご確認ください。

アプリケーション	Abreviews	特記事項
ICC/IF		1/20 - 1/200.
WB		Use a concentration of 2 µg/ml. This antibody detects an ~65 kDa protein representing Proprotein 2 from alpha TC 6 cell extract.

ターゲット情報

機能

Involved in the processing of hormone and other protein precursors at sites comprised of pairs of basic amino acid residues.

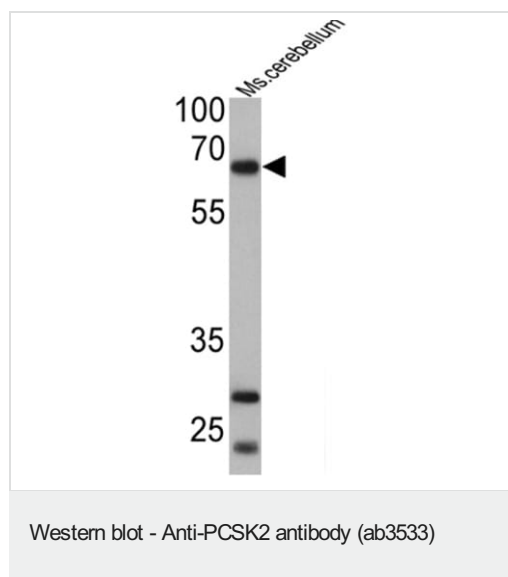
配列類似性

Belongs to the peptidase S8 family. Furin subfamily.

細胞内局在

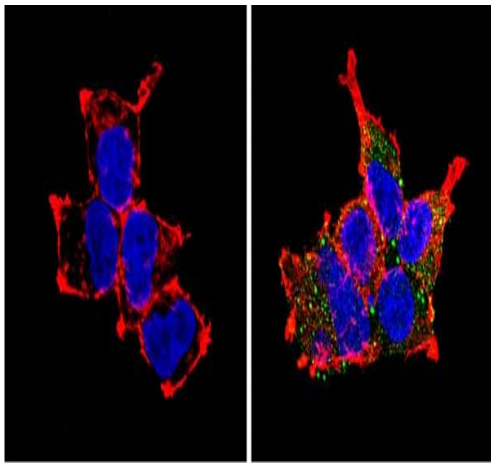
Cytoplasmic vesicle > secretory vesicle. Localized in the secretion granules.

画像



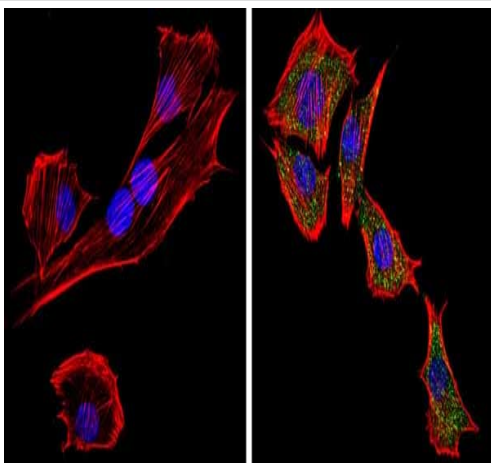
Anti-PCSK2 antibody (ab3533) at 1/500 dilution + Mouse cerebellum cell lysate at 25 µg

Observed band size: 65 kDa



Immunocytochemistry/ Immunofluorescence - Anti-PCSK2 antibody (ab3533)

Immunocytochemistry/Immunofluorescent analysis of PCSK2 (green) showing staining in the cytoplasm of HEK293 cells. Formalin-fixed cells were permeabilized with 0.1% Triton X-100 in TBS for 5-10 minutes and blocked with 3% BSA-PBS for 30 minutes at room temperature. Cells were probed with ab3533 in 3% BSA-PBS at a dilution of 1:100 and incubated overnight at 4°C in a humidified chamber. Cells were washed with PBST and incubated with a DyLight-conjugated secondary antibody in PBS at room temperature in the dark. F-actin (red) was stained with a fluorescent red phalloidin and nuclei (blue) were stained with Hoechst or DAPI. Images were taken at a magnification of 60x.



Immunocytochemistry/ Immunofluorescence - Anti-PCSK2 antibody (ab3533)

Immunocytochemistry/Immunofluorescent analysis of PCSK2 (green) showing staining in the cytoplasm of C2C12 cells. Formalin-fixed cells were permeabilized with 0.1% Triton X-100 in TBS for 5-10 minutes and blocked with 3% BSA-PBS for 30 minutes at room temperature. Cells were probed with ab3533 in 3% BSA-PBS at a dilution of 1:100 and incubated overnight at 4°C in a humidified chamber. Cells were washed with PBST and incubated with a DyLight-conjugated secondary antibody in PBS at room temperature in the dark. F-actin (red) was stained with a fluorescent red phalloidin and nuclei (blue) were stained with Hoechst or DAPI. Images were taken at a magnification of 60x.

Please note: All products are "FOR RESEARCH USE ONLY. NOT FOR USE IN DIAGNOSTIC PROCEDURES"

Our Abpromise to you: Quality guaranteed and expert technical support

- Replacement or refund for products not performing as stated on the datasheet
- Valid for 12 months from date of delivery
- Response to your inquiry within 24 hours
- We provide support in Chinese, English, French, German, Japanese and Spanish
- Extensive multi-media technical resources to help you
- We investigate all quality concerns to ensure our products perform to the highest standards

If the product does not perform as described on this datasheet, we will offer a refund or replacement. For full details of the Abpromise, please visit <https://www.abcam.co.jp/abpromise> or contact our technical team.

Terms and conditions

- Guarantee only valid for products bought direct from Abcam or one of our authorized distributors