

Anti-PCK2 antibody [EPR14224] - C-terminal ab187145

リコンビナント RabMAb

★★★★☆ **1 Abreviews** **6 References** **画像数 7**

製品の概要

製品名	Anti-PCK2 antibody [EPR14224] - C-terminal
製品の詳細	Rabbit monoclonal [EPR14224] to PCK2 - C-terminal
由来種	Rabbit
アプリケーション	適用あり: Flow Cyt (Intra), WB, IHC-P, ICC/IF
種交差性	交差種: Mouse, Rat, Human
免疫原	Synthetic peptide. This information is proprietary to Abcam and/or its suppliers.
ポジティブ・コントロール	HepG2, MCF7, HeLa, mouse brain, mouse kidney, rat brain, rat kidney and rat spleen lysates; Human liver tissue; HeLa cells.
特記事項	<p>This product is a recombinant monoclonal antibody, which offers several advantages including:</p> <ul style="list-style-type: none">- High batch-to-batch consistency and reproducibility- Improved sensitivity and specificity- Long-term security of supply- Animal-free production <p>For more information see here.</p> <p>Our RabMAb[®] technology is a patented hybridoma-based technology for making rabbit monoclonal antibodies. For details on our patents, please refer to RabMAb[®] patents.</p>

製品の特性

製品の状態	Liquid
保存方法	Shipped at 4°C. Store at +4°C short term (1-2 weeks). Upon delivery aliquot. Store at -20°C long term. Avoid freeze / thaw cycle.
バッファー	pH: 7.2 Preservative: 0.01% Sodium azide Constituents: 59% PBS, 40% Glycerol (glycerin, glycerine), 0.05% BSA
精製度	Protein A purified
ポリ/モノ	モノクローナル
クローン名	EPR14224
アイソタイプ	IgG

アプリケーション

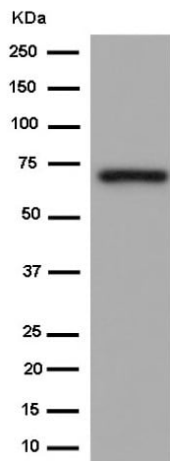
The Abpromise guarantee **Abpromise保証は、次のテスト済みアプリケーションにおけるab187145の使用に適用されず**
アプリケーションノートには、推奨の開始希釈率がありますが、適切な希釈率につきましてはご検討ください。

アプリケーション	Abreviews	特記事項
Flow Cyt (Intra)		1/50. ab172730 - Rabbit monoclonal IgG, is suitable for use as an isotype control with this antibody.
WB	★★★★★ (1)	1/1000 - 1/10000. Detects a band of approximately 71 kDa (predicted molecular weight: 71 kDa).
IHC-P		1/500. Perform heat mediated antigen retrieval with Tris/EDTA buffer pH 9.0 before commencing with IHC staining protocol.
ICC/IF		1/500.

ターゲット情報

機能	Catalyzes the conversion of oxaloacetate (OAA) to phosphoenolpyruvate (PEP), the rate-limiting step in the metabolic pathway that produces glucose from lactate and other precursors derived from the citric acid cycle.
パスウェイ	Carbohydrate biosynthesis; gluconeogenesis.
関連疾患	Defects in PCK2 are the cause of mitochondrial phosphoenolpyruvate carboxykinase deficiency (M-PEPCKD) [MIM:261650]. A metabolic disorder resulting from impaired gluconeogenesis. It is a rare disease with less than 10 cases reported in the literature. Clinical characteristics include hypotonia, hepatomegaly, failure to thrive, lactic acidosis and hypoglycemia. Autopsy reveals fatty infiltration of both the liver and kidneys. The disorder is transmitted as an autosomal recessive trait.
配列類似性	Belongs to the phosphoenolpyruvate carboxykinase [GTP] family.
翻訳後修飾	Phosphorylated upon DNA damage, probably by ATM or ATR.
細胞内局在	Mitochondrion.

画像



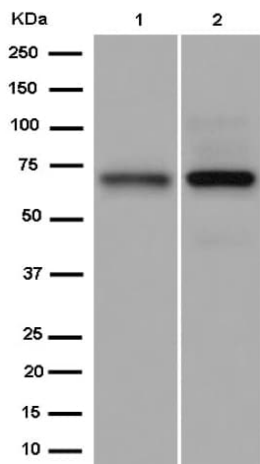
Western blot - Anti-PCK2 antibody [EPR14224] - C-terminal (ab187145)

Anti-PCK2 antibody [EPR14224] - C-terminal (ab187145) at 1/10000 dilution + HepG2 lysate at 20 µg

Secondary

Goat Anti-Rabbit IgG, (H+L), Peroxidase conjugated at 1/1000 dilution

Predicted band size: 71 kDa



Western blot - Anti-PCK2 antibody [EPR14224] - C-terminal (ab187145)

All lanes : Anti-PCK2 antibody [EPR14224] - C-terminal (ab187145) at 1/1000 dilution

Lane 1 : MCF7 lysate

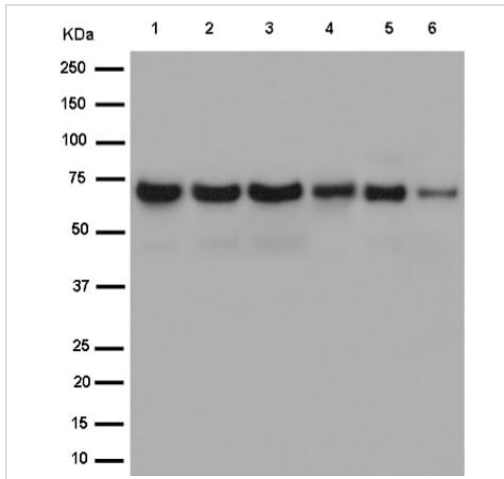
Lane 2 : Hela lysate

Lysates/proteins at 20 µg per lane.

Secondary

All lanes : Goat Anti-Rabbit IgG, (H+L), Peroxidase conjugated at 1/1000 dilution

Predicted band size: 71 kDa



Western blot - Anti-PCK2 antibody [EPR14224] - C-terminal (ab187145)

All lanes : Anti-PCK2 antibody [EPR14224] - C-terminal (ab187145) at 1/1000 dilution

Lane 1 : Mouse brain lysate

Lane 2 : Mouse kidney lysate

Lane 3 : Mouse spleen lysate

Lane 4 : Rat brain lysate

Lane 5 : Rat kidney lysate

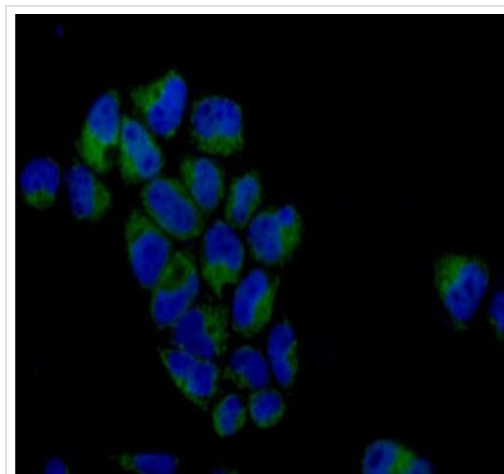
Lane 6 : Rat spleen lysate

Lysates/proteins at 10 µg per lane.

Secondary

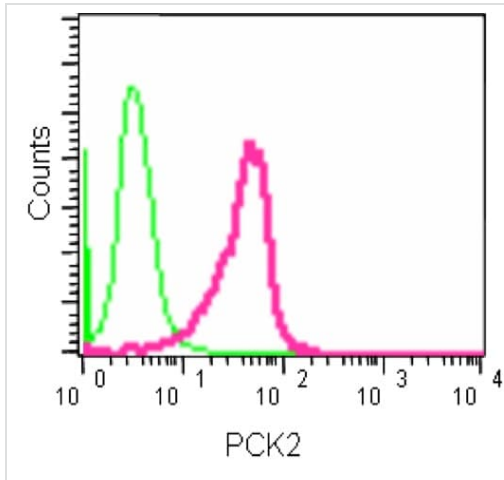
All lanes : Goat Anti-Rabbit IgG, (H+L), Peroxidase conjugated at 1/1000 dilution

Predicted band size: 71 kDa



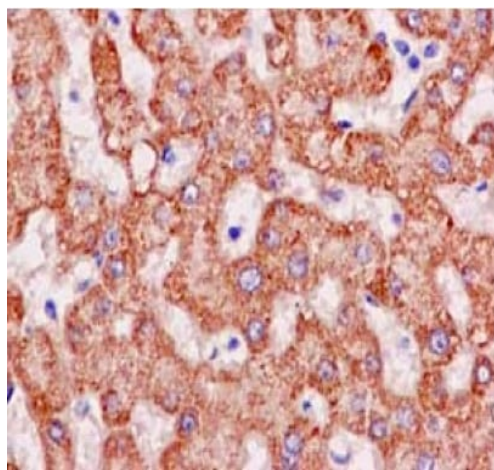
Immunocytochemistry/ Immunofluorescence - Anti-PCK2 antibody [EPR14224] - C-terminal (ab187145)

Immunofluorescence analysis of 4% paraformaldehyde-fixed HeLa cells, labeling PCK2 (green) with ab187145 at 1/500 dilution. Alexa Fluor®488-conjugated goat anti-rabbit IgG was used as a secondary antibody at 1/200 dilution. Nuclei were counterstained with DAPI (blue).



Flow Cytometry (Intracellular) - Anti-PCK2 antibody
[EPR14224] - C-terminal (ab187145)

Intracellular Flow Cytometry analysis of PCK2 expression in 2% paraformaldehyde-fixed HeLa cells using ab187145 at 1/50 dilution (red) and a rabbit IgG as negative control (green). A FITC-conjugated goat anti-rabbit IgG (1/150) was used as the secondary antibody.







Immunohistochemistry (Formalin/PFA-fixed paraffin-embedded sections) - Anti-PCK2 antibody
[EPR14224] - C-terminal (ab187145)

Immunohistochemical analysis of paraffin-embedded Human liver tissue, labeling PCK2 with ab187145 at 1/500 dilution. Detected using HRP Polymer for Rabbit IgG and counter-stained using hematoxylin.

Perform heat mediated antigen retrieval with EDTA buffer pH 9 before commencing with IHC staining protocol.

Why choose a recombinant antibody?

 <p>Research with confidence Consistent and reproducible results</p>	 <p>Long-term and scalable supply Recombinant technology</p>
 <p>Success from the first experiment Confirmed specificity</p>	 <p>Ethical standards compliant Animal-free production</p>

Anti-PCK2 antibody [EPR14224] - C-terminal
(ab187145)

Please note: All products are "FOR RESEARCH USE ONLY. NOT FOR USE IN DIAGNOSTIC PROCEDURES"

Our Abpromise to you: Quality guaranteed and expert technical support

- Replacement or refund for products not performing as stated on the datasheet
- Valid for 12 months from date of delivery
- Response to your inquiry within 24 hours
- We provide support in Chinese, English, French, German, Japanese and Spanish
- Extensive multi-media technical resources to help you
- We investigate all quality concerns to ensure our products perform to the highest standards

If the product does not perform as described on this datasheet, we will offer a refund or replacement. For full details of the Abpromise, please visit <https://www.abcam.co.jp/abpromise> or contact our technical team.

Terms and conditions

- Guarantee only valid for products bought direct from Abcam or one of our authorized distributors