


Anti-PCBD1 antibody [EPR9760(B)] ab138518

KO 評価済 リコンビナント RabMAb

画像数 4

製品の概要

製品名	Anti-PCBD1 antibody [EPR9760(B)]
製品の詳細	Rabbit monoclonal [EPR9760(B)] to PCBD1
由来種	Rabbit
アプリケーション	適用あり: WB, IHC-P
種交差性	交差種: Human 交差が予測される動物種: Mouse, Rat 
免疫原	Synthetic peptide within Human PCBD1 aa 1-100 (N terminal). The exact sequence is proprietary.
ポジティブ・コントロール	WB: Human ovary cancer, fetal heart, fetal liver, HEK293T and Caco-2 cell lysates. IHC-P: Human colon tissue.
特記事項	This product is a recombinant monoclonal antibody, which offers several advantages including: <ul style="list-style-type: none">- High batch-to-batch consistency and reproducibility- Improved sensitivity and specificity- Long-term security of supply- Animal-free production For more information see here . Our RabMAb [®] technology is a patented hybridoma-based technology for making rabbit monoclonal antibodies. For details on our patents, please refer to RabMAb[®] patents .

製品の特性

製品の状態	Liquid
保存方法	Shipped at 4°C. Upon delivery aliquot and store at -20°C. Avoid freeze / thaw cycles.
バッファー	pH: 7.2 Preservative: 0.01% Sodium azide Constituents: 9% PBS, 40% Glycerol (glycerin, glycerine), 0.05% BSA, 50% Tissue culture supernatant
精製度	Protein A purified
ポリ/モノ	モノクローナル

クローン名 EPR9760(B)
アイソタイプ IgG

アプリケーション

The Abpromise guarantee **Abpromise保証は、次のテスト済みアプリケーションにおけるab138518の使用に適用されます**
アプリケーションノートには、推奨の開始希釈率がありますが、適切な希釈率につきましてはご検討ください。

アプリケーション	Abreviews	特記事項
WB		1/1000 - 1/10000. Detects a band of approximately 12 kDa (predicted molecular weight: 12 kDa).
IHC-P		1/50 - 1/100. Perform heat mediated antigen retrieval with citrate buffer pH 6 before commencing with IHC staining protocol.

ターゲット情報

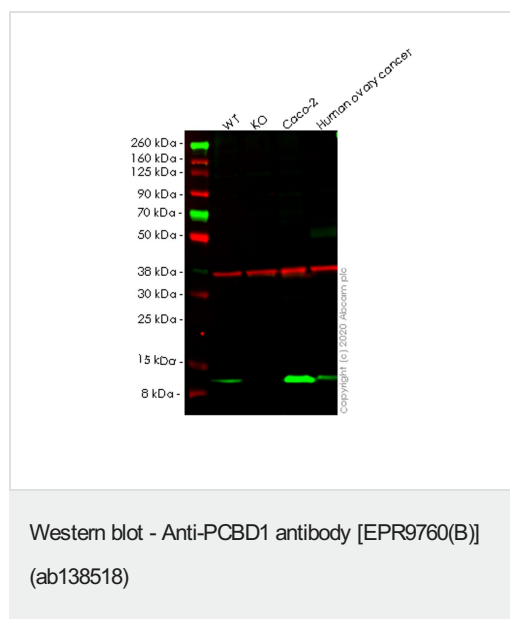
機能 Involved in tetrahydrobiopterin biosynthesis. Seems to both prevent the formation of 7-pterins and accelerate the formation of quinonoid-BH2. Coactivator for HNF1A-dependent transcription. Regulates the dimerization of homeodomain protein HNF1A and enhances its transcriptional activity.

関連疾患 Defects in PCBD1 are the cause of BH4-deficient hyperphenylalaninemia type D (HPABH4D) [MIM:264070]; also known as hyperphenylalaninemia with primapterinuria. HPABH4D is characterized by the excretion of 7-substituted pterins in the urine of affected patients.

配列類似性 Belongs to the pterin-4-alpha-carbinolamine dehydratase family.

細胞内局在 Cytoplasm. Nucleus. Cytoplasmic and/or nuclear.

画像



All lanes : Anti-PCBD1 antibody [EPR9760(B)] (ab138518) at 1/500 dilution

Lane 1 : Wild-type HEK293T cell lysate

Lane 2 : PCBD1 knockout HEK293T cell lysate

Lane 3 : Caco-2 cell lysate

Lane 4 : Human ovary cancer tissue lysate

Lysates/proteins at 20 µg per lane.

Secondary

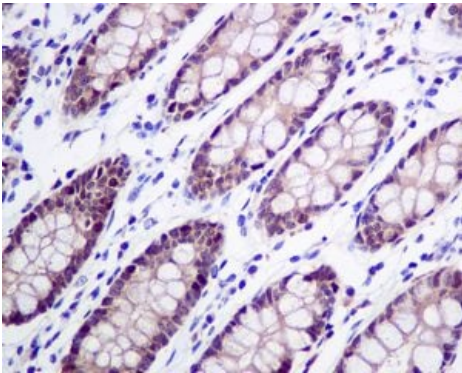
All lanes : Goat anti-Rabbit IgG H&L (IRDye® 800CW) preadsorbed (**ab216773**) at 1/10000 dilution

Predicted band size: 12 kDa

Observed band size: 12 kDa

Lanes 1-4: Merged signal (red and green). Green - ab138518 observed at 12 kDa. Red - loading control **ab8245** observed at 36 kDa.

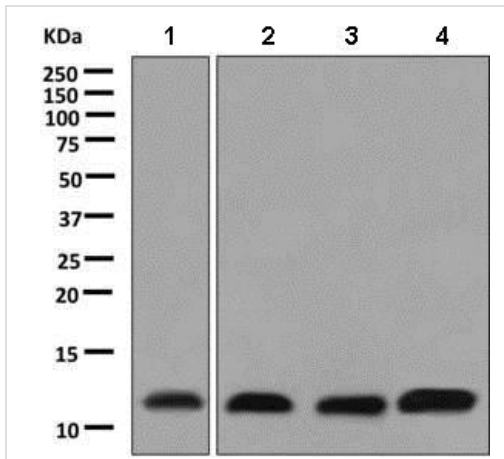
ab138518 Anti-PCBD1 antibody [EPR9760(B)] was shown to specifically react with PCBD1 in wild-type HEK293T cells. Loss of signal was observed when knockout cell line **ab266261** (knockout cell lysate **ab258095**) was used. Wild-type and PCBD1 knockout samples were subjected to SDS-PAGE. ab138518 and Anti-GAPDH antibody [6C5] - Loading Control (**ab8245**) were incubated overnight at 4°C at 1 in 500 dilution and 1 in 20000 dilution respectively. Blots were developed with Goat anti-Rabbit IgG H&L (IRDye® 800CW) preadsorbed (**ab216773**) and Goat anti-Mouse IgG H&L (IRDye® 680RD) preadsorbed (**ab216776**) secondary antibodies at 1 in 20000 dilution for 1 hour at room temperature before imaging.



Immunohistochemistry (Formalin/PFA-fixed paraffin-embedded sections) - Anti-PCBD1 antibody [EPR9760(B)] (ab138518)

Immunohistochemical analysis of paraffin embedded Human colon tissue labelling PCBD1 with ab138518 antibody at a dilution of 1/50.

Perform heat mediated antigen retrieval with citrate buffer pH 6 before commencing with IHC staining protocol.



Western blot - Anti-PCBD1 antibody [EPR9760(B)] (ab138518)

All lanes : Anti-PCBD1 antibody [EPR9760(B)] (ab138518) at 1/1000 dilution

Lane 1 : Human ovary cancer cell lysate

Lane 2 : Fetal heart cell lysate

Lane 3 : Fetal liver cell lysate

Lane 4 : Caco-2 cell lysate

Lysates/proteins at 10 µg per lane.





Secondary

All lanes : HRP labelled goat anti-rabbit at 1/2000 dilution

Predicted band size: 12 kDa

Observed band size: 12 kDa

Why choose a recombinant antibody?

 Research with confidence Consistent and reproducible results	 Long-term and scalable supply Recombinant technology
 Success from the first experiment Confirmed specificity	 Ethical standards compliant Animal-free production

Anti-PCBD1 antibody [EPR9760(B)] (ab138518)

Please note: All products are "FOR RESEARCH USE ONLY. NOT FOR USE IN DIAGNOSTIC PROCEDURES"

Our Abpromise to you: Quality guaranteed and expert technical support

- Replacement or refund for products not performing as stated on the datasheet
- Valid for 12 months from date of delivery
- Response to your inquiry within 24 hours

- We provide support in Chinese, English, French, German, Japanese and Spanish
- Extensive multi-media technical resources to help you
- We investigate all quality concerns to ensure our products perform to the highest standards

If the product does not perform as described on this datasheet, we will offer a refund or replacement. For full details of the Abpromise, please visit <https://www.abcam.co.jp/abpromise> or contact our technical team.

Terms and conditions

- Guarantee only valid for products bought direct from Abcam or one of our authorized distributors