


# Anti-PC4 antibody ab72132

**3 References** [画像数 4](#)

### 製品の概要

製品名	Anti-PC4 antibody
製品の詳細	Rabbit polyclonal to PC4
由来種	Rabbit
アプリケーション	<b>適用あり:</b> IHC-P, WB, IP
種交差性	<b>交差種:</b> Human <b>交差が予測される動物種:</b> Horse, Guinea pig, Cow, Pig, Chimpanzee, Rhesus monkey, Orangutan, Elephant 
免疫原	Synthetic peptide corresponding to a region between residues 25 and 75 of human PC4, NP_006704.2.
ポジティブ・コントロール	Whole cell lysate from Hela cells.
特記事項	<p>The Life Science industry has been in the grips of a reproducibility crisis for a number of years. Abcam is leading the way in addressing this with our range of recombinant monoclonal antibodies and knockout edited cell lines for gold-standard validation. Please check that this product meets your needs before purchasing.</p> <p>If you have any questions, special requirements or concerns, please send us an inquiry and/or contact our Support team ahead of purchase. Recommended alternatives for this product can be found below, along with publications, customer reviews and Q&amp;As</p>

### 製品の特性

製品の状態	Liquid
保存方法	Shipped at 4°C. Upon delivery aliquot and store at -20°C. Avoid freeze / thaw cycles.
バッファー	pH: 6.8 Preservative: 0.09% Sodium azide Constituents: 0.1% BSA, Tris buffered saline
精製度	Immunogen affinity purified
ポリ/モノ	ポリクローナル
アイソタイプ	IgG

### アプリケーション

## The Abpromise guarantee

**Abpromise保証は、次のテスト済みアプリケーションにおけるab72132の使用に適用されます**

アプリケーションノートには、推奨の開始希釈率がありますが、適切な希釈率につきましてはご検討ください。

アプリケーション	Abreviews	特記事項
IHC-P		Use a concentration of 5 µg/ml. Perform heat mediated antigen retrieval with citrate buffer pH 6 before commencing with IHC staining protocol.
WB		1/2000 - 1/10000. Detects a band of approximately 18, 190 kDa (predicted molecular weight: 14 kDa).
IP		Use at 2-5 µg/mg of lysate.

## ターゲット情報

### 機能

General coactivator that functions cooperatively with TAFs and mediates functional interactions between upstream activators and the general transcriptional machinery. May be involved in stabilizing the multiprotein transcription complex. Binds single-stranded DNA. Also binds, in vitro, non-specifically to double-stranded DNA (ds DNA).

### 配列類似性

Belongs to the transcriptional coactivator PC4 family.

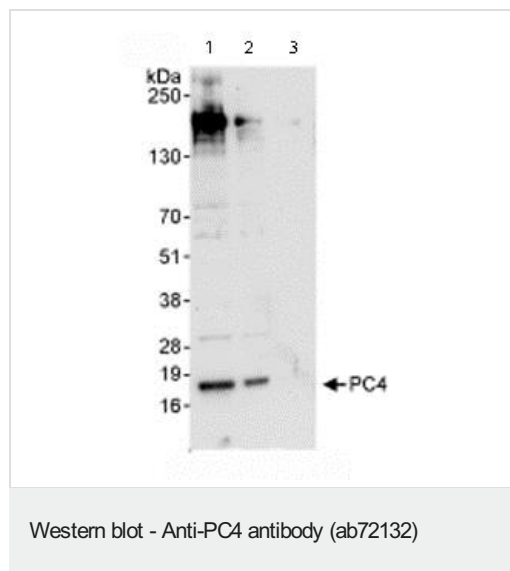
### 翻訳後修飾

Activity is controlled by protein kinases that target the regulatory region. Phosphorylation inactivates both ds DNA-binding and cofactor function, but does not affect binding to ssDNA. Seems to be phosphorylated in vivo by CK2 in at least 7 sites in the N-terminal Ser-rich region.

### 細胞内局在

Nucleus.

## 画像



**All lanes :** Anti-PC4 antibody (ab72132) at 0.04 µg/ml

**Lane 1 :** Whole cell lysate from HeLa cells at 50 µg

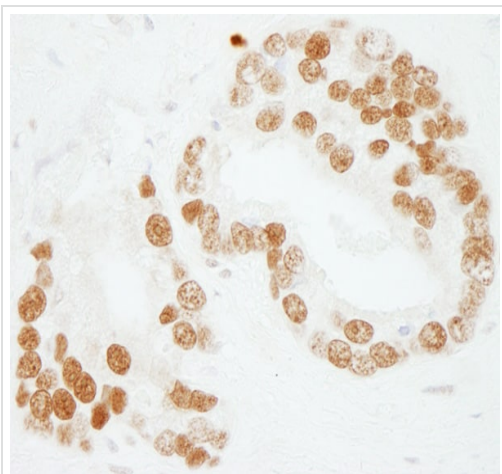
**Lane 2 :** Whole cell lysate from HeLa cells at 15 µg

**Lane 3 :** Whole cell lysate from HeLa cells at 5 µg

**Predicted band size:** 14 kDa

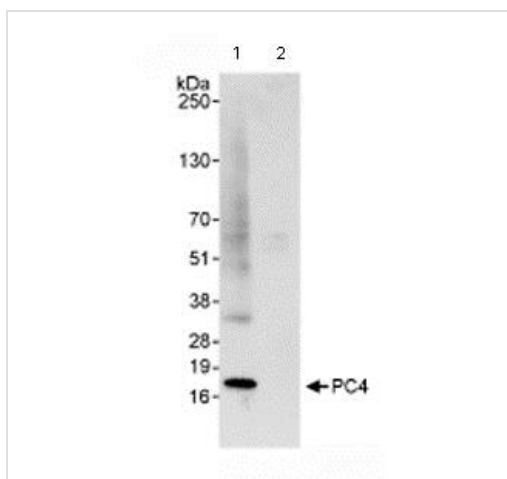
**Observed band size:** 18 kDa

**Additional bands at:** 190 kDa. We are unsure as to the identity of these extra bands.



Immunohistochemistry (Formalin/PFA-fixed paraffin-embedded sections) - Anti-PC4 antibody (ab72132)

Immunohistochemistry (Formalin/PFA-fixed paraffin-embedded sections) analysis of human prostate carcinoma tissue labelling PC4 with ab72132 at 1/200 (1µg/ml). Detection: DAB.



Immunoprecipitation - Anti-PC4 antibody (ab72132)

Immunoprecipitation/ Western Blot of PC4.

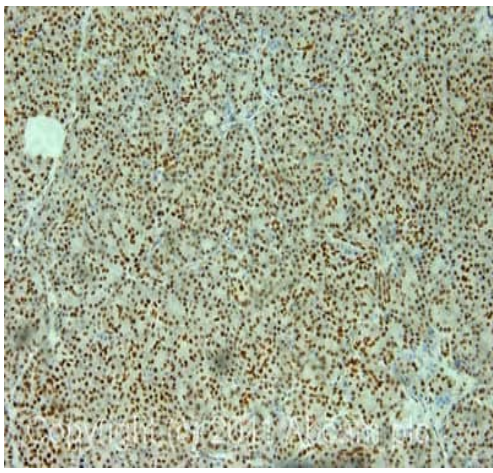
Lane 1: ab72132 at 3µg/mg whole cell lysate.

Lane 2: Control IgG.

ab72132 at 0.1µg/ml for WB.

Whole cell lysate from Hela cells at 1mg for IP, 20% of IP loaded.

Detection: Chemiluminescence with an exposure time of 30 seconds.



Immunohistochemistry (Formalin/PFA-fixed paraffin-embedded sections) - Anti-PC4 antibody (ab72132)

IHC image of ab72132 staining in human normal pancreas formalin fixed paraffin embedded tissue section, performed on a Leica Bond™ system using the standard protocol F. The section was pre-treated using heat mediated antigen retrieval with sodium citrate buffer (pH6, epitope retrieval solution 1) for 20 mins. The section was then incubated with ab72132, 5µg/ml, for 15 mins at room temperature and detected using an HRP conjugated compact polymer system. DAB was used as the chromogen. The section was then counterstained with haematoxylin and mounted with DPX.

For other IHC staining systems (automated and non-automated) customers should optimize variable parameters such as antigen retrieval conditions, primary antibody concentration and antibody incubation times.

**Please note:** All products are "FOR RESEARCH USE ONLY. NOT FOR USE IN DIAGNOSTIC PROCEDURES"

### Our Abpromise to you: Quality guaranteed and expert technical support

- Replacement or refund for products not performing as stated on the datasheet
- Valid for 12 months from date of delivery
- Response to your inquiry within 24 hours
- We provide support in Chinese, English, French, German, Japanese and Spanish
- Extensive multi-media technical resources to help you
- We investigate all quality concerns to ensure our products perform to the highest standards

If the product does not perform as described on this datasheet, we will offer a refund or replacement. For full details of the Abpromise, please visit <https://www.abcam.co.jp/abpromise> or contact our technical team.

### Terms and conditions

- Guarantee only valid for products bought direct from Abcam or one of our authorized distributors