


### Anti-Patched / PTCH1 antibody ab109096

★★★★★ [1 Abreviews](#) [3 References](#) [画像数 2](#)

#### 製品の概要

製品名	Anti-Patched / PTCH1 antibody
製品の詳細	Goat polyclonal to Patched / PTCH1
由来種	Goat
特異性	ab109096 is expected to recognise all reported isoforms. Variants (NP_001077073.1; NP_001077074.1; NP_001077075.1; NP_001077076.1 encode the same isoform.
アプリケーション	<b>適用あり:</b> ICC/IF, IHC-P
種交差性	<b>交差種:</b> Human <b>交差が予測される動物種:</b> Rat, Chicken, Xenopus laevis 
免疫原	Synthetic peptide corresponding to Human Patched/ PTCH1 aa 1400 to the C-terminus (C terminal). Database link: <a href="#">Q13635</a>

 [Run BLAST with](#)

 [Run BLAST with](#)

#### ポジティブ・コントロール

Human Colon tissue.

#### 特記事項

The Life Science industry has been in the grips of a reproducibility crisis for a number of years. Abcam is leading the way in addressing this with our range of recombinant monoclonal antibodies and knockout edited cell lines for gold-standard validation. Please check that this product meets your needs before purchasing.

If you have any questions, special requirements or concerns, please send us an inquiry and/or contact our Support team ahead of purchase. Recommended alternatives for this product can be found below, along with publications, customer reviews and Q&As

#### 製品の特性

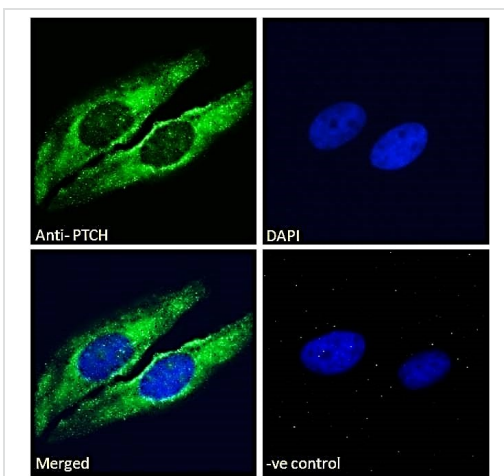
製品の状態	Liquid
保存方法	Shipped at 4°C. Upon delivery aliquot and store at -20°C. Avoid freeze / thaw cycles.
バッファー	pH: 7.30 Preservative: 0.02% Sodium azide Constituents: Tris buffered saline, 0.5% BSA
精製度	Immunogen affinity purified
特記事項 (精製)	ab109096 is purified from Goat serum by ammonium sulphate precipitation followed by antigen affinity chromatography using the immunizing peptide.





Immunohistochemistry (Formalin/PFA-fixed paraffin-embedded sections) analysis of Human cortex tissue labelling Patched / PTCH1 with ab109096 at 8 µg/mL.

Immunohistochemistry (Formalin/PFA-fixed paraffin-embedded sections) - Anti-Patched / PTCH1 antibody (ab109096)



Immunofluorescence analysis of paraformaldehyde fixed HeLa cells, permeabilized with 0.15% Triton. Primary incubation 1hr at 10 ug/mL followed by Alexa Fluor 488 secondary antibody at 2 ug/mL, showing Golgi/cytoplasmic staining. The nuclear stain is DAPI (blue). Negative control: Unimmunized goat IgG at 10 ug/mL followed by Alexa Fluor 488 secondary antibody at 2 ug/mL.

Immunocytochemistry/ Immunofluorescence - Anti-Patched / PTCH1 antibody (ab109096)

**Please note:** All products are "FOR RESEARCH USE ONLY. NOT FOR USE IN DIAGNOSTIC PROCEDURES"

### Our Abpromise to you: Quality guaranteed and expert technical support

- Replacement or refund for products not performing as stated on the datasheet
- Valid for 12 months from date of delivery
- Response to your inquiry within 24 hours
- We provide support in Chinese, English, French, German, Japanese and Spanish
- Extensive multi-media technical resources to help you
- We investigate all quality concerns to ensure our products perform to the highest standards

If the product does not perform as described on this datasheet, we will offer a refund or replacement. For full details of the Abpromise, please visit <https://www.abcam.co.jp/abpromise> or contact our technical team.

## Terms and conditions

---

- Guarantee only valid for products bought direct from Abcam or one of our authorized distributors