

Anti-PARP4 antibody [P193-10] ab24110

3 References [画像数 1](#)

製品の概要

製品名	Anti-PARP4 antibody [P193-10]
製品の詳細	Mouse monoclonal [P193-10] to PARP4
由来種	Mouse
アプリケーション	適用あり: IHC-P, IHC-FoFr
種交差性	交差種: Human
免疫原	Synthetic peptide, corresponding to amino acids 408-611 of Human PARP4.
ポジティブ・コントロール	IHC-P: FFPE human kidney tissue sections.
特記事項	<p>The Life Science industry has been in the grips of a reproducibility crisis for a number of years. Abcam is leading the way in addressing this with our range of recombinant monoclonal antibodies and knockout edited cell lines for gold-standard validation. Please check that this product meets your needs before purchasing.</p> <p>If you have any questions, special requirements or concerns, please send us an inquiry and/or contact our Support team ahead of purchase. Recommended alternatives for this product can be found below, along with publications, customer reviews and Q&As</p>

製品の特性

製品の状態	Liquid
保存方法	Shipped at 4°C. Store at +4°C short term (1-2 weeks). Upon delivery aliquot. Store at -20°C long term.
バッファー	<p>pH: 7.3</p> <p>Preservative: 0.1% Sodium azide</p> <p>Constituent: 1% BSA</p>
ポリモノ	モノクローナル
クローン名	P193-10
アイソタイプ	IgG2b
軽鎖の種類	kappa

アプリケーション

The Abpromise guarantee Abpromise保証は、 次のテスト済みアプリケーションにおけるab24110の使用に適用されます
アプリケーションノートには、推奨の開始希釈率がありますが、適切な希釈率につきましてはご検討ください。

アプリケーション	Abreviews	特記事項
IHC-P		
IHC-FoFr		

追加情報

Flow Cyt: Use at an assay dependent dilution.
IHC-F: 1/10 - 1/20.
IHC-Fr: 1/10 - 1/20.
IHC-P: Use at an assay dependent dilution.
WB: Use at an assay dependent dilution. preferably with ECL
Predicted molecular weight: 193 kDa.

Not tested in other applications.
Optimal dilutions/concentrations should be determined by the end user.

ターゲット情報

組織特異性

Widely expressed; the highest levels are in the kidney; also detected in heart, placenta, lung, liver, skeletal muscle, spleen, leukocytes and pancreas.

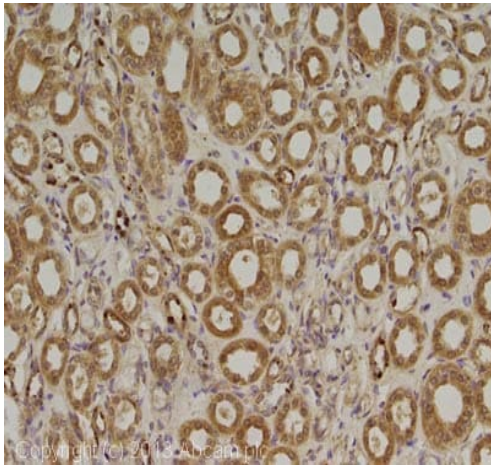
配列類似性

Contains 1 BRCT domain.
Contains 1 PARP alpha-helical domain.
Contains 1 PARP catalytic domain.
Contains 1 VIT domain.
Contains 1 VWFA domain.

細胞内局在

Cytoplasm. Nucleus. Cytoplasm, cytoskeleton, spindle. Also found in the nucleus, associated with mitotic spindles.

画像



Immunohistochemistry (Formalin/PFA-fixed paraffin-embedded sections) - Anti-PARP4 antibody [P193-10] (ab24110)

IHC image of PARP4 staining in human kidney formalin fixed paraffin embedded tissue section, performed on a Leica Bond system using the standard protocol F. The section was pre-treated using heat mediated antigen retrieval with sodium citrate buffer (pH6, epitope retrieval solution 1) for 20 mins. The section was then incubated with ab24110, 10µg/ml, for 15 mins at room temperature and detected using an HRP conjugated compact polymer system. DAB was used as the chromogen. The section was then counterstained with haematoxylin and mounted with DPX.

For other IHC staining systems (automated and non-automated) customers should optimize variable parameters such as antigen retrieval conditions, primary antibody concentration and antibody incubation times.

Please note: All products are "FOR RESEARCH USE ONLY. NOT FOR USE IN DIAGNOSTIC PROCEDURES"

Our Abpromise to you: Quality guaranteed and expert technical support

- Replacement or refund for products not performing as stated on the datasheet
- Valid for 12 months from date of delivery
- Response to your inquiry within 24 hours
- We provide support in Chinese, English, French, German, Japanese and Spanish
- Extensive multi-media technical resources to help you
- We investigate all quality concerns to ensure our products perform to the highest standards

If the product does not perform as described on this datasheet, we will offer a refund or replacement. For full details of the Abpromise, please visit <https://www.abcam.co.jp/abpromise> or contact our technical team.

Terms and conditions

- Guarantee only valid for products bought direct from Abcam or one of our authorized distributors