

### Anti-PARP1 antibody ab227244

★★★★★ [6 Abreviews](#) [35 References](#) [画像数 10](#)

#### 製品の概要

---

製品名	Anti-PARP1 antibody
製品の詳細	Rabbit polyclonal to PARP1
由来種	Rabbit
アプリケーション	<b>適用あり:</b> ChIP, IHC-P, WB, ICC/IF, IP
種交差性	<b>交差種:</b> Mouse, Rat, Human
免疫原	Recombinant fragment within Human PARP1 (internal sequence). The exact sequence is proprietary. Database link: <a href="#">P09874</a>
ポジティブ・コントロール	WB: HEK-293T, NIH/3T3 and PC-12 whole cell extracts; HCT 116, HEK-293T, A431, HeLa and HepG2 whole cell lysate ( <a href="#">ab7900</a> ). ICC/IF: HeLa cells. ChIP: HeLa and Raji chromatin extracts. IP: HCT 116 whole cell extract. IHC-P: HeLa xenograft tissue.
特記事項	<p>The Life Science industry has been in the grips of a reproducibility crisis for a number of years. Abcam is leading the way in addressing this with our range of recombinant monoclonal antibodies and knockout edited cell lines for gold-standard validation. Please check that this product meets your needs before purchasing.</p> <p>If you have any questions, special requirements or concerns, please send us an inquiry and/or contact our Support team ahead of purchase. Recommended alternatives for this product can be found below, along with publications, customer reviews and Q&amp;As</p>

#### 製品の特性

---

製品の状態	Liquid
保存方法	Shipped at 4°C. Store at +4°C short term (1-2 weeks). Upon delivery aliquot. Store at -20°C long term. Avoid freeze / thaw cycle.
バッファー	pH: 7.00 Preservative: 0.025% Proclin 300 Constituents: 78% PBS, 1% BSA, 20% Glycerol (glycerin, glycerine)
精製度	Immunogen affinity purified
ポリ/モノ	ポリクローナル
アイソタイプ	IgG

## アプリケーション

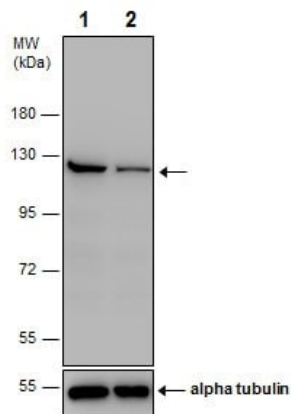
**The Abpromise guarantee** **Abpromise保証は、次のテスト済みアプリケーションにおけるab227244の使用に適用されます**  
アプリケーションノートには、推奨の開始希釈率がありますが、適切な希釈率につきましてはご確認ください。

アプリケーション	Abreviews	特記事項
ChIP		Use at an assay dependent concentration.
IHC-P		1/100 - 1/1000.
WB	★★★★☆ (4)	1/500 - 1/10000. Predicted molecular weight: 113 kDa.
ICC/IF	★★★★★ (1)	1/100 - 1/1000.
IP	★★★★★ (1)	1/100 - 1/500.

## ターゲット情報

機能	Involved in the base excision repair (BER) pathway, by catalyzing the poly(ADP-ribosyl)ation of a limited number of acceptor proteins involved in chromatin architecture and in DNA metabolism. This modification follows DNA damages and appears as an obligatory step in a detection/signaling pathway leading to the reparation of DNA strand breaks. Mediates the poly(ADP-ribosyl)ation of APLF and CHFR. Positively regulates the transcription of MTUS1 and negatively regulates the transcription of MTUS2/TIP150.
配列類似性	Contains 1 BRCT domain. Contains 1 PARP alpha-helical domain. Contains 1 PARP catalytic domain. Contains 2 PARP-type zinc fingers.
翻訳後修飾	Phosphorylated by PRKDC. Phosphorylated upon DNA damage, probably by ATM or ATR. Poly-ADP-ribosylated by PARP2. Poly-ADP-ribosylation mediates the recruitment of CHD1L to DNA damage sites. S-nitrosylated, leading to inhibit transcription regulation activity.
細胞内局在	Nucleus.

## 画像



Western blot - Anti-PARP1 antibody (ab227244)

**All lanes :** Anti-PARP1 antibody (ab227244) at 1/5000 dilution

**Lane 1 :** Non-transfected HEK-293T (human epithelial cell line from embryonic kidney transformed with large T antigen) whole cell extract

**Lane 2 :** PARP1 shRNA transfected HEK-293T (human epithelial cell line from embryonic kidney transformed with large T antigen) whole cell extract

Lysates/proteins at 30 µg per lane.

#### Secondary

**All lanes :** HRP-conjugated anti-rabbit IgG

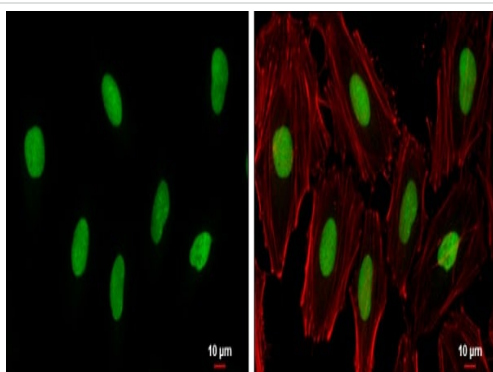
**Predicted band size:** 113 kDa

7.5% SDS-PAGE gel.

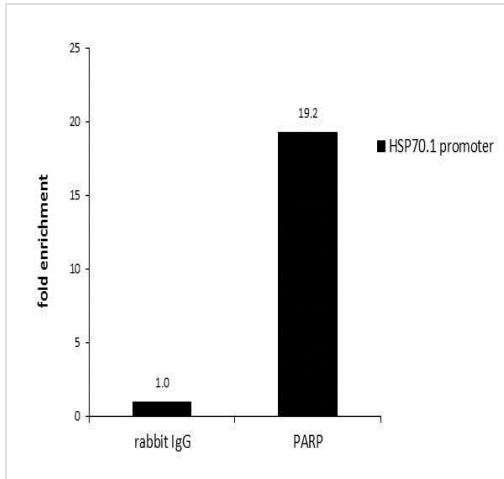
4% paraformaldehyde-fixed HeLa (human epithelial cell line from cervix adenocarcinoma) cells stained for PARP1 (green) using ab227244 at 1/500 dilution in ICC/IF.

Red: Phalloidin, a cytoskeleton marker, at 1/200 dilution.

Blue: Hoechst 33342 staining.

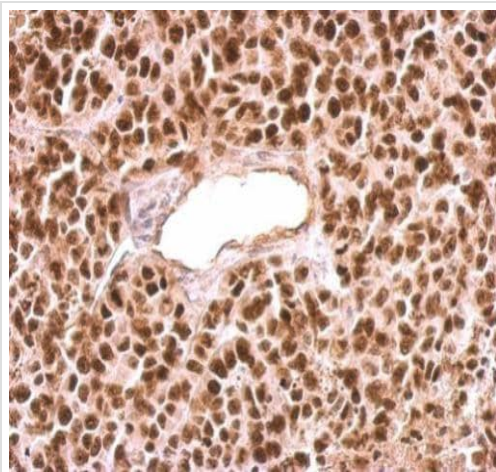


Immunocytochemistry/ Immunofluorescence - Anti-PARP1 antibody (ab227244)



ChIP - Anti-PARP1 antibody (ab227244)

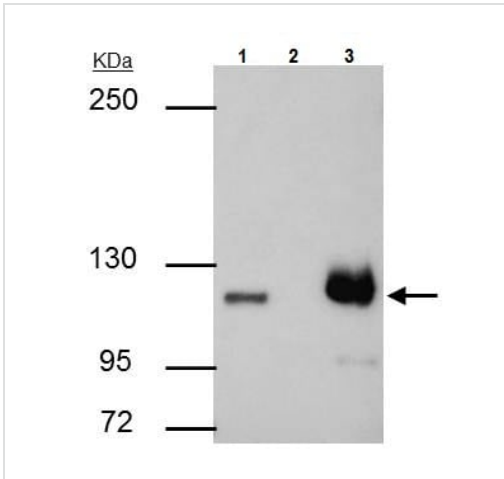
ChIP was performed with HeLa chromatin extract and 5 µg of either normal rabbit IgG or ab227244. The precipitated DNA was detected by PCR with primer set targeting to HSP70.1 promoter.



Immunohistochemistry (Formalin/PFA-fixed paraffin-embedded sections) - Anti-PARP1 antibody (ab227244)

Paraffin-embedded HeLa xenograft tissue stained for PARP1 using ab227244 at 1/500 dilution in immunohistochemical analysis.

Antigen Retrieval: EDTA based, pH 8.0, buffer, 15minutes.



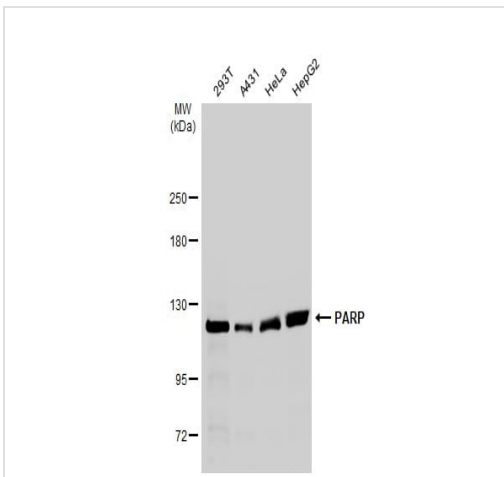
Immunoprecipitation - Anti-PARP1 antibody  
(ab227244)

PARP1 was immunoprecipitated from HCT 116 (human colorectal carcinoma cell line) whole cell extract with 4 µg ab227244. Western blot was performed from the immunoprecipitate using ab227244 at 1/500 dilution. Anti-Rabbit IgG was used as a secondary reagent.

Lane 1: HCT 116 whole cell extract 30 µg.

Lane 2: Control IP in HCT 116 whole cell extract with 4 µg of preimmune Rabbit IgG.

Lane 3: ab227244 IP in HCT 116 whole cell extract.



Western blot - Anti-PARP1 antibody (ab227244)

**All lanes :** Anti-PARP1 antibody (ab227244) at 1/1000 dilution

**Lane 1 :** 293T whole cell extracts

**Lane 2 :** A431 whole cell extracts

**Lane 3 :** HeLa whole cell extracts

**Lane 4 :** HepG2 whole cell extracts

Lysates/proteins at 30 µg per lane.

### Secondary

**All lanes :** Rabbit IgG antibody (HRP) at 1/10000 dilution

**Predicted band size:** 113 kDa

5% gel.

Running conditions: 80V, 15min; 140V, 40 minutes.

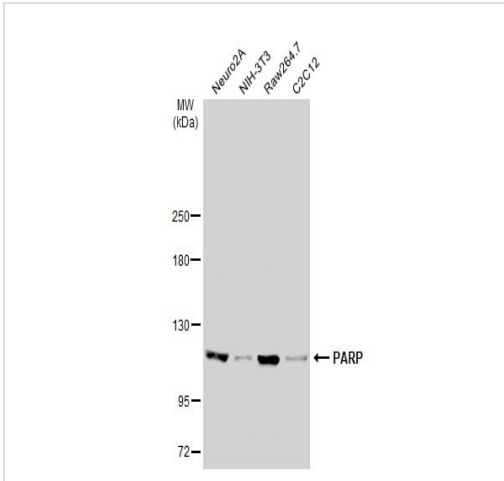
Transfer condition: Semi-dry, 18 V, 60 min (NC membrane).

Blocking condition: 5% non-fat milk in TBST, RT, 60 minutes.

Primary antibody incubation: 4? , overnight.

Washing condition: 5 ml TBST, 4 x 5 minutes.

Exposure: chemiluminescent substrate for the detection of HRP-conjugated antibody



Western blot - Anti-PARP1 antibody (ab227244)

**All lanes :** Anti-PARP1 antibody (ab227244) at 1/1000 dilution

**All lanes :** Neuro2A whole cell extracts

Lysates/proteins at 30 µg per lane.

**Secondary**

**All lanes :** Rabbit IgG antibody (HRP) at 1/10000 dilution

**Predicted band size:** 113 kDa

5% gel.

Running conditions: 80V, 15min; 140V, 40 minutes.

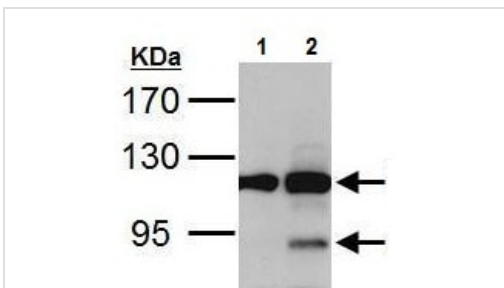
Transfer condition: Semi-dry, 18 V, 60 min (NC membrane).

Blocking condition: 5% non-fat milk in TBST, RT, 60 minutes.

Primary antibody incubation: 4? , overnight.

Washing condition: 5 ml TBST, 4 x 5 minutes.

Exposure: chemiluminescent substrate for the detection of HRP-conjugated antibody



Western blot - Anti-PARP1 antibody (ab227244)

**All lanes :** Anti-PARP1 antibody (ab227244) at 1/5000 dilution

**Lane 1 :** HCT116 whole cell lysate (untreated)

**Lane 2 :** HCT116 whole cell lysate (30 µM cisplatin treatment for 24 hours)

Lysates/proteins at 30 µg per lane.

**Secondary**

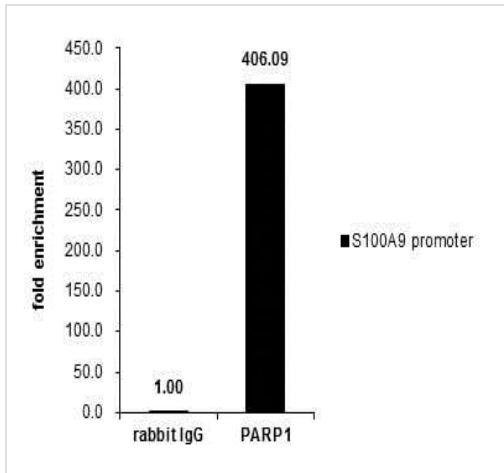
**All lanes :** HRP-conjugated anti-rabbit IgG

**Predicted band size:** 113 kDa

7.5% SDS-PAGE gel.

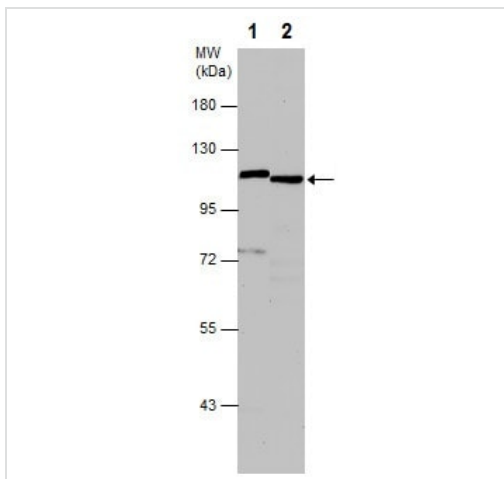
The top band is full-length and the bottom band on lane 2 is cleaved

PARP1.



ChIP - Anti-PARP1 antibody (ab227244)

Cross-linked ChIP was performed with Raji chromatin extract and 5 µg of either control rabbit IgG or ab227244. The precipitated DNA was detected by PCR with primer set targeting to S100A9 promoter.



Western blot - Anti-PARP1 antibody (ab227244)

**All lanes :** Anti-PARP1 antibody (ab227244) at 1/500 dilution

**Lane 1 :** NIH/3T3 (mouse embryo fibroblast cell line) whole cell extract

**Lane 2 :** PC-12 (rat adrenal gland pheochromocytoma cell line) whole cell extract

**Secondary**

**All lanes :** HRP-conjugated anti-rabbit IgG

**Predicted band size:** 113 kDa

7.5% SDS-PAGE gel.

**Please note:** All products are "FOR RESEARCH USE ONLY. NOT FOR USE IN DIAGNOSTIC PROCEDURES"

### Our Abpromise to you: Quality guaranteed and expert technical support

- Replacement or refund for products not performing as stated on the datasheet
- Valid for 12 months from date of delivery
- Response to your inquiry within 24 hours
- We provide support in Chinese, English, French, German, Japanese and Spanish
- Extensive multi-media technical resources to help you
- We investigate all quality concerns to ensure our products perform to the highest standards

If the product does not perform as described on this datasheet, we will offer a refund or replacement. For full details of the Abpromise,

please visit <https://www.abcam.co.jp/abpromise> or contact our technical team.

## **Terms and conditions**

---

- Guarantee only valid for products bought direct from Abcam or one of our authorized distributors