

### Anti-PAP antibody [SP313] ab224802

リコンビナント **RabMAb**

画像数 3

#### 製品の概要

製品名	Anti-PAP antibody [SP313]
製品の詳細	Rabbit monoclonal [SP313] to PAP
由来種	Rabbit
アプリケーション	<b>適用あり:</b> IHC-P, Flow Cyt
種交差性	<b>交差種:</b> Human
免疫原	Synthetic peptide. This information is proprietary to Abcam and/or its suppliers.
ポジティブ・コントロール	Flow Cyt: LNCaP cells. IHC-P: Human prostate adenocarcinoma tissue.
特記事項	<b>This product is FOR RESEARCH USE ONLY. For commercial use, please contact <a href="mailto:partnerships@abcam.com">partnerships@abcam.com</a>.</b>

#### 製品の特性

製品の状態	Liquid
保存方法	Shipped at 4°C. Store at +4°C short term (1-2 weeks). Upon delivery aliquot. Store at -20°C long term. Avoid freeze / thaw cycle.
バッファー	pH: 7.60 Preservative: 0.1% Sodium azide Constituents: PBS, 1% BSA
精製度	Protein A/G purified
特記事項(精製)	Purified from TCS by protein A/G.
ポリ/モノ	モノクローナル
クローン名	SP313
アイソタイプ	IgG

#### アプリケーション

##### The Abpromise guarantee

**Abpromise保証は、次のテスト済みアプリケーションにおけるab224802の使用に適用されます**  
アプリケーションノートには、推奨の開始希釈率がありますが、適切な希釈率につきましてはご検討ください。

アプリケーション	Abreviews	特記事項
IHC-P		1/100. Perform heat mediated antigen retrieval with citrate buffer pH 6 before commencing with IHC staining protocol.
Flow Cyt		1/100.

## ターゲット情報

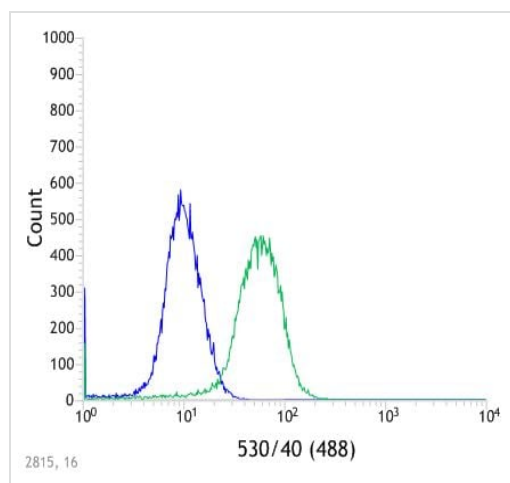
### 配列類似性

Belongs to the histidine acid phosphatase family.

### 細胞内局在

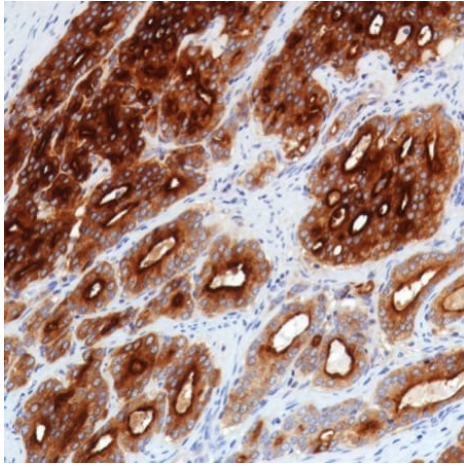
Secreted and Lysosome membrane. Predominantly localized in the plasma membrane but also detected in intracellular vesicles.

## 画像



Flow cytometric analysis of LNCaP (human prostate cancer cell line) cells labeling PAP with ab224802 at 1/100 dilution (green) compared with a rabbit IgG negative control (blue).

Flow Cytometry - Anti-PAP antibody [SP313]  
(ab224802)



Formalin-fixed, paraffin-embedded human prostate adenocarcinoma tissue stained for PAP using ab224802 at 1/100 dilution in immunohistochemical analysis.

Immunohistochemistry (Formalin/PFA-fixed paraffin-embedded sections) - Anti-PAP antibody [SP313] (ab224802)

Why choose a recombinant antibody?



**Research with confidence**  
Consistent and reproducible results



**Long-term and scalable supply**  
Recombinant technology



**Success from the first experiment**  
Confirmed specificity



**Ethical standards compliant**  
Animal-free production

Anti-PAP antibody [SP313] (ab224802)

**Please note:** All products are "FOR RESEARCH USE ONLY. NOT FOR USE IN DIAGNOSTIC PROCEDURES"

### Our Abpromise to you: Quality guaranteed and expert technical support

- Replacement or refund for products not performing as stated on the datasheet
- Valid for 12 months from date of delivery
- Response to your inquiry within 24 hours
- We provide support in Chinese, English, French, German, Japanese and Spanish
- Extensive multi-media technical resources to help you
- We investigate all quality concerns to ensure our products perform to the highest standards

If the product does not perform as described on this datasheet, we will offer a refund or replacement. For full details of the Abpromise, please visit <https://www.abcam.co.jp/abpromise> or contact our technical team.

## Terms and conditions

---

- Guarantee only valid for products bought direct from Abcam or one of our authorized distributors