

Anti-Pancreatic Lipase/PTL antibody [EPR6276] ab124915

リコンビナント RabMAb[®]

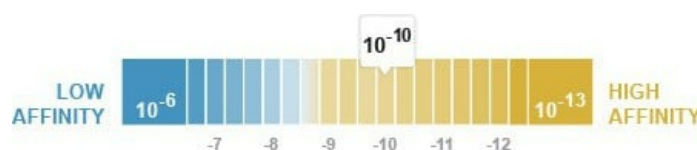
2 References [画像数 4](#)

製品の概要

製品名	Anti-Pancreatic Lipase/PTL antibody [EPR6276]
製品の詳細	Rabbit monoclonal [EPR6276] to Pancreatic Lipase/PTL
由来種	Rabbit
アプリケーション	適用あり: WB, IHC-P 適用なし: IP
種交差性	交差種: Human 非交差種: Mouse, Rat
免疫原	Synthetic peptide within Human Pancreatic Lipase/PTL aa 350-450. The exact sequence is proprietary.
ポジティブ・コントロール	Human pancreas and Human small intestine lysates; Human pancreas tissue.
特記事項	This product is a recombinant monoclonal antibody, which offers several advantages including: <ul style="list-style-type: none"> - High batch-to-batch consistency and reproducibility - Improved sensitivity and specificity - Long-term security of supply - Animal-free production For more information see here . Our RabMAb [®] technology is a patented hybridoma-based technology for making rabbit monoclonal antibodies. For details on our patents, please refer to RabMAb[®] patents .

製品の特性

製品の状態	Liquid
保存方法	Shipped at 4°C. Store at -20°C. Stable for 12 months at -20°C.
解離定数 (K _D 値)	K _D = 1.40 x 10 ⁻¹⁰ M



[Learn more about K_D](#)

バッファー pH: 7.20

Preservative: 0.05% Sodium azide
Constituents: 40% Glycerol (glycerin, glycerine), 9.85% Tris glycine, 50% Tissue culture supernatant

精製度 Protein A purified
ポリ/モノ モノクローナル
クローン名 EPR6276
アイソタイプ IgG

アプリケーション

The Abpromise guarantee Abpromise保証は、次のテスト済みアプリケーションにおけるab124915の使用に適用されます
アプリケーションノートには、推奨の開始希釈率がありますが、適切な希釈率につきましてはご検討ください。

アプリケーション	Abreviews	特記事項
WB		1/10000 - 1/50000. Detects a band of approximately 49 kDa (predicted molecular weight: 51 kDa).
IHC-P		1/500 - 1/1000. Perform heat mediated antigen retrieval with citrate buffer pH 6 before commencing with IHC staining protocol.

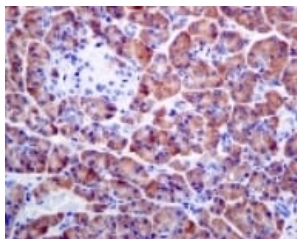
追加情報 Is unsuitable for IP.

ターゲット情報

配列類似性 Belongs to the AB hydrolase superfamily. Lipase family.
Contains 1 PLAT domain.

細胞内局在 Secreted.

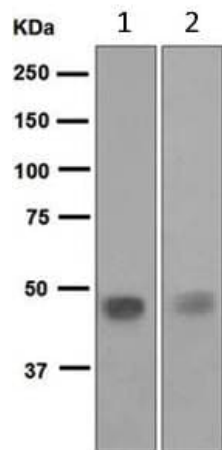
画像



ab124915, at 1/500 dilution, staining Pancreatic Lipase/PTL in paraffin embedded Human pancreas tissue by immunohistochemistry.

Perform heat mediated antigen retrieval with citrate buffer pH 6 before commencing with IHC staining protocol.

Immunohistochemistry (Formalin/PFA-fixed paraffin-embedded sections) - Anti-Pancreatic Lipase/PTL antibody [EPR6276] (ab124915)



Western blot - Anti-Pancreatic Lipase/PTL antibody [EPR6276] (ab124915)

All lanes : Anti-Pancreatic Lipase/PTL antibody [EPR6276] (ab124915) at 1/10000 dilution

Lane 1 : Human pancreas lysate

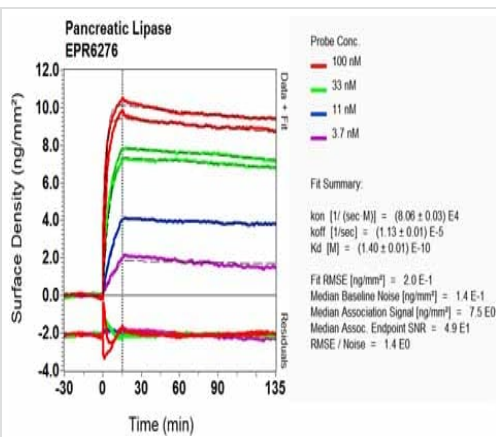
Lane 2 : Human small intestine lysate

Lysates/proteins at 10 µg per lane.

Secondary

All lanes : HRP labelled goat anti-rabbit at 1/2000 dilution

Predicted band size: 51 kDa



SPR Scanning - Anti-Pancreatic Lipase/PTL antibody [EPR6276] (ab124915)

Equilibrium dissociation constant (K_D)

Learn more about K_D

[Click here to learn more about \$K_D\$](#)

Why choose a recombinant antibody?



Research with confidence
Consistent and reproducible results



Long-term and scalable supply
Recombinant technology



Success from the first experiment
Confirmed specificity



Ethical standards compliant
Animal-free production

Anti-Pancreatic Lipase/PTL antibody [EPR6276]
(ab124915)

Please note: All products are "FOR RESEARCH USE ONLY. NOT FOR USE IN DIAGNOSTIC PROCEDURES"

Our Abpromise to you: Quality guaranteed and expert technical support

- Replacement or refund for products not performing as stated on the datasheet
- Valid for 12 months from date of delivery
- Response to your inquiry within 24 hours
- We provide support in Chinese, English, French, German, Japanese and Spanish
- Extensive multi-media technical resources to help you
- We investigate all quality concerns to ensure our products perform to the highest standards

If the product does not perform as described on this datasheet, we will offer a refund or replacement. For full details of the Abpromise, please visit <https://www.abcam.co.jp/abpromise> or contact our technical team.

Terms and conditions

- Guarantee only valid for products bought direct from Abcam or one of our authorized distributors