

# Anti-pan Keratin antibody [80] ab8068

★★★★★ [12 Abreviews](#) [34 References](#) [画像数 4](#)

### 製品の概要

製品名	Anti-pan Keratin antibody [80]
製品の詳細	Mouse monoclonal [80] to pan Keratin
由来種	Mouse
アプリケーション	<b>適用あり:</b> Flow Cyt, IHC-Fr, IHC-P, WB, ICC/IF
種交差性	<b>交差種:</b> Mouse, Rat, Human
免疫原	Full length native protein (purified) corresponding to Human pan Keratin. Callus cytokeratins isolated from fresh human skin tissue
ポジティブ・コントロール	Human callus or keratinocytes
特記事項	<p>The Life Science industry has been in the grips of a reproducibility crisis for a number of years. Abcam is leading the way in addressing this with our range of recombinant monoclonal antibodies and knockout edited cell lines for gold-standard validation. Please check that this product meets your needs before purchasing.</p> <p>If you have any questions, special requirements or concerns, please send us an inquiry and/or contact our Support team ahead of purchase. Recommended alternatives for this product can be found below, along with publications, customer reviews and Q&amp;As</p>

### 製品の特性

製品の状態	Liquid
保存方法	Shipped at 4°C. Store at +4°C short term (1-2 weeks). Upon delivery aliquot. Store at -20°C or -80°C. Avoid freeze / thaw cycle.
バッファー	pH: 7.3 Preservative: 0.07% Sodium azide Constituent: 1% Fetal calf serum
精製度	Tissue culture supernatant
ポリ/モノ	モノクローナル
クローン名	80
アイソタイプ	IgG1

### アプリケーション

**The Abpromise guarantee**      **Abpromise保証は、次のテスト済みアプリケーションにおけるab8068の使用に適用されます**  
 アプリケーションノートには、推奨の開始希釈率がありますが、適切な希釈率につきましてはご検討ください。

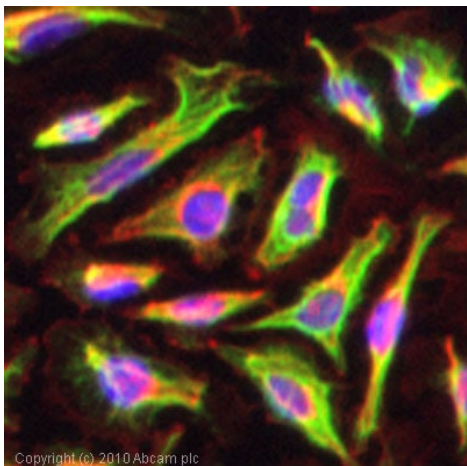
アプリケーション	Abreviews	特記事項
Flow Cyt		1/20. <b>ab170190</b> - Mouse monoclonal IgG1, is suitable for use as an isotype control with this antibody.
IHC-Fr	★★★★★ (2)	Use at an assay dependent concentration. Stains all types of keratin containing cells (epithelia) in frozen sections of various tissues, with the exception of myoepithelial cells.
IHC-P	★★★★★ (3)	Use at an assay dependent concentration. For paraffin embedded tissue a TUF pretreatment is recommended.
WB	★★★★★ (1)	Use at an assay dependent concentration. Detects a band of approximately 65 kDa (predicted molecular weight: 65 kDa).
ICC/IF	★★★★★ (5)	Use a concentration of 1 µg/ml.

#### ターゲット情報

**関連性**      Cytokeratin is a family of basic and acidic proteins, present in dermal tissues. Each cytokeratin is formed by heterotetramers of different types of keratin, that span from 1 to 18. In keratinized epidermis, 50 kD keratin is present in the basal layer, while 56.5 kD keratin is present in suprabasal layers, where as 58 kD keratin is present in the basal and suprabasal layers, while 65 to 67 kD keratin is present in the cells above the basal layers.

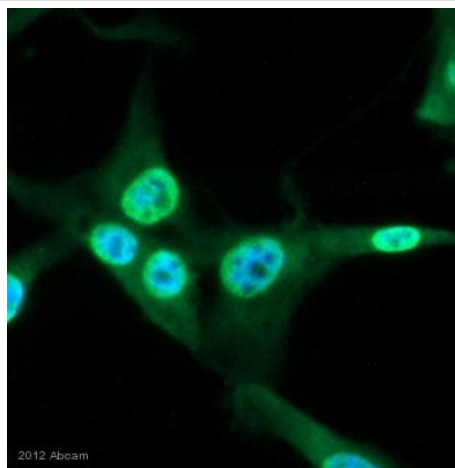
**細胞内局在**      Cytoplasmic

#### 画像



Immunocytochemistry/ Immunofluorescence - Anti-pan Keratin antibody [80] (ab8068)

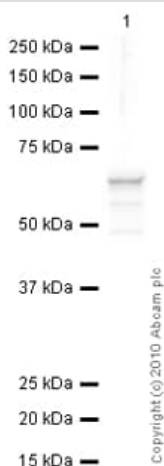
ICC/IF image of ab8068 stained HeLa cells. The cells were 100% methanol fixed (5 min) and then incubated in 1%BSA / 10% normal goat serum / 0.3M glycine in 0.1% PBS-Tween for 1h to permeabilise the cells and block non-specific protein-protein interactions. The cells were then incubated with the antibody (ab8068, 1µg/ml) overnight at +4°C. The secondary antibody (green) was Alexa Fluor® 488 goat anti-mouse IgG (H+L) used at a 1/1000 dilution for 1h. Alexa Fluor® 594 WGA was used to label plasma membranes (red) at a 1/200 dilution for 1h. DAPI was used to stain the cell nuclei (blue) at a concentration of 1.43µM.



Immunocytochemistry/ Immunofluorescence - Anti-pan Keratin antibody [80] (ab8068)

Ab8068 staining pan Keratin in Human glioblastoma cell line by ICC/IF (Immunocytochemistry/Immunofluorescence). The cells were fixed with paraformaldehyde; permeabilized with 0.1% Triton X 100 in PBS and blocked with 0.5% BSA for 30 minutes at room temperature. Samples were incubated with primary antibody (1/50 dilution in 0.5% BSA in PBS) for 16hours at 4°C. An Alexa Fluor® 488 anti-mouse was used as a secondary antibody at 1/400 dilution.

This image is courtesy of an anonymous Abreview



Western blot - Anti-pan Keratin antibody [80] (ab8068)

Anti-pan Keratin antibody [80] (ab8068) at 1/250 dilution + A431 (Human epithelial carcinoma cell line) Whole Cell Lysate at 10 µg

### Secondary

Goat Anti-Mouse IgG H&L (HRP) preadsorbed ([ab97040](#)) at 1/5000 dilution

Developed using the ECL technique.

Performed under reducing conditions.

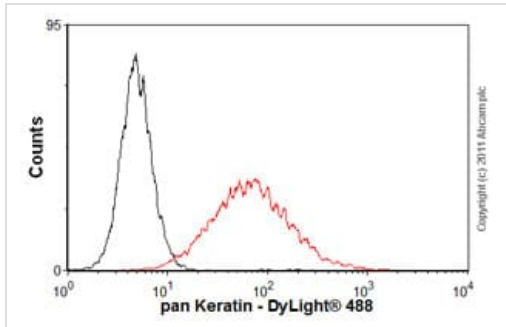
**Predicted band size:** 65 kDa

**Observed band size:** 65 kDa

**Additional bands at:** 49 kDa, 58 kDa. We are unsure as to the

identity of these extra bands.

**Exposure time:** 30 seconds



Flow Cytometry - Anti-pan Keratin antibody [80]  
(ab8068)

Overlay histogram showing A431 cells stained with ab8068 (red line). The cells were fixed with 80% methanol (5 min) and then permeabilized with 0.1% PBS-Triton for 20 min. The cells were then incubated in 1x PBS / 10% normal goat serum / 0.3M glycine to block non-specific protein-protein interactions followed by the antibody (ab8068, 1/20 dilution) for 30 min at 22°C. The secondary antibody used was DyLight® 488 goat anti-mouse IgG (H+L) (**ab96879**) at 1/500 dilution for 30 min at 22°C. Isotype control antibody (black line) was mouse IgG1 [ICIGG1](**ab91353**, 2µg/1x10<sup>6</sup> cells) used under the same conditions. Acquisition of >5,000 events was performed.

**Please note:** All products are "FOR RESEARCH USE ONLY. NOT FOR USE IN DIAGNOSTIC PROCEDURES"

### Our Abpromise to you: Quality guaranteed and expert technical support

---

- Replacement or refund for products not performing as stated on the datasheet
- Valid for 12 months from date of delivery
- Response to your inquiry within 24 hours
- We provide support in Chinese, English, French, German, Japanese and Spanish
- Extensive multi-media technical resources to help you
- We investigate all quality concerns to ensure our products perform to the highest standards

If the product does not perform as described on this datasheet, we will offer a refund or replacement. For full details of the Abpromise, please visit <https://www.abcam.co.jp/abpromise> or contact our technical team.

### Terms and conditions

---

- Guarantee only valid for products bought direct from Abcam or one of our authorized distributors