

Anti-pan Cadherin antibody [EPR1792Y] - Intercellular Junction Marker ab51034

リコンビナント **RabMAb**

★★★★★ **6 Abreviews** **16 References** 画像数 13

製品の概要

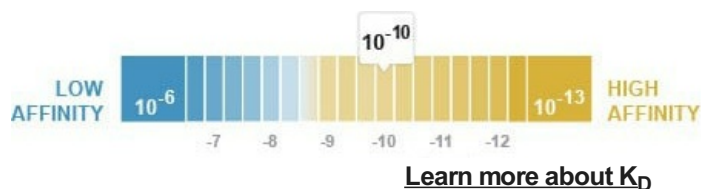
製品名	Anti-pan Cadherin antibody [EPR1792Y] - Intercellular Junction Marker
製品の詳細	Rabbit monoclonal [EPR1792Y] to pan Cadherin - Intercellular Junction Marker
由来種	Rabbit
特異性	The immunogen used for this product shares 100% homology with N-cadherin, 100% homology with R-cadherin, 93% homology to K-cadherin, 93% homology to P-cadherin, 93% homology to E-cadherin, and 73% homology to VE-cadherin. Cross-reactivities with these proteins have not been confirmed experimentally.
アプリケーション	適用あり: Flow Cyt (Intra), WB, IP, IHC-P, ICC/IF
種交差性	交差種: Mouse, Rat, Human
免疫原	Synthetic peptide within Human pan Cadherin (C terminal). The exact sequence is proprietary. Database link: P19022
ポジティブ・コントロール	WB: C6 whole cell lysate. Mouse heart tissue lysate. Human, mouse, and rat brain tissue lysates; ICC: MCF7 cells; IHC-P: Rat, mouse and human cardiac muscle tissue; human and rat colon and mouse testis tissue; IP: Rat heart lysate; Flow Cyt (intra): HeLa cells.
特記事項	<p>This product is a recombinant monoclonal antibody, which offers several advantages including:</p> <ul style="list-style-type: none"> - High batch-to-batch consistency and reproducibility - Improved sensitivity and specificity - Long-term security of supply - Animal-free production <p>For more information see here.</p> <p>Our RabMAb[®] technology is a patented hybridoma-based technology for making rabbit monoclonal antibodies. For details on our patents, please refer to RabMAb[®] patents.</p>

製品の特性

製品の状態	Liquid
保存方法	Shipped at 4°C. Store at +4°C short term (1-2 weeks). Upon delivery aliquot. Store at -20°C. Avoid freeze / thaw cycle.

解離定数 (K_D 値)

K_D = 6.10 x 10⁻¹⁰ M



バッファー

pH: 7.20
Preservative: 0.01% Sodium azide
Constituents: 0.05% BSA, 40% Glycerol, 59% PBS

精製度

Protein A purified

ポリ/モノ

モノクローナル

クローン名

EPR1792Y

アイソタイプ

IgG

アプリケーション

The Abpromise guarantee

Abpromise保証は、次のテスト済みアプリケーションにおけるab51034の使用に適用されます

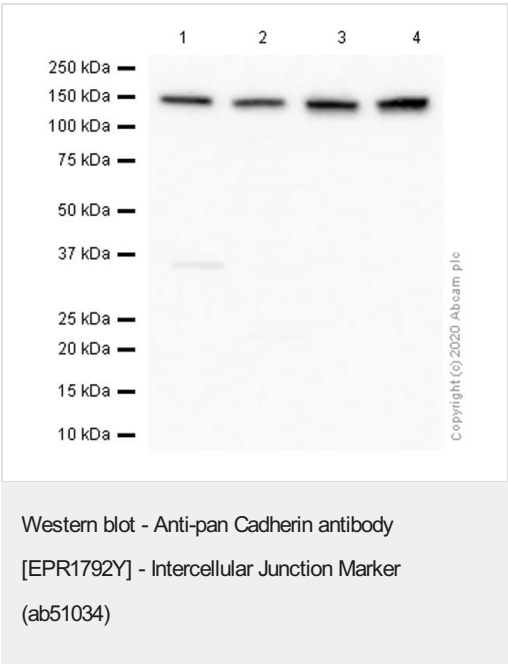
アプリケーションノートには、推奨の開始希釈率がありますが、適切な希釈率につきましてはご検討ください。

アプリケーション	Abreviews	特記事項
Flow Cyt (Intra)		1/20. For unpurified use at 1/30. ab172730 - Rabbit monoclonal IgG, is suitable for use as an isotype control with this antibody.
WB	★★★★★ (1)	1/50000. Detects a band of approximately 140 kDa (predicted molecular weight: 100 kDa).
IP		1/20. For unpurified use at 1/40.
IHC-P	★★★★★ (2)	1/500. Perform heat mediated antigen retrieval before commencing with IHC staining protocol. See <u>IHC antigen retrieval protocols.</u> For unpurified use at 1/100.
ICC/IF	★★★★★ (2)	1/100 - 1/250.

ターゲット情報

関連性

Cadherins are members of a multigene family of single chain glycoprotein receptors mediating calcium dependent cell-cell adhesion. They play an important role in the growth and development of cells via the mechanisms of control of tissue architecture and the maintenance of tissue integrity. Cadherins are expressed in a tissue specific manner and are required for assembly of cells into solid tissue. Individual cadherin molecules are known to co-operate with each other to form a linear cell adhesion zipper. In adhesion junctions cadherins are bound to beta and gamma catenins which in turn bind to alpha catenin, an actin binding protein. Cadherins play an important part in tumor invasion and metastasis.



All lanes : Anti-pan Cadherin antibody [EPR1792Y] - Intercellular Junction Marker (ab51034) at 1/50000 dilution (purified)

Lane 1 : C6 (Rat glial tumor glial cell) whole cell lysate

Lane 2 : Human brain lysate

Lane 3 : Mouse brain lysate

Lane 4 : Rat brain lysate

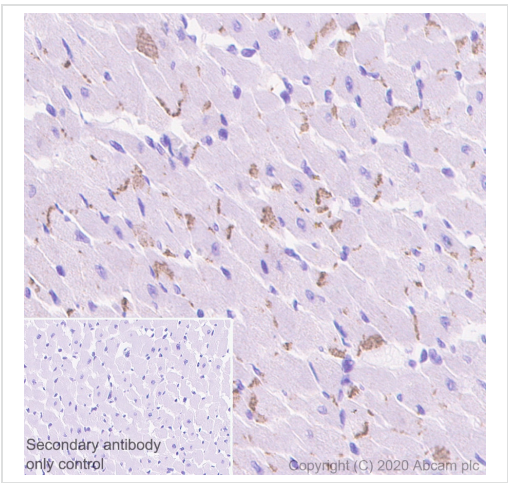
Lysates/proteins at 20 µg per lane.

Secondary

All lanes : Goat Anti-Rabbit IgG (HRP) with minimal cross-reactivity with human IgG at 1/2000 dilution

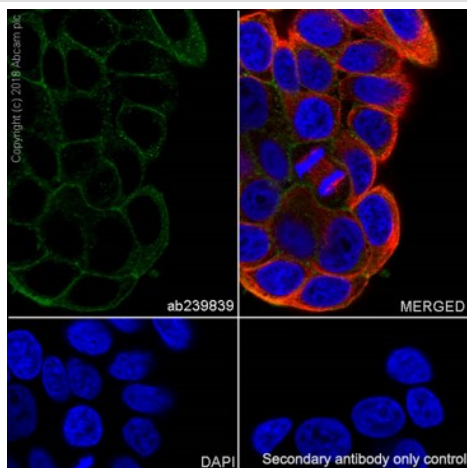
Predicted band size: 100 kDa

Observed band size: 140 kDa



Immunohistochemistry (Formalin/PFA-fixed paraffin-embedded sections) analysis of rat cardiac muscle tissue sections labeling pan Cadherin with purified ab51034 at 1/500 dilution (0.26 µg/mL). Heat mediated antigen retrieval using Bond™ Epitope Retrieval Solution 2 (pH 9.0). Rabbit specific IHC polymer detection kit HRP/DAB ([ab209101](#)) was used as the secondary antibody. Negative control: PBS instead of the primary antibody. Hematoxylin was used as a counterstain.

Immunohistochemistry (Formalin/PFA-fixed paraffin-embedded sections) - Anti-pan Cadherin antibody [EPR1792Y] - Intercellular Junction Marker (ab51034)

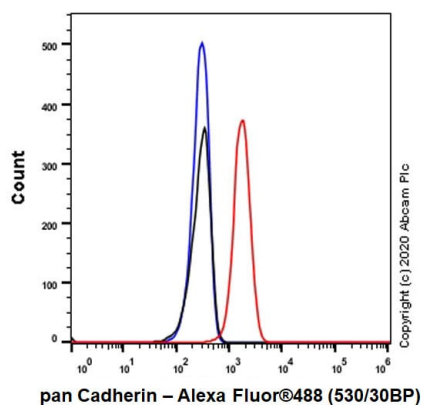


Immunocytochemistry/ Immunofluorescence - Anti-pan Cadherin antibody [EPR1792Y] - Intercellular Junction Marker (ab51034)

Immunocytochemistry/Immunofluorescence analysis of MCF7 (human breast adenocarcinoma epithelial cells labeling pan Cadherin with purified ab51034 at 1/250. Cells were fixed with 4% Paraformaldehyde and permeabilised with 0.1% TritonX-100. **ab150077**, an Alexa Fluor® 488-conjugated goat anti-rabbit IgG (1/1000) was used as the secondary antibody. DAPI (blue) was used as the nuclear counterstain.

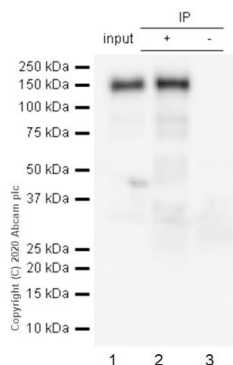
ab195889, Anti-alpha Tubulin antibody [DM1A] - Microtubule Marker (Alexa Fluor® 594) 1/200 was used as counterstain antibody.

Confocal image showing membranous staining in MCF7 cells.



Flow Cytometry (Intracellular) - Anti-pan Cadherin antibody [EPR1792Y] - Intercellular Junction Marker (ab51034)

Intracellular Flow Cytometry analysis of HeLa (Human cervix adenocarcinoma epithelial cell) cells labeling pan Cadherin with purified ab51034 at 1/20 dilution (10µg/mL) (Red). Cells were fixed with 4% Paraformaldehyde and permeabilised with 90% Methanol. A Goat anti rabbit IgG (Alexa Fluor® 488, **ab150077**) secondary antibody was used at 1/2000. Isotype control - Rabbit monoclonal IgG (Black). Unlabeled control - Cell without incubation with primary antibody and secondary antibody (Blue).



Immunoprecipitation - Anti-pan Cadherin antibody
[EPR1792Y] - Intercellular Junction Marker
(ab51034)

Purified ab51034 at 1/20 dilution (0.6 µg) immunoprecipitating pan Cadherin in Rat heart lysate.

Lane 1 (input): Rat heart lysate 10 µg

Lane 2 (+): ab51034 + Rat heart lysate.

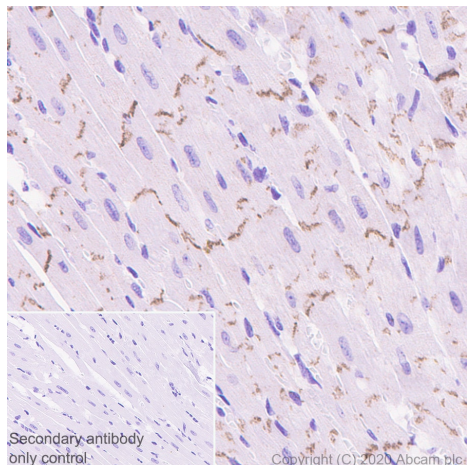
Lane 3 (-): Rabbit monoclonal IgG (**ab172730**) instead of ab51034 in Rat heart lysate.

VeriBlot for IP Detection Reagent (HRP) (**ab131366**) (1/1000 dilution) was used for Western blotting.

Blocking Buffer and concentration: 5% NFDM/TBST.

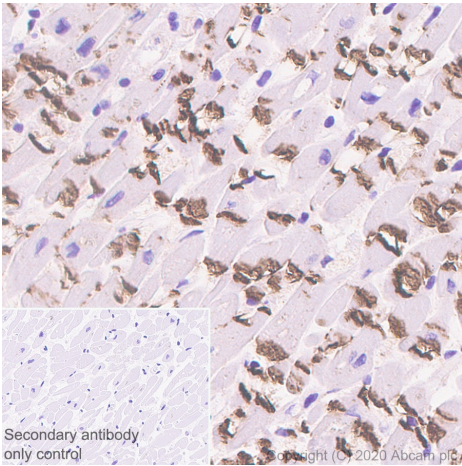
Diluting buffer and concentration: 5% NFDM/TBST.

Observed band size: 140 kDa



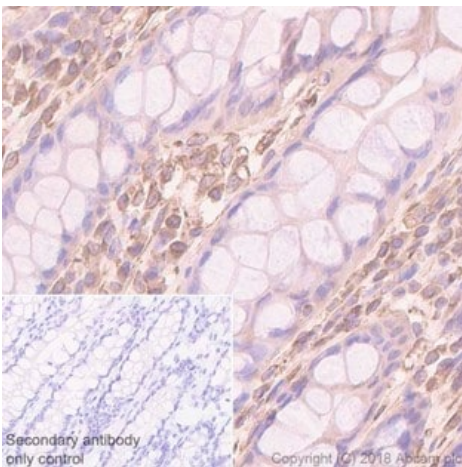
Immunohistochemistry (Formalin/PFA-fixed paraffin-embedded sections) - Anti-pan Cadherin antibody
[EPR1792Y] - Intercellular Junction Marker
(ab51034)

Immunohistochemistry (Formalin/PFA-fixed paraffin-embedded sections) analysis of mouse cardiac muscle tissue sections labeling pan Cadherin with purified ab51034 at 1/500 dilution (0.26 µg/mL). Heat mediated antigen retrieval using Bond™ Epitope Retrieval Solution 2 (pH 9.0). Rabbit specific IHC polymer detection kit HRP/DAB (**ab209101**) was used as the secondary antibody. Negative control: PBS instead of the primary antibody. Hematoxylin was used as a counterstain.



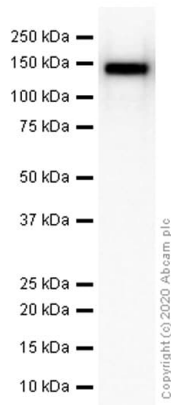
Immunohistochemistry (Formalin/PFA-fixed paraffin-embedded sections) - Anti-pan Cadherin antibody [EPR1792Y] - Intercellular Junction Marker (ab51034)

Immunohistochemistry (Formalin/PFA-fixed paraffin-embedded sections) analysis of human cardiac muscle tissue sections labeling pan Cadherin with purified ab51034 at 1/500 dilution (0.26 µg/mL). Heat mediated antigen retrieval using Bond™ Epitope Retrieval Solution 2 (pH 9.0). Rabbit specific IHC polymer detection kit HRP/DAB (**ab209101**) was used as the secondary antibody. Negative control: PBS instead of the primary antibody. Hematoxylin was used as a counterstain.



Immunohistochemistry (Formalin/PFA-fixed paraffin-embedded sections) - Anti-pan Cadherin antibody [EPR1792Y] - Intercellular Junction Marker (ab51034)

Immunohistochemical analysis of Paraffin-embedded human colon tissue sections labeling pan Cadherin with unpurified ab51034 at 1/100. Goat Anti-Rabbit IgG H&L (HRP) was used as the secondary antibody. Sections were counterstained with Hematoxylin. Antigen retrieval was heat mediated using **ab93684** (Tris/EDTA buffer, pH 9.0). Positive staining on human colon.



Western blot - Anti-pan Cadherin antibody [EPR1792Y] - Intercellular Junction Marker (ab51034)

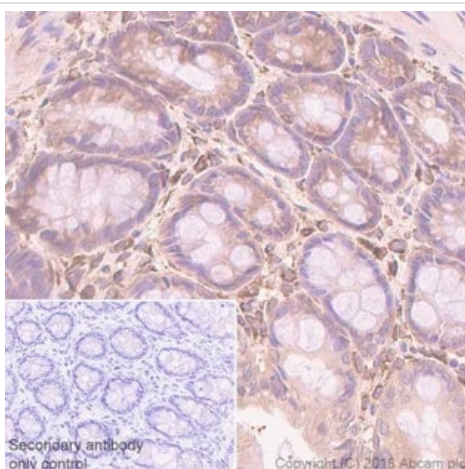
Anti-pan Cadherin antibody [EPR1792Y] - Intercellular Junction Marker (ab51034) at 1/50000 dilution (purified) + Mouse heart lysate at 15 μ g

Secondary

Goat Anti-Rabbit IgG H&L (HRP) ([ab97051](#)) at 1/20000 dilution

Predicted band size: 100 kDa

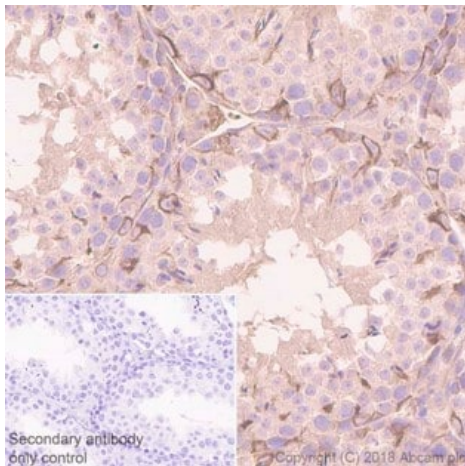
Observed band size: 140 kDa



Immunohistochemistry (Formalin/PFA-fixed paraffin-embedded sections) - Anti-pan Cadherin antibody [EPR1792Y] - Intercellular Junction Marker (ab51034)

Immunohistochemical analysis of Paraffin-embedded rat colon tissue sections labeling pan Cadherin with unpurified ab51034 at 1/100. Goat Anti-Rabbit IgG H&L (HRP) was used as the secondary antibody. Sections were counterstained with Hematoxylin. Antigen retrieval was heat mediated using [ab93684](#) (Tris/EDTA buffer, pH 9.0).

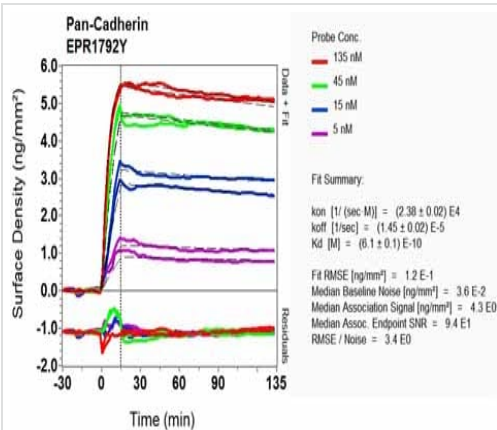
Positive staining on rat colon.



Immunohistochemistry (Formalin/PFA-fixed paraffin-embedded sections) - Anti-pan Cadherin antibody [EPR1792Y] - Intercellular Junction Marker (ab51034)

Immunohistochemical analysis of Paraffin-embedded mouse testis tissue sections labeling pan Cadherin with unpurified ab51034 at 1/100. Goat Anti-Rabbit IgG H&L (HRP) was used as the secondary antibody. Sections were counterstained with Hematoxylin. Antigen retrieval was heat mediated using [ab93684](#) (Tris/EDTA buffer, pH 9.0).

Positive staining on mouse testis.



OIR-D Scanning - Anti-pan Cadherin antibody [EPR1792Y] - Intercellular Junction Marker (ab51034)

Equilibrium disassociation constant (K_D)

Learn more about K_D

[Click here to learn more about \$K_D\$](#)

Why choose a recombinant antibody?



Research with confidence
Consistent and reproducible results



Long-term and scalable supply
Recombinant technology



Success from the first experiment
Confirmed specificity



Ethical standards compliant
Animal-free production

Anti-pan Cadherin antibody [EPR1792Y] -
Intercellular Junction Marker (ab51034)

Please note: All products are "FOR RESEARCH USE ONLY. NOT FOR USE IN DIAGNOSTIC PROCEDURES"

Our Abpromise to you: Quality guaranteed and expert technical support

- Replacement or refund for products not performing as stated on the datasheet
- Valid for 12 months from date of delivery
- Response to your inquiry within 24 hours
- We provide support in Chinese, English, French, German, Japanese and Spanish
- Extensive multi-media technical resources to help you
- We investigate all quality concerns to ensure our products perform to the highest standards

If the product does not perform as described on this datasheet, we will offer a refund or replacement. For full details of the Abpromise, please visit <https://www.abcam.co.jp/abpromise> or contact our technical team.

Terms and conditions

- Guarantee only valid for products bought direct from Abcam or one of our authorized distributors