

# Anti-P70 S6 Kinase (phospho T389) antibody ab2571

★★★★★ **5 Abreviews**   **50 References**   画像数 4

### 製品の概要

製品名	Anti-P70 S6 Kinase (phospho T389) antibody
製品の詳細	Rabbit polyclonal to P70 S6 Kinase (phospho T389)
由来種	Rabbit
特異性	Phospho-p70 S6 Kinase (Thr389/412) Ab detects endogenous levels of p70 S6 Kinase only when phosphorylated at Threonine 389/412
アプリケーション	<b>適用あり:</b> ICC/IF, IHC-P, WB
種交差性	<b>交差種:</b> Mouse, Rat, Human
免疫原	Synthetic peptide corresponding to Human P70 S6 Kinase (phospho T389). Database link: <a href="#">P23443</a>
特記事項	<p>This product is manufactured by BioVision, an Abcam company and was previously called 3505 Phospho-p70 S6 Kinase Antibody. 3505-100 is the same size as the 100 µl size of ab2571.</p> <p>p70 S6 Kinase is a mitogen activated Ser/Thr protein kinase that is required for cell growth and G1 cell cycle progression. P70 S6 Kinase phosphorylates the S6 protein of the 40S ribosomal subunit and is involved in translational control of 5'oligopyrimidine tract mRNAs. A second isoform, p85 S6 Kinase, is derived from the same gene and is identical to p70 S6 Kinase except for 23 extra residues at the N-terminus that encode a nuclear localizing signal.</p>

### 製品の特性

製品の状態	Liquid
保存方法	Shipped at 4°C. Store at +4°C short term (1-2 weeks). Upon delivery aliquot. Store at -20°C. Avoid freeze / thaw cycle.
バッファー	pH: 7.4 Preservative: 0.02% Sodium azide Constituents: 0.877% Sodium chloride, 50% Glycerol (glycerin, glycerine), 49% PBS
精製度	Affinity purified
一次抗体 備考	p70 S6 Kinase is a mitogen activated Ser/Thr protein kinase that is required for cell growth and G1 cell cycle progression. P70 S6 Kinase phosphorylates the S6 protein of the 40S ribosomal subunit and is involved in translational control of 5'oligopyrimidine tract mRNAs. A second isoform, p85 S6 Kinase, is derived from the same gene and is identical to p70 S6 Kinase except for 23 extra residues at the N-terminus that encode a nuclear localizing signal.

ポリ/モノ  
アイソタイプ

ポリクローナル  
IgG

## アプリケーション

**The Abpromise guarantee**      **Abpromise保証は、** 次のテスト済みアプリケーションにおけるab2571の使用に適用されます  
アプリケーションノートには、推奨の開始希釈率がありますが、適切な希釈率につきましてはご確認ください。

アプリケーション	Abreviews	特記事項
ICC/IF		1/100 - 1/500. The optimal conditions should be determined individually.
IHC-P		1/50 - 1/200. Perform heat mediated antigen retrieval with citrate buffer pH 6 before commencing with IHC staining protocol.
WB	★★★★★ (4)	Use a concentration of 1 - 2 µg/ml. This antibody detects bands at approximately 70 and 85 kDa.

## ターゲット情報

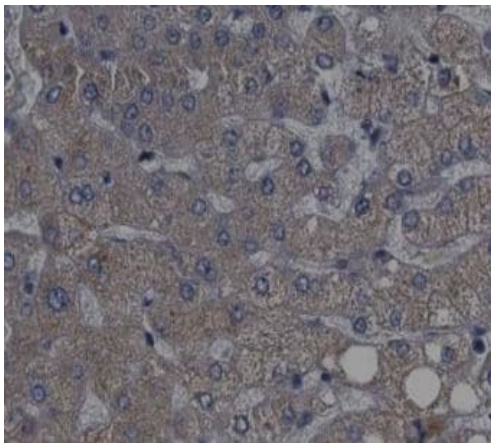
### 関連性

The protein p70 S6 kinase is critical for cell cycle progression and cell survival. In response to mitogen stimulation, p70 S6 kinase activation up-regulates ribosomal biosynthesis and enhances the translational capacity. The p70S6K phosphorylates the S6 protein of the 40S subunit of the ribosome. This kinase was first characterized as an insulin/mitogen-activated protein kinase, whose major known substrate is the 40 S ribosomal subunit protein S6. The p70 S6 kinase is activated by diverse stimuli through a multi-site phosphorylation such as Thr-252 and Ser-434. In Alzheimer's Disease (AD), p70 S6 kinase activation is associated with PHF-tau (hyperphosphorylated tau) accumulation. In non-neuronal cells, p70 S6 kinase have been shown to regulate actin polymerization.

### 細胞内局在

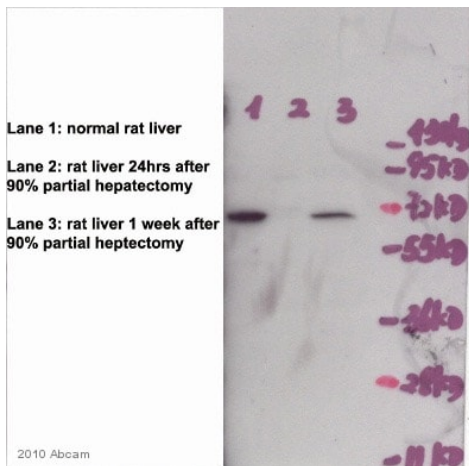
Cell junction › synapse › synaptosome By similarity. Mitochondrion outer membrane. Mitochondrion. Note: Colocalizes with URI1 at mitochondrion. Isoform Alpha I: Nucleus. Cytoplasm Isoform Alpha II: Cytoplasm

## 画像



Immunohistochemistry (Formalin/PFA-fixed paraffin-embedded sections) - Anti-P70 S6 Kinase (phospho T389) antibody (ab2571)

Immunohistochemistry analysis of human liver cancer tissue sections staining Phospho-p70 S6 Kinase using ab2571 at 1/200. The tissue was formaldehyde fixed and a heat mediated antigen retrieval step in citrate buffer was performed. The tissue was then blocked and incubated with the antibody for 1.5 hours at 22°C. An HRP conjugated goat anti-rabbit antibody was used as the secondary antibody.



Western blot - Anti-S6K1 (phospho T389) antibody (ab2571)

This image is courtesy of an anonymous Abreview

**All lanes :** Anti-P70 S6 Kinase (phospho T389) antibody (ab2571) at 1/250 dilution

**Lane 1 :** Normal Rat liver whole tissue lysate.

**Lane 2 :** Rat liver whole tissue lysate 24 hours after 90% partial hepatectomy treated with AEE788 (50 mg/kg).

**Lane 3 :** Rat liver whole tissue lysate 1 week after 90% partial hepatectomy treated with AEE788 (50 mg/kg).

Lysates/proteins at 20 µg per lane.

### Secondary

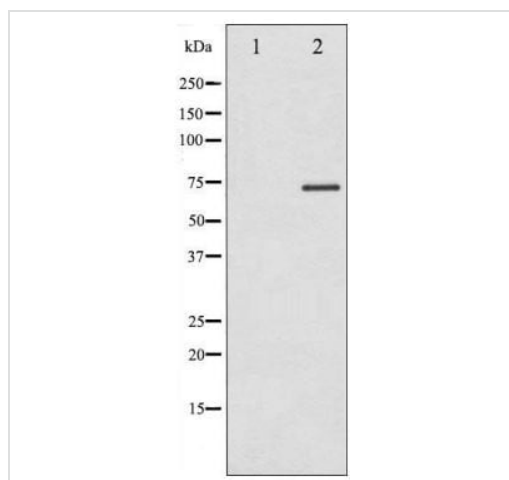
**All lanes :** Goat Anti-Rabbit IgG H&L (HRP) ([ab6721](#)) at 1/5000 dilution

Developed using the ECL technique.

Performed under reducing conditions.

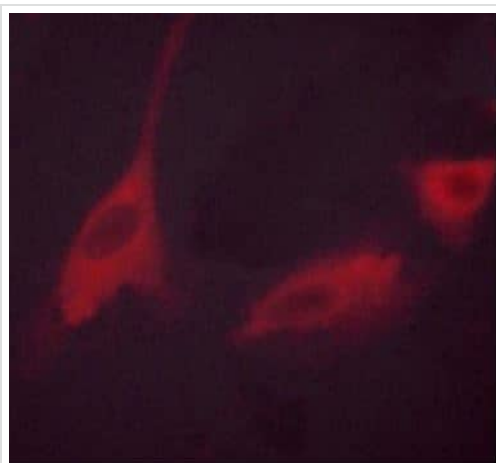
**Observed band size:** 70 kDa

**Blocking Step:** 5% Milk for 1 hour at 25°C.



Western blot - Anti-P70 S6 Kinase (phospho T389) antibody (ab2571)

Western blot analysis of p70 S6 Kinase phosphorylation expression in Insulin treated Jurkat whole cell lysates. The lane on the left is treated with the antigen-specific peptide.



Immunocytochemistry/ Immunofluorescence - Anti-P70 S6 Kinase (phospho T389) antibody (ab2571)

Immunofluorescence analysis of Phospho-p70 S6 Kinase in 293 cells

**Please note:** All products are "FOR RESEARCH USE ONLY. NOT FOR USE IN DIAGNOSTIC PROCEDURES"

#### Our Abpromise to you: Quality guaranteed and expert technical support

- Replacement or refund for products not performing as stated on the datasheet
- Valid for 12 months from date of delivery
- Response to your inquiry within 24 hours
- We provide support in Chinese, English, French, German, Japanese and Spanish

- Extensive multi-media technical resources to help you
- We investigate all quality concerns to ensure our products perform to the highest standards

If the product does not perform as described on this datasheet, we will offer a refund or replacement. For full details of the Abpromise, please visit <https://www.abcam.co.jp/abpromise> or contact our technical team.

#### **Terms and conditions**

---

- Guarantee only valid for products bought direct from Abcam or one of our authorized distributors