




Anti-p40 - DeltaNp63 antibody ab166857

6 References [画像数 1](#)

製品の概要

製品名	Anti-p40 - DeltaNp63 antibody
製品の詳細	Rabbit polyclonal to p40 - DeltaNp63
由来種	Rabbit
特異性	ab166857 recognizes deltaNp63- a p63 isoform
アプリケーション	適用あり: IHC-P
種交差性	交差種: Human 交差が予測される動物種: Mouse, Rat, Cow 
免疫原	Synthetic peptide corresponding to Human p40 - DeltaNp63 aa 5-17. Sequence: ENNAQTQFSEPQY Database link: Q9H3D4 <div>  Run BLAST with  Run BLAST with </div>
ポジティブ・コントロール	Lung squamous cell carcinoma and Prostate tissues.
特記事項	<p>The Life Science industry has been in the grips of a reproducibility crisis for a number of years. Abcam is leading the way in addressing this with our range of recombinant monoclonal antibodies and knockout edited cell lines for gold-standard validation. Please check that this product meets your needs before purchasing.</p> <p>If you have any questions, special requirements or concerns, please send us an inquiry and/or contact our Support team ahead of purchase. Recommended alternatives for this product can be found below, along with publications, customer reviews and Q&As</p>

製品の特性

製品の状態	Liquid
保存方法	Shipped at 4°C. Store at +4°C short term (1-2 weeks). Store at -20°C or -80°C. Avoid freeze / thaw cycle.
バッファー	pH: 7.3 Preservative: 0.05% Sodium azide Constituents: 98% PBS, 1% BSA
精製度	Proprietary Purification

ポリ/モノ
アイソタイプ

ポリクローナル
IgG

アプリケーション

The Abpromise guarantee **Abpromise保証は、次のテスト済みアプリケーションにおけるab166857の使用に適用されます**
アプリケーションノートには、推奨の開始希釈率がありますが、適切な希釈率につきましてはご検討ください。

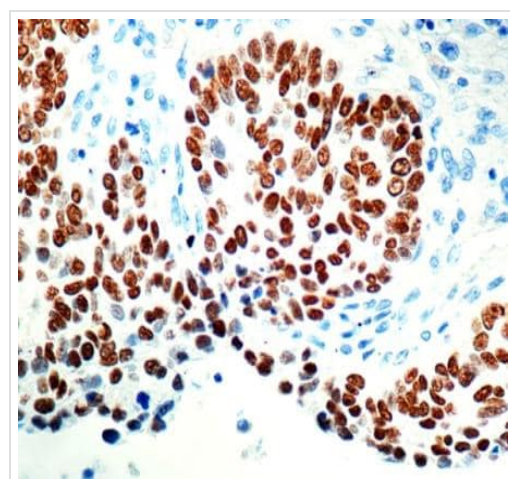
アプリケーション	Abreviews	特記事項
IHC-P		1/50 - 1/200. Perform heat mediated antigen retrieval with citrate buffer pH 6 before commencing with IHC staining protocol.

ターゲット情報

関連性

Differentiating between lung adenocarcinoma and squamous cell carcinoma is an important distinction with therapeutic implications. Although the most frequently recommended squamous marker p63 is extremely sensitive, it suffers from low specificity due to its reactivity in a substantial proportion of lung adenocarcinomas and other tumor types, particularly lymphomas. p40 is a relatively unknown marker that recognizes ?Np63-a p63 isoform suggested to be highly specific for squamous/basal cells. p40 is equivalent to p63 in sensitivity for squamous cell carcinoma, but it is markedly superior to p63 in specificity, which eliminates a potential pitfall of misinterpreting a p63-positive adenocarcinoma or unsuspected lymphoma as squamous cell carcinoma. These findings strongly support the routine use of p40 in place of p63 for the diagnosis of pulmonary squamous cell carcinoma.

画像



Immunohistochemical analysis of formalin-fixed, paraffin-embedded Human Lung squamous Cell Ca, labeling p40 - DeltaNp63 using ab166857 at a 1/50 dilution.

Immunohistochemistry (Formalin/PFA-fixed paraffin-embedded sections) - Anti-p40 - DeltaNp63 antibody (ab166857)

Please note: All products are "FOR RESEARCH USE ONLY. NOT FOR USE IN DIAGNOSTIC PROCEDURES"

Our Abpromise to you: Quality guaranteed and expert technical support

- Replacement or refund for products not performing as stated on the datasheet
- Valid for 12 months from date of delivery
- Response to your inquiry within 24 hours

- We provide support in Chinese, English, French, German, Japanese and Spanish
- Extensive multi-media technical resources to help you
- We investigate all quality concerns to ensure our products perform to the highest standards

If the product does not perform as described on this datasheet, we will offer a refund or replacement. For full details of the Abpromise, please visit <https://www.abcam.co.jp/abpromise> or contact our technical team.

Terms and conditions

- Guarantee only valid for products bought direct from Abcam or one of our authorized distributors