

Anti-p38 (phospho T180 + Y182) antibody [EPR18120] ab195049

リコンビナント **RabMAb**

61 References **画像数 4**

製品の概要

| | |
|--------------|---|
| 製品名 | Anti-p38 (phospho T180 + Y182) antibody [EPR18120] |
| 製品の詳細 | Rabbit monoclonal [EPR18120] to p38 (phospho T180 + Y182) |
| 由来種 | Rabbit |
| アプリケーション | 適用あり: WB, Dot blot |
| 種交差性 | 交差種: Mouse, Human |
| 免疫原 | Synthetic peptide. This information is proprietary to Abcam and/or its suppliers. |
| ポジティブ・コントロール | WB: HEK-293 whole cell lysate treated with UV (60 J/M2) for 60 minutes; NIH/3T3 whole cell lysate treated with UV (60 J/M2) for 60 minutes. |
| 特記事項 | <p>This product is a recombinant monoclonal antibody, which offers several advantages including:</p> <ul style="list-style-type: none"> - High batch-to-batch consistency and reproducibility - Improved sensitivity and specificity - Long-term security of supply - Animal-free production <p>For more information see here.</p> <p>Our RabMAb[®] technology is a patented hybridoma-based technology for making rabbit monoclonal antibodies. For details on our patents, please refer to RabMAb[®] patents.</p> |

製品の特性

| | |
|-------|--|
| 製品の状態 | Liquid |
| 保存方法 | Shipped at 4°C. Store at +4°C short term (1-2 weeks). Upon delivery aliquot. Store at -20°C long term. Avoid freeze / thaw cycle. |
| バッファー | <p>pH: 7.2</p> <p>Preservative: 0.01% Sodium azide</p> <p>Constituents: 59% PBS, 40% Glycerol (glycerin, glycerine), 0.05% BSA</p> |
| 精製度 | Protein A purified |
| ポリ/モノ | モノクローナル |
| クローン名 | EPR18120 |

アプリケーション

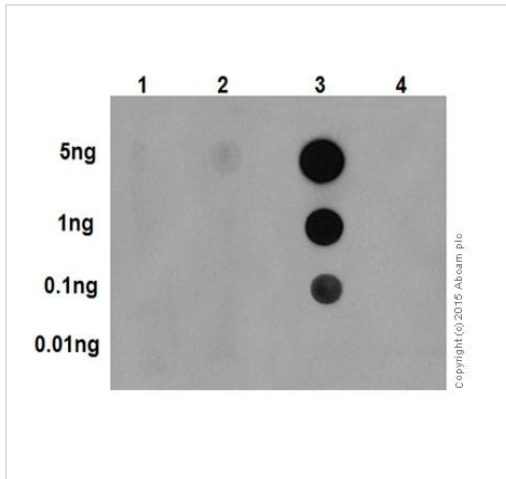
The Abpromise guarantee Abpromise保証は、 次のテスト済みアプリケーションにおけるab195049の使用に適用されます
アプリケーションノートには、推奨の開始希釈率がありますが、適切な希釈率につきましてはご確認ください。

| アプリケーション | Abreviews | 特記事項 |
|----------|-----------|--|
| WB | | 1/1000. Detects a band of approximately 41 kDa (predicted molecular weight: 41 kDa). |
| Dot blot | | 1/1000. |

ターゲット情報

| | |
|-------|--|
| 機能 | Responds to activation by environmental stress, pro-inflammatory cytokines and lipopolysaccharide (LPS) by phosphorylating a number of transcription factors, such as ELK1 and ATF2 and several downstream kinases, such as MAPKAPK2 and MAPKAPK5. Plays a critical role in the production of some cytokines, for example IL-6. May play a role in stabilization of EPO mRNA during hypoxic stress. Isoform Mxi2 activation is stimulated by mitogens and oxidative stress and only poorly phosphorylates ELK1 and ATF2. Isoform Exip may play a role in the early onset of apoptosis. |
| 組織特異性 | Brain, heart, placenta, pancreas and skeletal muscle. Expressed to a lesser extent in lung, liver and kidney. |
| 配列類似性 | Belongs to the protein kinase superfamily. CMGC Ser/Thr protein kinase family. MAP kinase subfamily. Contains 1 protein kinase domain. |
| ドメイン | The TXY motif contains the threonine and tyrosine residues whose phosphorylation activates the MAP kinases. |
| 翻訳後修飾 | Dually phosphorylated on Thr-180 and Tyr-182, which activates the enzyme. Phosphorylated upon DNA damage, probably by ATM or ATR. |
| 細胞内局在 | Cytoplasm. Nucleus. |

画像

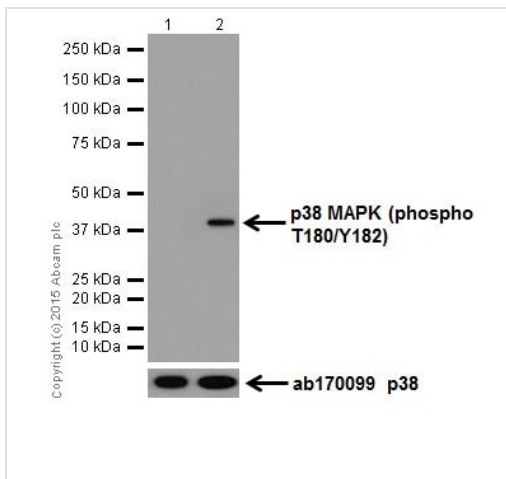


Dot Blot - Anti-p38 (phospho T180 + Y182) antibody
[EPR18120] (ab195049)

Dot blot analysis of p38 (phospho T180) peptide (Lane 1), p38 (phospho Y182) (Lane 2), p38 (phospho T180 + Y182) peptide (Lane 3), and non-phospho peptide (Lane 4), labeled using ab195049 at 1/1000 dilution, followed by Goat Anti-Rabbit IgG, (H+L), Peroxidase conjugated secondary antibody ([ab97051](#)) at 1/1000 dilution.

Blocking/Dilution buffer: 5% NFDm/TBST.

Exposure time: 3 minutes.



Western blot - Anti-p38 (phospho T180 + Y182)
antibody [EPR18120] (ab195049)

All lanes : Anti-p38 (phospho T180 + Y182) antibody [EPR18120] (ab195049) at 1/1000 dilution

Lane 1 : Untreated HEK-293 (Human epithelial cells from embryonic kidney) whole cell lysates

Lane 2 : HEK-293 whole cell lysates treated with UV (60 J/M²) for 60 minutes

Lysates/proteins at 10 µg per lane.

Secondary

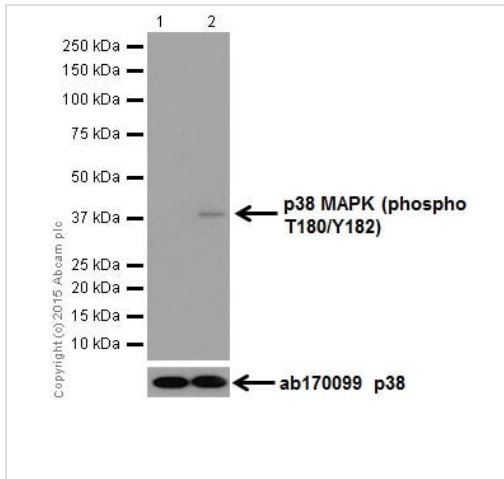
All lanes : Goat Anti-Rabbit IgG H&L (HRP) ([ab97051](#)) at 1/1000 dilution

Predicted band size: 41 kDa

Observed band size: 41 kDa

Exposure time: 3 minutes

Blocking/Dilution buffer: 5% NFDM/TBST.



Western blot - Anti-p38 (phospho T180 + Y182) antibody [EPR18120] (ab195049)

All lanes : Anti-p38 (phospho T180 + Y182) antibody [EPR18120] (ab195049) at 1/1000 dilution

Lane 1 : Untreated NIH/3T3 (Mouse embryo fibroblast cells) whole cell lysate

Lane 2 : NIH/3T3 whole cell lysate treated with UV (60 J/M2) for 60 minutes

Lysates/proteins at 10 µg per lane.

Secondary

All lanes : Goat Anti-Rabbit IgG H&L (HRP) ([ab97051](#)) at 1/1000 dilution





Predicted band size: 41 kDa

Observed band size: 41 kDa

Exposure time: 3 minutes

Blocking/Dilution buffer: 5% NFDM/TBST.

Why choose a recombinant antibody?

| | |
|--|--|
|  <p>Research with confidence Consistent and reproducible results</p> |  <p>Long-term and scalable supply Recombinant technology</p> |
|  <p>Success from the first experiment Confirmed specificity</p> |  <p>Ethical standards compliant Animal-free production</p> |

Anti-p38 (phospho T180 + Y182) antibody
[EPR18120] (ab195049)

Please note: All products are "FOR RESEARCH USE ONLY. NOT FOR USE IN DIAGNOSTIC PROCEDURES"

Our Abpromise to you: Quality guaranteed and expert technical support

-
- Replacement or refund for products not performing as stated on the datasheet
 - Valid for 12 months from date of delivery
 - Response to your inquiry within 24 hours

 - We provide support in Chinese, English, French, German, Japanese and Spanish
 - Extensive multi-media technical resources to help you
 - We investigate all quality concerns to ensure our products perform to the highest standards

If the product does not perform as described on this datasheet, we will offer a refund or replacement. For full details of the Abpromise, please visit <https://www.abcam.co.jp/abpromise> or contact our technical team.

Terms and conditions

- Guarantee only valid for products bought direct from Abcam or one of our authorized distributors