

Anti-p23 antibody ab226295

画像数 5

製品の概要

製品名	Anti-p23 antibody
製品の詳細	Rabbit polyclonal to p23
由来種	Rabbit
アプリケーション	適用あり: WB, IP, IHC-P
種交差性	交差種: Mouse, Human 交差が予測される動物種: Rat, Chicken, Cow, Orangutan 
免疫原	Synthetic peptide within Human p23 aa 110-160. The exact sequence is proprietary. (NP_006592.3). Database link: Q15185
ポジティブ・コントロール	IHC-P: Human lung cancer and ovarian carcinoma tissues. Mouse teratoma tissue. WB: HeLa, HEK-293T, Jurkat, TCMK-1 and NIH/3T3 whole cell lysates. IP: HEK-293T whole cell lysate.
特記事項	<p>The Life Science industry has been in the grips of a reproducibility crisis for a number of years. Abcam is leading the way in addressing this with our range of recombinant monoclonal antibodies and knockout edited cell lines for gold-standard validation. Please check that this product meets your needs before purchasing.</p> <p>If you have any questions, special requirements or concerns, please send us an inquiry and/or contact our Support team ahead of purchase. Recommended alternatives for this product can be found below, along with publications, customer reviews and Q&As</p>

製品の特性

製品の状態	Liquid
保存方法	Shipped at 4°C. Store at +4°C short term (1-2 weeks). Upon delivery aliquot. Store at -20°C long term. Avoid freeze / thaw cycle.
バッファー	pH: 7 Preservative: 0.09% Sodium azide Constituent: Tris citrate/phosphate pH 7 to 8
精製度	Immunogen affinity purified
特記事項 (精製)	ab226295 was affinity purified using an epitope specific to p23 immobilized on solid support.

ポリモノ	ポリクローナル
アイソタイプ	IgG

アプリケーション

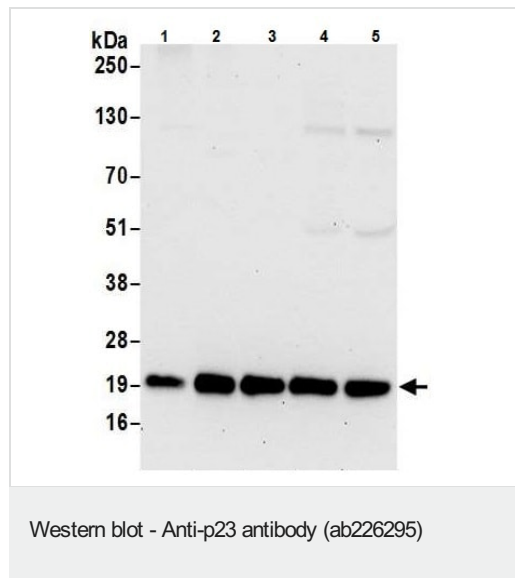
The Abpromise guarantee Abpromise保証は、 次のテスト済みアプリケーションにおけるab226295の使用に適用されます
 アプリケーションノートには、推奨の開始希釈率がありますが、適切な希釈率につきましてはご検討ください。

アプリケーション	Abreviews	特記事項
WB		1/2000 - 1/1000. Predicted molecular weight: 19 kDa.
IP		Use at 2-10 µg/mg of lysate.
IHC-P		1/2000 - 1/10000.

ターゲット情報

機能	Molecular chaperone that localizes to genomic response elements in a hormone-dependent manner and disrupts receptor-mediated transcriptional activation, by promoting disassembly of transcriptional regulatory complexes.
パスウェイ	Lipid metabolism; prostaglandin biosynthesis.
配列類似性	Belongs to the p23/wos2 family. Contains 1 CS domain.
細胞内局在	Cytoplasm.

画像



All lanes : Anti-p23 antibody (ab226295) at 0.1 µg/ml

Lane 1 : HeLa (human epithelial cell line from cervix adenocarcinoma) whole cell lysate

Lane 2 : HEK-293T (human epithelial cell line from embryonic kidney transformed with large T antigen) whole cell lysate

Lane 3 : Jurkat (human T cell leukemia cell line from peripheral blood) whole cell lysate

Lane 4 : TCMK-1 (mouse kidney epithelial cell line) whole cell lysate

Lane 5 : NIH/3T3 (mouse embryo fibroblast cell line) whole cell lysate

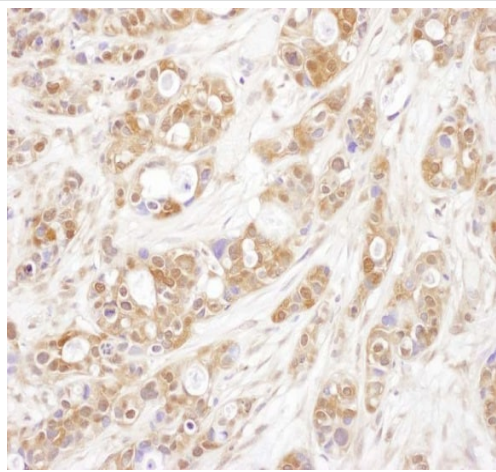
Lysates/proteins at 50 µg per lane.

Developed using the ECL technique.

Predicted band size: 19 kDa

Exposure time: 30 seconds

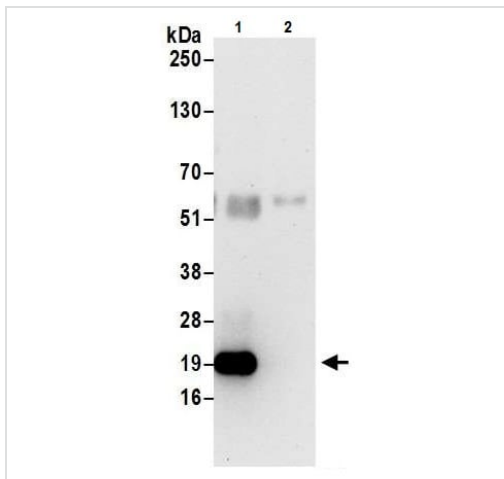
Cells prepared using NETN lysis buffer.



Immunohistochemistry (Formalin/PFA-fixed paraffin-embedded sections) - Anti-p23 antibody (ab226295)

Formalin-fixed, paraffin-embedded human ovarian carcinoma tissue stained for p23 using ab226295 at 1/5000 dilution in immunohistochemical analysis.

Detection: DAB staining.



Immunoprecipitation - Anti-p23 antibody (ab226295)

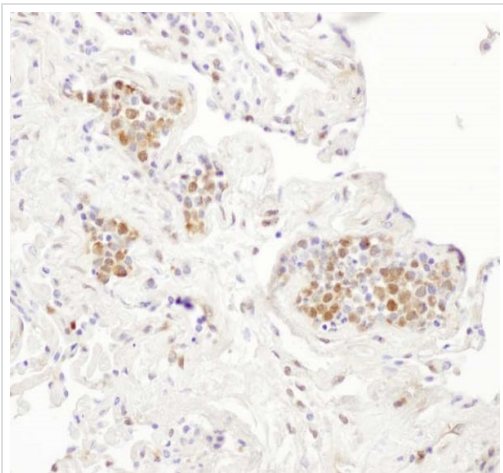
p23 was immunoprecipitated from HEK-293T (human epithelial epithelial cell line from embryonic kidney transformed with large T antigen) whole cell lysate (1 mg for IP, 20% of IP loaded) with ab226295 at 6 µg per reaction. Western blot was performed from the immunoprecipitate using ab226295 at 1 µg/ml.

Lane 1: ab226295 IP in HEK-293T whole cell lysate.

Lane 2: Control IgG IP in HEK-293T whole cell lysate.

Detection: Chemiluminescence with exposure time of 30 seconds.

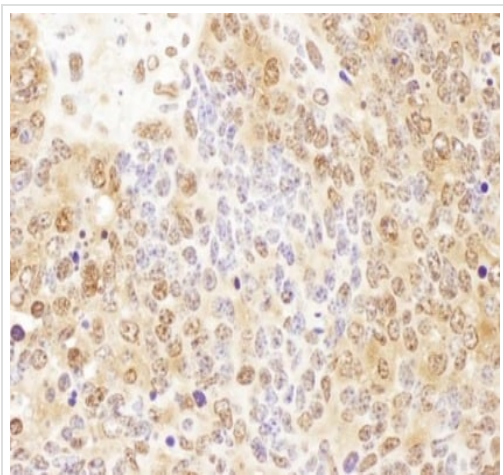
Cells prepared using NETN lysis buffer.



Immunohistochemistry (Formalin/PFA-fixed paraffin-embedded sections) - Anti-p23 antibody (ab226295)

Formalin-fixed, paraffin-embedded human lung cancer tissue stained for p23 using ab226295 at 1/5000 dilution in immunohistochemical analysis.

Detection: DAB staining.



Immunohistochemistry (Formalin/PFA-fixed paraffin-embedded sections) - Anti-p23 antibody (ab226295)

Formalin-fixed, paraffin-embedded mouse teratoma tissue stained for p23 using ab226295 at 1/1000 dilution in immunohistochemical analysis.

Detection: DAB staining.

Please note: All products are "FOR RESEARCH USE ONLY. NOT FOR USE IN DIAGNOSTIC PROCEDURES"

Our Abpromise to you: Quality guaranteed and expert technical support

- Replacement or refund for products not performing as stated on the datasheet
- Valid for 12 months from date of delivery
- Response to your inquiry within 24 hours

- We provide support in Chinese, English, French, German, Japanese and Spanish
- Extensive multi-media technical resources to help you
- We investigate all quality concerns to ensure our products perform to the highest standards

If the product does not perform as described on this datasheet, we will offer a refund or replacement. For full details of the Abpromise, please visit <https://www.abcam.co.jp/abpromise> or contact our technical team.

Terms and conditions

- Guarantee only valid for products bought direct from Abcam or one of our authorized distributors