


### Anti-Otx1 + Otx2 antibody ab21990

★★★★★ [10 Abreviews](#) [73 References](#) [画像数 6](#)

#### 製品の概要

製品名	Anti-Otx1 + Otx2 antibody
製品の詳細	Rabbit polyclonal to Otx1 + Otx2
由来種	Rabbit
特異性	ab21990 is raised against the C-terminal region of the Human Otx2 protein. This product is batch tested in Y79 cell lysate, recombinant Otx1 and overexpressed Otx2. All batches should detect endogenous Otx2, overexpressed Otx2 and recombinant or overexpressed Otx1. From Jan 2024, QC testing of replenishment batches of this polyclonal changed. All tested and expected application and reactive species combinations are still covered by our Abcam product promise. However, we no longer test all applications. For more information on a specific batch, please contact our Scientific Support who will be happy to help.
アプリケーション	<b>適用あり:</b> IHC-Fr, ChIP, IHC-P, ICC/IF, WB, IP
種交差性	<b>交差種:</b> Mouse, Chicken, Cow, Human, Xenopus laevis <b>交差が予測される動物種:</b> Zebrafish 
免疫原	Synthetic peptide corresponding to Human Otx1 + Otx2 aa 250 to the C-terminus (C terminal) conjugated to keyhole limpet haemocyanin. Database link: <a href="#">P32243</a> (Peptide available as <a href="#">ab24347</a> , <a href="#">ab24348</a> )
特記事項	<p>The Life Science industry has been in the grips of a reproducibility crisis for a number of years. Abcam is leading the way in addressing this with our range of recombinant monoclonal antibodies and knockout edited cell lines for gold-standard validation. Please check that this product meets your needs before purchasing.</p> <p>If you have any questions, special requirements or concerns, please send us an inquiry and/or contact our Support team ahead of purchase. Recommended alternatives for this product can be found below, along with publications, customer reviews and Q&amp;As</p>

#### 製品の特性

製品の状態	Liquid
保存方法	Shipped at 4°C. Store at +4°C short term (1-2 weeks). Upon delivery aliquot. Store at -20°C or -80°C. Avoid freeze / thaw cycle.
バッファー	pH: 7.40 Preservative: 0.02% Sodium azide

Constituent: PBS

Batches of this product that have a concentration < 1mg/ml may have BSA added as a stabilising agent. If you would like information about the formulation of a specific lot, please contact our scientific support team who will be happy to help.

#### 精製度

Immunogen affinity purified

#### ポリ/モノ

ポリクローナル

#### アイソタイプ

IgG

#### アプリケーション

**The Abpromise guarantee** Abpromise保証は、次のテスト済みアプリケーションにおけるab21990の使用に適用されます

アプリケーションノートには、推奨の開始希釈率がありますが、適切な希釈率につきましてはご確認ください。

アプリケーション	Abreviews	特記事項
IHC-Fr	★★★★★ (4)	Use at an assay dependent concentration.
ChIP		Use at an assay dependent concentration. PubMed: 18057103
IHC-P	★★★★★ (2)	Use at an assay dependent concentration.
ICC/IF	★★★★★ (2)	Use a concentration of 0.8 - 4 µg/ml.
WB	★★★★★ (2)	Use a concentration of 1 µg/ml. Detects a band of approximately 37 kDa (predicted molecular weight: 31.6 kDa).
IP		Use a concentration of 5 µg/ml.

#### ターゲット情報

##### 関連性

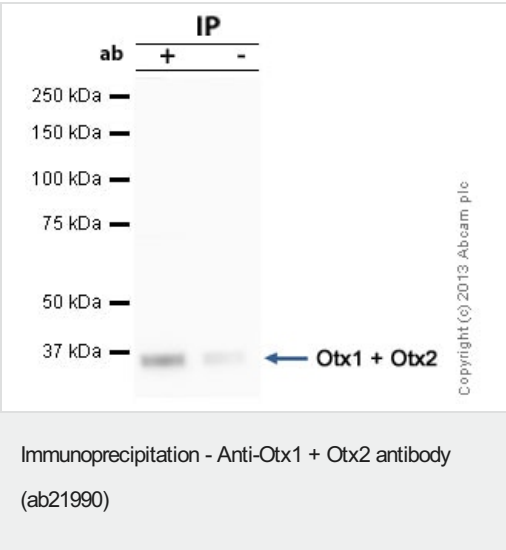
Function: Probably plays a role in the development of the brain and the sense organs. Can bind to the BCD target sequence (BTS): 5'-TCTAATCCC-3'.

Tissue specificity: Expressed in brain.

Disease: Defects in OTX2 are the cause of microphthalmia syndromic type 5 (MCOPS5) [MIM:610125]. Microphthalmia is a clinically heterogeneous disorder of eye formation, ranging from small size of a single eye to complete bilateral absence of ocular tissues. Up to 80% of cases of microphthalmia occur in association with syndromes that include non-ocular abnormalities. MCOPS5 patients manifest unilateral or bilateral microphthalmia/clinical anophthalmia and variable additional features including coloboma, microcornea, cataract, retinal dystrophy, hypoplasia or agenesis of the optic nerve, agenesis of the corpus callosum, developmental delay, joint laxity, hypotonia, and seizures.

Similarity: Belongs to the paired homeobox family. Bicoid subfamily. Contains 1 homeobox DNA-binding domain.

Developmental stage: Embryo.



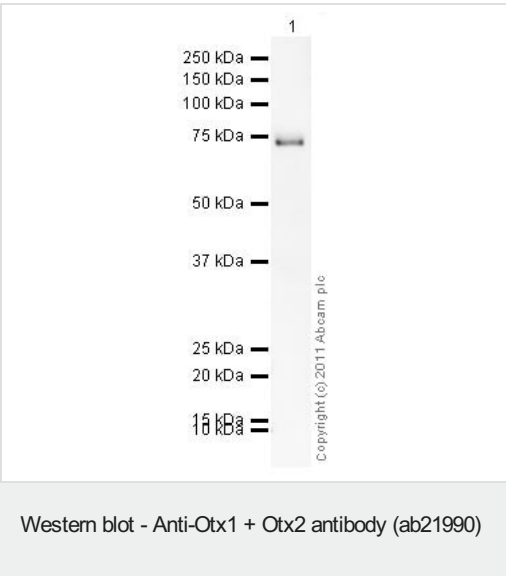
Otx1 +2 was immunoprecipitated using 0.5mg Y79 whole cell extract, 5µg of Rabbit polyclonal to Otx1 +2 and 50µl of protein G magnetic beads (+). No antibody was added to the control (-).

The antibody was incubated under agitation with Protein G beads for 10min, Y79 whole cell extract lysate diluted in RIPA buffer was added to each sample and incubated for a further 10min under agitation.

Proteins were eluted by addition of 40µl SDS loading buffer and incubated for 10min at 70°C; 10µl of each sample was separated on a SDS PAGE gel, transferred to a nitrocellulose membrane, blocked with 5% BSA and probed with ab21990.

Secondary: Mouse monoclonal [SB62a] Secondary Antibody to Rabbit IgG light chain (HRP) ([ab99697](#)).

Band: 37kDa; Otx1 +2, non specific - as present in control (lane 2); 37kDa: We are confident this was due to slight lane contamination and the band seen in the IP lane is our target of interest.



Anti-Otx1 + Otx2 antibody (ab21990) at 1 µg/ml + OTX1 (Human) - Recombinant Protein at 0.1 µg

**Secondary**

Goat Anti-Rabbit IgG H&L (HRP) preadsorbed ([ab97080](#)) at 1/5000 dilution

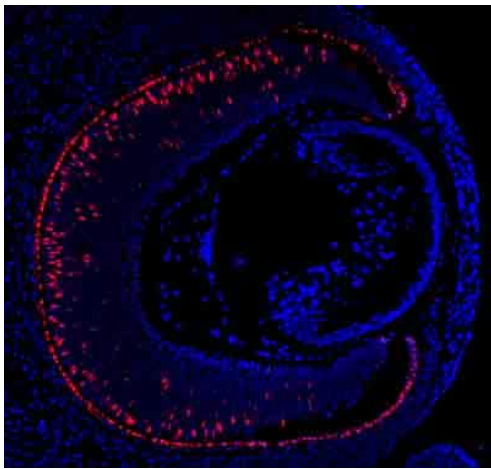
Developed using the ECL technique.

Performed under reducing conditions.

**Predicted band size:** 31.6 kDa

**Observed band size:** 74 kDa

This Otx1 recombinant protein has a GST tag causing it to run at ~74kDa.

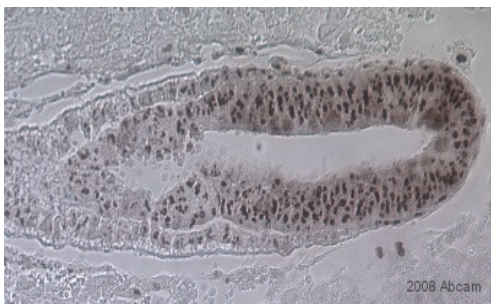


Immunohistochemistry (Formalin/PFA-fixed paraffin-embedded sections) - Anti-Otx1 + Otx2 antibody (ab21990)

This image is courtesy of Erin Bassett

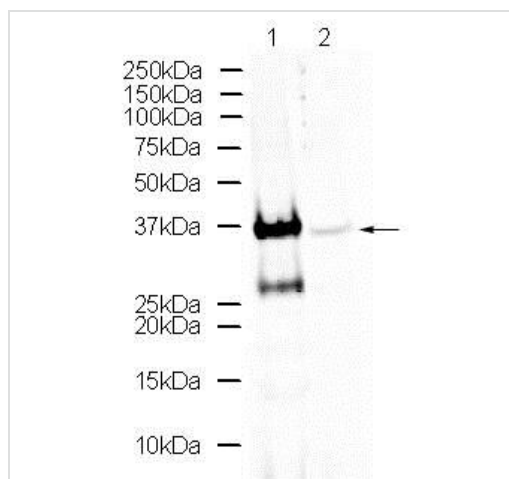
ab21990 staining Otx2 in embryonic day 14.5 (E14.5) mouse eye by Immunohistochemistry (formalin fixed, paraffin embedded sections).

The embryo was fixed in 10% neutral buffered formalin overnight at room temperature, then paraffin-embedded and sectioned at 4µm. Following deparaffinization and antigen retrieval in a rice steamer in 10mM sodium citrate (pH 6.0), the sections were blocked with 5% normal goat serum for half an hour at room temperature. ab21990 was diluted in PBS at 1/100, and incubated overnight at 4°C. The secondary was goat anti-rabbit Alexa<sup>®</sup>568, diluted in PBS with 1.5% normal goat serum. The mounting medium contained the nuclear stain DAPI (blue).



Immunohistochemistry (Formalin/PFA-fixed paraffin-embedded sections) - Anti-Otx1 + Otx2 antibody (ab21990)

Mouse E6 embryos were sectioned and then fixed in paraformaldehyde. Antigen retrieval was performed using citric acid and the sections permeablized and blocked for 1 hour in serum. Embryos were stained with ab21990 (1/2500) diluted in 10% serum, 1% ovalbumin in PBSTween for 14 hours at 4°C. They were then washed and stained with a goat anti-rabbit biotin conjugated antibody. After using a biotinylated secondary, ABC and then DAB was used for color development.



Western blot - Anti-Otx1 + Otx2 antibody (ab21990)

**All lanes :** Anti-Otx1 + Otx2 antibody (ab21990) at 1 µg/ml

**Lane 1 :** Y79 Lysate

**Lane 2 :** Y79 Lysate with Otx2 peptide (**ab24347**) at 1 µg/ml

Lysates/proteins at 20 µg per lane.

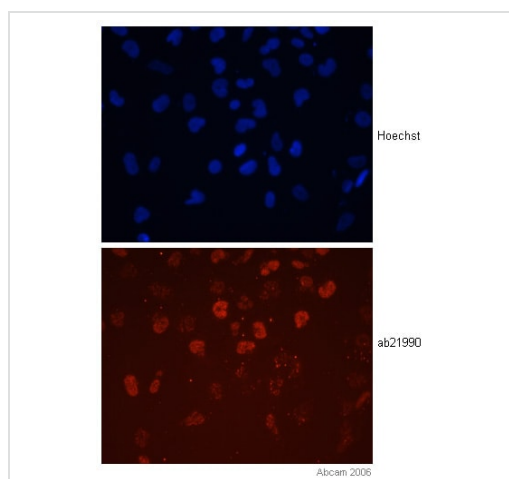
#### Secondary

**All lanes :** Alexa Fluor Goat polyclonal to Rabbit IgG at 1/10000 dilution

**Predicted band size:** 31.6 kDa

**Observed band size:** 37 kDa

**Additional bands at:** 28 kDa (possible cleavage fragment), 28 kDa (possible isoform), 28 kDa (possible non-specific binding)



Immunocytochemistry/ Immunofluorescence - Anti-Otx1 + Otx2 antibody (ab21990)

This image is courtesy of L. Vallier, University of Cambridge

The image shows staining of Otx2 in human embryonic stem cells differentiated into neuroectoderm. As would be expected, staining is nuclear.

**Please note:** All products are "FOR RESEARCH USE ONLY. NOT FOR USE IN DIAGNOSTIC PROCEDURES"

#### Our Abpromise to you: Quality guaranteed and expert technical support

- Replacement or refund for products not performing as stated on the datasheet
- Valid for 12 months from date of delivery
- Response to your inquiry within 24 hours
- We provide support in Chinese, English, French, German, Japanese and Spanish
- Extensive multi-media technical resources to help you
- We investigate all quality concerns to ensure our products perform to the highest standards

If the product does not perform as described on this datasheet, we will offer a refund or replacement. For full details of the Abpromise, please visit <https://www.abcam.co.jp/abpromise> or contact our technical team.

## Terms and conditions

---

- Guarantee only valid for products bought direct from Abcam or one of our authorized distributors